

VALLÉE DE LA  
GASTRONOMIE  
— FRANCE —

# Accommodation

LYON-BEAUJOLAIS-BRESSE  
RHONE VALLEY

G. Reynard/Auvergne-Rhône-Alpes Tourisme

HOTELS 5\*

HOTELS 4\*

HOTELS 3\*

MAPS

## Contacts AUVERGNE RHONE ALPES TOURISME :

### Team European markets:

#### **Benelux-Switzerland :**

Mrs Irène Tronchet

[i.tronchet@auvergnerhonealpes-tourisme.com](mailto:i.tronchet@auvergnerhonealpes-tourisme.com)

#### **UK-Scandinavia-Italia-Spain :**

Mrs Anissa Guenfoud

[a.guenfoud@auvergnerhonealpes-tourisme.com](mailto:a.guenfoud@auvergnerhonealpes-tourisme.com)

### Team Overseas markets:

#### **North & South American – Israël :**

Mrs Corinne Renard

[c.renard@auvergnerhonealpes-tourisme.com](mailto:c.renard@auvergnerhonealpes-tourisme.com)

#### **Japan-Korea-Asia-Middle East :**

Mrs Rachel Grégoris

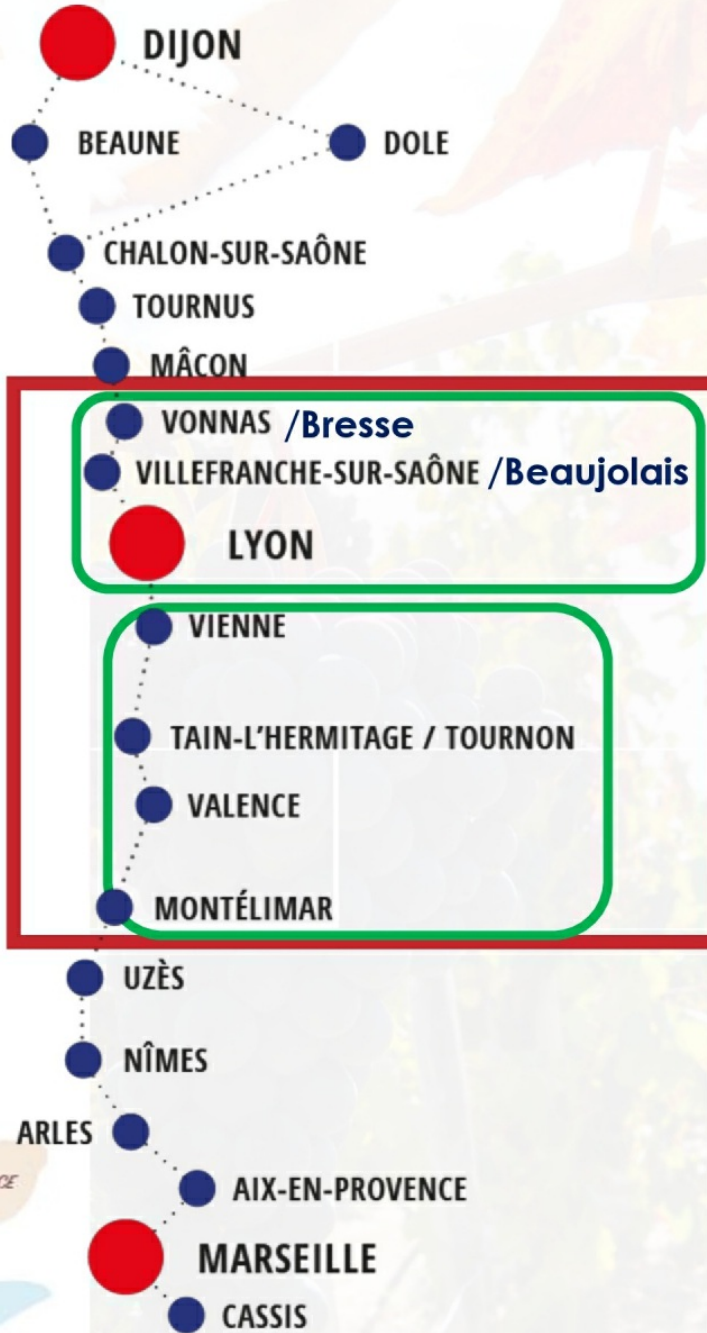
[r.gregoris@auvergnerhonealpes-tourisme.com](mailto:r.gregoris@auvergnerhonealpes-tourisme.com)

#### **India – overseas markets :**

Mrs Barbara Breheret

[b.breheret@auvergnerhonealpes-tourisme.com](mailto:b.breheret@auvergnerhonealpes-tourisme.com)

## CENTER OF VALLEE DE LA GASTRONOMIE: AUVERGNE RHONE ALPE REGION



### AUVERGNE RHONE ALPES REGION: 2 areas

-Area Lyon-Beaujolais-Bresse

-Area Rhône Valley

# Hotels 5\* - Lyon

## BOSCOLO HÔTELS & SPAS

11 quai Jules Courmont - 69002 Lyon 2ème

★★★★★



### Hotel - restaurant

Built towards the end of the 19th century, an hotel of charm and tradition which enjoys a fabulous situation in the city center of Lyon.

### RATES (indication)

Group rate available for > 10 people.

133 rooms, 266 people

@ reservations.lyon@boscolocollecti  
on.com

www boscolocollection.com/lyon/



All year round.

## INTERCONTINENTAL LYON-HOTEL DIEU

20 quai Jules Courmont - 69002 Lyon 2ème

★★★★★



### Hotel - restaurant

Lyon's iconic Grand Hôtel-Dieu, at the heart of the Presqu'île district, is set to become the new home of the contemporary art of living. The InterContinental is a unique, five-star hotel, with 13,237 m<sup>2</sup> of floor space.

### RATES (indication)

Double room: from 320 €  
Double room with breakfast: from 350 €  
Single room: from 290 €  
Suite: 690 €  
Breakfast: 32 €

288 people

+33 (0)4 26 99 23 23

@ lyon@ihg.com

www lyon.intercontinental.com/



All year round.

## COUR DES LOGES

6 rue du Boeuf - 69005 Lyon 5ème

★★★★★



### Hotel - restaurant

Located in the heart of Old Lyon, this striking hotel resembles a city centre palace with decoration that takes you straight back to the Italian Renaissance.

### RATES (indication)

Tax not included.

139 people

+33 (0)4 72 77 44 44

@ contact@courdesloges.com

www.courdesloges.com



## HÔTEL LE ROYAL LYON

20 place Bellecour - 69002 Lyon 2ème

★★★★★



### Hotel - restaurant

In the heart of the city, this hotel is a confidential address for connoisseurs of the art of living, discreet elegance, and naturally generous service.

### RATES (indication)

Double room: from 160 €  
Double room with breakfast: from 200 €  
Single room: from 140 €  
Triple room: from 235 €  
Suite: from 250 €  
Breakfast: 27 €  
Supplementary payment for pets:

135 people

04 72 40 01 00

04 78 37 57 31

@ H2952@accor.com

www.mgallery.com

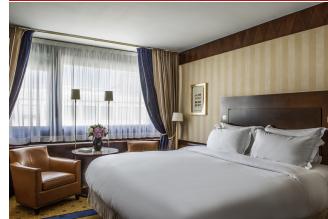


Throughout the year : open daily.

## SOFITEL LYON BELLECOUR

20 quai Gailleton - 69002 Lyon 2ème

★★★★★



### Hotel - restaurant

The Sofitel Lyon Bellecour, situated in the heart of Lyon, offers panoramic views over the city and the Rhône.

### RATES (indication)

Double room: 146 to 550 €.

164 rooms, 328 people

04 72 41 20 00

@ H0553@sofitel.com

sofitel.accor.com/hotel/0553/inde  
x.fr.shtml



All year round.

## LA VILLA FLORENTINE

25 montée Saint Barthélémy - 69005 Lyon 5ème

★★★★★



### Hotel - restaurant

This oasis of calm, situated in the heart of Lyon, majestically overlooks the city from the Fourvière hill. The hotel possesses a superb terrace by the swimming pool and its own treatment rooms.

### RATES (indication)

Suite: 395 to 990 €  
Breakfast: 27 €  
Price per room: 195 to 650 €  
Supplementary payment for pets: 30 €  
Car park: 24 €.

58 people

04 72 69 69 03

@ florentine@relaischateaux.com

www.villaflorentine.com



Open daily.

**VILLA MAÏA**

8 rue Professeur Pierre Marion - 69005 Lyon 5ème

**Hotel**

Admire the Mont Blanc, Lyon at your feet, follow the Saône and the Rhone rivers from the terrace of his room. VILLA MAÏA, located on the hill of Fourvière, combines refinement and intimacy of a house designed and decorated by great architects.

**34 rooms, 74 people**

☎ 04 78 16 01 01

@ contact@villa-maia.fr

🌐 www.villa-maia.com

**RATES (indication)**

Double room: 380 to 390 €

Double room with breakfast: 450 €

Suite: 830 to 840 €

*Open all year round.*

# Hotels 4\* - Lyon

6

## GRAND HÔTEL DES TERREAUX

★★★★

16 rue Lanterne - 69001 Lyon 1er



### Hotel

Ideally located at the heart of Lyon's renowned Unesco World Heritage Site, the Grand Hôtel des Terreaux will captivate you with its charm and décor.

**53 rooms, 100 people**

☎ 04 78 27 04 10

@ ght@hotel-lyon.fr

🌐 www.hotel-lyon-grandhoteldesterreaux.fr

### RATES (indication)

Paying



*Open all year round.*

## GLOBE ET CECIL HÔTEL

★★★★

21 rue Gasparin - 69002 Lyon 2ème



### Hotel

Globe et Cecil Hôtel offers 60 elegant and tasteful guest rooms and a room for your seminars, business breakfasts and conferences.

**104 people**

☎ 04 78 42 58 95

@ reception@hotel-globeetcecil.fr

🌐 www.globeetcecilhotel.com

### RATES (indication)

Single : min. : 148 € - Double : max. : 185 €

Breakfast included.



*All year round.*

## HÔTEL CARLTON LYON BY MALLERY

★★★★

4 rue Jussieu - 69002 Lyon 2ème

### Hotel

This hotel has successfully retained both its unique charm and its authenticity. Located within easy reach of the Opéra and the Museum of Fine Art, you are sure to be won over by Lyon's rich cultural heritage.

**80 rooms, 164 people**

☎ 04 78 42 56 51

@ h2950@accor.com

🌐 www.accorhotels.com/fr/hotel-2950-hotel-carlton-lyon-mgallery-collection/index.shtml

### RATES (indication)

Double room: 165 to 420 €  
Double room with breakfast: 165 to 420 €  
Single room: 165 to 420 €  
Suite: 295 to 550 €  
Breakfast: from 26 €



*Open year round.*

## MAISON NÔ

★★★★

11 rue du Bât-d'Argent - 69001 Lyon 1er



### Hotel - restaurant

Located in a historical building, Maison Nô is a four-star boutique-hotel, with a restaurant, Le Rooftop, offering a panoramic terrace with a stunning view of Lyon.

**45 rooms, 90 people**

☎ 04 81 13 21 90

@ hello@maisonno.com

🌐 www.maisonno.com/

### RATES (indication)

Double room: 140 to 400 €

Double room with breakfast: 154 to 436 €

Breakfast: 18 €.



## HÔTEL ALEXANDRA

★★★★

49 rue Victor Hugo - 69002 Lyon 2ème



### Hotel

Ideally situated in the heart of Lyon's pedestrianised area, this hotel is just a stone's throw from the Place Bellecour. You will love its distinctive charm, and its old-world, refined and authentic style.

**68 people**

☎ 04 78 37 75 79

@ info@hotel-alexandra-lyon.fr

🌐 www.hotel-alexandra-lyon.fr

### RATES (indication)

From 01/01 to 31/12/2021  
Double room: 99 to 329 €  
Double room with breakfast: 119 to 349 €  
Room sleeping 4: 149 to 369 €  
Suite: 189 to 409 €  
Breakfast: from 18 €



*All year round.*

## HÔTEL CHARLEMAGNE LYON

★★★★

23 cours Charlemagne - 69002 Lyon 2ème



### Hotel - restaurant

This hotel, located within easy reach of the new La Confluence centre, combines elegant accommodation with a warm and personalised welcome for both business visitors and tourists.

**117 rooms, 242 people**

☎ 04 72 77 70 00

@ bonjour@le-charlemagne-hotel.com

🌐 www.happyculture.com/fr/hotel-charlemagne.html

### RATES (indication)

Free entry for children < 3 years.  
Group rate available for > 10 people.

Tax: € 2,50/pers/day not included.

Tax not included.



*Open all year round.*

**HÔTEL DE L'ABBAYE**

20 rue de l'Abbaye d'Ainay - 69002 Lyon 2ème

★★★★

**Hotel - restaurant**

On the Presqu'île, in the Ainay district, the 4\* Hôtel de l'Abbaye is an authentic and intimate destination. This boutique hotel has been refurbished, paying special attention to keeping its spirit of days gone by, like a friendly and welcoming family home.

**21 rooms, 52 people**

☎ 04 78 05 60 40

@ contact@hotelabbayelyon.com

🌐 www.hotelabbayelyon.com

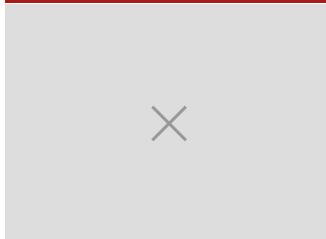
**RATES (indication)**

Double room: from 100 €  
 Double room with breakfast: from 115 €  
 Single room: from 100 €  
 Triple room: from 150 €

*Open all year round.***HÔTEL SILKY BY HAPPYCULTURE**

2 place Francisque Régaud - 69002 Lyon 2ème

★★★★

**Hotel**

Our boutique hotel is ideally located in the heart of Lyon's Presqu'île district, and offers 46 spacious and comfortable standard and superior rooms.

**94 people**

☎ 04 78 37 17 17

@ contact@hotel-silky.com

🌐 www.hotel-silky.com/

**RATES (indication)**

Double room: from 150 €  
 Single room: from 140 €  
 Breakfast: from 12 €  
 Supplementary payment for pets: from 10 €.

Free entry for children < 2 years.  
 Group rate available for > 15

*All year round.***MERCURE LYON CENTRE BEAUX ARTS**

73-75 rue Président E.Herriot - 69002 Lyon 2ème

★★★★

**Hotel**

Located at the beginning of the pedestrianised shopping streets of the Presqu'île district, this charming and distinctive hotel welcomes you in a delightful Art Deco setting.

**152 people**

☎ 04 78 38 09 50

@ H2949@accor.com

🌐 www.accorhotels.com/fr/hotel-2949-hotel-mercure-lyon-centre-beaux-arts/index.shtml

**RATES (indication)**

Paying

*Throughout the year : open daily.***MERCURE LYON CENTRE CHÂTEAU PERRACHE**

12 cours de Verdun Rambaud - Esplanade de la Gare - 69002 Lyon 2ème

★★★★

**Hotel**

This hotel, a listed Art Nouveau historic monument, is located just a few minutes' walk from the Place Bellecour. At Mercure, everything is designed to make your stay a success.

**120 rooms, 287 people**

☎ 04 72 77 15 00

@ H1292@accor.com

🌐 www.mercure.com/fr/hotel-1292-mercure-lyon-centre-chateau-perrache/index.shtml

**RATES (indication)**

Double room: 77 to 188 €

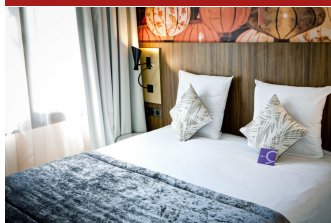
Double room with breakfast: 110 to 223 €

Single room: 88 to 168 €

*All year round.***MERCURE LYON PLAZA RÉPUBLIQUE**

5 rue Stella - 69002 Lyon 2ème

★★★★

**Hotel**

Ideally located for a holiday, for a shopping trip, or for organising your business meetings, the hotel is the ideal venue to sample the pleasures of the city centre and the attractions of Lyon.

**100 people**

☎ 04 78 37 50 50

@ H2951@accor.com

🌐 www.accorhotels.com/fr/hotel-2951-hotel-mercure-lyon-centre-plaza-republique/index.shtml

**RATES (indication)**

Free entry for children < 16 years.  
 Group rate available for > 15 people.

Single - Double : 119 to 240 €

Breakfast : 17,50 €.

*Open all year.***NOVOTEL LYON CONFLUENCE**

3 rue Paul Montrochet - 69002 Lyon 2ème

★★★★

**Hotel - restaurant**

Located near the city centre and Old Lyon, the Novotel Lyon Confluence Hotel boasts 150 latest-generation guest rooms, a restaurant, lounge bar with terrace, meeting rooms, gym and private parking.

**382 people**

☎ 04 37 23 64 00

@ H7325@accor.com

🌐 www.novotel.com/7325

**RATES (indication)**

Double room: 92 to 350 €  
 Double room with breakfast: 92 to 350 €  
 Single room: 92 to 350 €  
 Breakfast: 17.50 €  
 Supplementary payment for pets:

*Throughout the year : open daily.*

**BEST WESTERN CRÉQUI LYON PART-DIEU** ★★★★★

37 rue de Bonnel - 69003 Lyon 3ème

**Hotel**

Located in the heart of the business district and close to the Lyon Part-Dieu TGV station, this hotel offers an oasis of tranquillity with its inner garden.

**98 people**

☎ 04 78 60 20 47

@ infofores@hotel-crequi.com

🌐 www.hotel-crequi.com

**RATES (indication)**

Double room: 89 to 259 €  
 Double room with breakfast: 120 to 290 €  
 Single room: 84 to 244 €  
 Triple room: 104 to 289 €  
 Room sleeping 4: 174 to 389 €  
 Suite: 164 to 369 €  
 Breakfast: 7.50 to 15.50 €

*Reception 24/24.***MERCURE LYON CENTRE SAXE LAFAYETTE** ★★★★★

29 rue de Bonnel - 69003 Lyon 3ème

**Hotel - restaurant**

Perfectly situated in the centre of Lyon, this hotel is perfect for a business trip or a leisurely weekend here in the city. You are sure to fall under the spell of the calm and spacious rooms and the restaurant.

**312 people**

☎ 04 72 61 90 90

@ H2057@accor.com

🌐 www.mercure.com/fr/hotel-2057-mercure-lyon-centre-saxe-lafayette/index.shtml

**RATES (indication)**

Supplementary payment for pets: 12 €  
 Car park: 28 €.

Free entry for children < 16 years.  
 Group rate available for > 8 people.

*Throughout the year : open daily.***MERCURE LYON PART-DIEU** ★★★★★

50 rue de la Villette - 69003 Lyon 3ème

**Hotel - restaurant**

The Mercure Lyon La Part-Dieu is a charming new hotel, located in the heart of Lyon's business district and a stone's throw away from the historic centre of the city.

**247 people**

☎ 04 72 68 25 20

@ h7360@accor.com

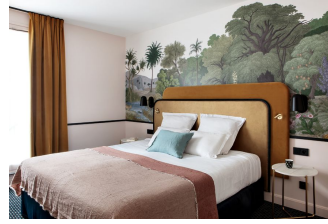
🌐 www.mercure.com/fr/hotel-7360-mercure-lyon-la-part-dieu/index.shtml

**RATES (indication)**

Paying

*Open all year.***BEST WESTERN HÔTEL DU PONT WILSON** ★★★★★

6 rue Mazenod - 69003 Lyon 3ème

**Hotel**

Located between the Place Bellecour and the Part-Dieu business centre, this hotel is the perfect address for your luxurious weekend away, or indeed for your made-to-measure business trip.

**99 people**

☎ 04 78 60 94 94

@ reservation@hotelwilson-lyon.com

🌐 www.hotelwilson-lyon.com

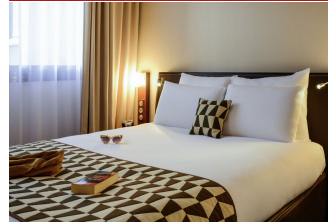
**RATES (indication)**

Free entry for children < 2 years.  
 Group rate available for > 5 people.

Tax not included.

*Open all year.***MERCURE LYON LUMIÈRE** ★★★★★

69 cours Albert Thomas - 69003 Lyon 3ème

**Hotel - restaurant**

Located just ten minutes from the city centre, this hotel boasts cinema themed decor and offers all the modern comforts you could want. Pay a visit to the Institut Lumière and take advantage of the sports club just 500 metres away.

**78 rooms, 156 people**

☎ 04 78 53 76 76

@ H1535@accor.com

🌐 www.mercure.com/fr/hotel-1535-mercure-lyon-lumiere/index.shtml

**RATES (indication)**

Double room: 85 to 350 €  
 Single room: 85 to 350 €  
 Breakfast: 8.50 to 18.90 €  
 Supplementary payment for pets: 12 €  
 Car park: 14 €.

*All year round.***RADISSON BLU HÔTEL LYON** ★★★★★

129 rue Servient - 69003 Lyon 3ème

**Hotel - restaurant**

An unforgettable overview of Lyon in a completely renovated. Located in the heart of the city, the hotel boasts 245 high-tech design rooms and 500 m<sup>2</sup> of panoramic lounges. Free Wi-Fi 1000 Mega.

**490 people**

☎ 04 78 63 55 00

@ info.lyon@radissonblu.com

🌐 www.radissonblu.fr/hotel-lyon

**RATES (indication)**

Double room: from 139 €

Double room with breakfast: from 164 €

Breakfast: from 25 €

*All year round.*



**HOTEL LYON MÉTROPOLE** ★★★★★

85 quai Joseph Gillet - 69004 Lyon 4ème

**Hotel - restaurant**

Located opposite the soothing banks of the Saône River, the Hotel Lyon Métropole offers you a 4-star infrastructure unique in Lyon. 174 rooms, a 2,500 m<sup>2</sup> spa, 12 meeting rooms... The ideal destination for any type of stay!

**174 rooms, 234 people**

☎ 04 72 10 44 44

@ 04 27 01 84 00

🌐 www.lyonmetropole.com

**RATES (indication)**

Double room: 119 to 290 €

Suite: 149 to 320 €

Breakfast: 22 €

*All year round.***FOURVIÈRE HÔTEL** ★★★★★

23 rue Radisson - 69005 Lyon 5ème

**Hotel - restaurant**

Situated on the hillside, Fourvière Hotel offers a unique hotel experience with 75 4-star rooms on 3 floors, combining tradition and modernity in this convent built by Bossan in 1854 and renovated.

**75 rooms, 150 people**

☎ 04 74 700 700

@ contact@fourviere-hotel.com

🌐 www.fourviere-hotel.com/

**RATES (indication)**

Double room: 109 to 310 €

Single room: 109 to 310 €

Suite: 195 to 650 €

Breakfast: 19.90 €

Supplementary payment for pets: 15 €

Car park: 18 €.

*All year round.***CROWNE PLAZA LYON - CITÉ INTERNATIONALE** ★★★★★

22 quai Charles de Gaulle - La Cité Internationale - 69006 Lyon 6ème

**Hotel - restaurant**

Located between the Rhône and the Tête d'Or park, the hotel has been completely renovated in 2019. Its quality of service and its peaceful environment, 10 minutes from the city center, stands out as the reference in terms of 4 stars hotel in the city.

**156 rooms, 312 people**

☎ 04 78 17 86 86

@ contact@cphotel-lyon.com

🌐 www.ihg.com/crowneplaza/hotels/fr/fr/lyon/lyscp/hoteldetail

**RATES (indication)**

Suite: 1,105 €

Breakfast: 23 €

Price per room: 950 to 1,045 €.

Free entry for children &lt; 13 years.

*All year round.  
Reception open 24/24.***COLLÈGE HÔTEL** ★★★★★

5 place Saint-Paul - 69005 Lyon 5ème

**Hotel - restaurant**

For tourism and business stays, the College Hotel is ideally located in the Old Lyon district, listed as a World Heritage site by UNESCO. A place to discover «as Saône as possible» in memory of our dreams!

**40 rooms, 80 people**

☎ 04 72 10 05 05

@ contact@college-hotel.com

🌐 www.college-hotel.com

**RATES (indication)**

Double room: 109 to 209 €

Single room: 109 to 209 €

Breakfast: 18 €

Supplementary payment for pets: 15 €

Car park: 25 €.

*All year round.***BEST WESTERN RICHELIEU LYON PART-DIEU** ★★★★★

25 rue Lalande - 69006 Lyon 6ème

**Hotel**

This entirely renovated hotel is located in the heart of Lyon's business district, and just five minutes' walk from Part-Dieu train station, the lively Brotteaux area, the Cité Internationale and the Centre de Congrès.

**74 people**

☎ 04 78 24 76 45

@ info@hotelrichelieu.com

🌐 www.hotelrichelieu.com

**RATES (indication)**

Double room: from 89 €

Double room with breakfast: from 99 €

Single room: from 79 €

Suite: from 119 €

Breakfast: 15.50 €

*Open all year.***HÔTEL FOCH** ★★★★★

59 avenue Maréchal Foch - 69006 - 69006 Lyon 6ème

**Hotel**

In the heart of the city and close to the Cité Internationale and its Congress Centre, you're sure to appreciate the peace and charm of this small-capacity hotel.

**16 rooms, 32 people**

☎ 04 78 89 14 01

@ accueil@hotel-foch.fr

🌐 www.hotel-foch.fr

**RATES (indication)**

Double room: 90 to 165 €

Twin room: 114 to 185 €

Single room: 75 to 135 €

Triple room: 125 to 210 €

Breakfast: 13 €.

*Front desk open from 7 am to midnight.*

**HÔTEL LE ROOSEVELT**

48 rue de Sèze - 69006 Lyon 6ème

★★★★

**Hotel**

Close to the Part-Dieu district, the congress centre and the Tête d'Or Park, the Roosevelt hotel will seduce you with its authenticity and a warm welcome.

**RATES (indication)**

Free entry for children < 4 years.  
Group rate available for > 20 people.

Special offers during weekend, bank hols and summer.

Tax not included.

**48 rooms, 99 people**

☎ 04 78 52 35 67

@ info@hotel-roosevelt.com

🌐 www.hotel-roosevelt.com

*Open all year.***MERCURE LYON CENTRE BROTTAUX**

114 boulevard des Belges - 69006 Lyon 6ème

★★★★

**Hotel**

Situated in the heart of the vibrant Brotteaux district, the hotel is ideally located in the centre of Lyon. There are many restaurants in the area, from local bouchon bistros to gastronomic

**RATES (indication)**

Double room: 79 to 325 €  
Double room with breakfast: 99 to 365 €  
Single room: 79 to 325 €  
Suite: 115 to 360 €  
Breakfast: 8.50 to 19 €  
Supplementary payment for pets:

**107 people**

☎ 04 78 24 44 68

@ h7236@accor.com

🌐 www.accorhotels.com/gb/hotel-7236-mercure-lyon-centre-brotteaux-hotel/index.shtml

*Open all year.***NOVOTEL LYON GERLAND - MUSÉE DES CONFLUENCES**

70 avenue Leclerc - 69007 Lyon 7ème

★★★★

**Hotel - restaurant**

This hotel, situated close to Lyon city centre, offers a range of spacious and comfortable guest rooms. Whether you stay for business or pleasure, take full advantage of our pool and terrace.

**RATES (indication)**

Free entry for children < 16 years.  
Group rate available for > 7 people.

**186 rooms, 390 people**

☎ 04 72 71 11 11

@ H0736@accor.com

🌐 www.novotel.com/0736

*Open all year.***MARRIOTT LYON CITÉ INTERNATIONALE**

70 quai Charles de Gaulle - 69006 Lyon 6ème

★★★★

**Hotel - restaurant**

Marriott Hotel Lyon has the perfect location. Situated in the heart of Cité Internationale, created by the well-known architect Renzo Piano, between the beautiful park Tête d'Or and the majestic Rhône on the other side. Marriott Hotel Cité Internationale is only 30 min. away from city's airport Saint Exupéry and less than 10 min. away from the main train station, Part-Dieu.

**432 people**

☎ 04 78 17 50 50

@ reservations@marriottlyon.com

🌐 www.marriott.com/lysmc

**RATES (indication)**

Paying

**OKKO HÔTELS LYON PONT LAFAYETTE**

14 bis quai du Général Sarrail - 69006 Lyon 6ème

★★★★

**Hotel**

This hotel opposite Pont Lafayette in the heart of the very chic 6th arrondissement boasts a direct public transport line to Lyon Part-Dieu station. 85 rooms have been created in the former Préfecture, all of which have been professionally restored.

**85 rooms, 170 people**

☎ 04 28 00 02 50

@ lyon6901@okkohotels.com

🌐 lyonlafayette.okkohotels.com/

**RATES (indication)**

Double room with breakfast: 140 €.

Free entry for children < 2 years.

Tax not included.

*Open all year round.*

## CHÂTEAU DE CHAPEAU CORNU



312 rue de la Garenne - 38890 Vignieu



### Hotel - restaurant

Château hotel and Le Capella gastronomic restaurant, located 45 minutes from Lyon, 1 hour from Grenoble, and 90 minutes from Geneva, in the Bourgoin-Jallieu, La Tour du Pin and Morestel triangle.

### 26 rooms, 38 people

☎ 04 74 27 79 00

@ reception@chapeau-cornu.fr

🌐 www.chateau-chapeau-cornu.fr

### RATES (indication)

Double room: 119 to 279 €

Double room with breakfast: 155 to 315 €

Single room: 119 to 279 €

Triple room: 129 to 289 €

Room sleeping 4: 149 to 279 €

Breakfast: 9 to 20 €



*All year round.*

## CHÂTEAU DE BAGNOLS



Le Bourg - 69620 Bagnols



### Hotel - restaurant

Medieval castle of the 13th century, the Château de Bagnols is considered as one of the most beautiful castle hotels in the world.

### RATES (indication)

Double room: 199 to 1,499 € (Rates vary according to period and room category).

### 25 rooms

☎ 04 74 71 40 00

@ info@chateaubagnols.fr

🌐 www.chateaubagnols.com



*From 29/04 to 02/10/2022.  
Open 24 hours a day.*

# Hotels 4\* - Beaujolais

## CHÂTEAU DE PIZAY ★★★★★

443, Route du Château - Hameau de Pizay - Saint-Jean-d'Ardières - 69220 Belleville-en-Beaujolais



### Hotel - restaurant

Hotel, restaurant, spa, and wine shop in the heart of Beaujolais vineyard.

### RATES (indication)

Double room: from 280 €  
Breakfast: 23 €.

Group rate available for > 8 people.

### 62 rooms, 124 people

☎ 04 74 66 51 41

@ reservation@chateau-pizay.com

🌐 www.chateau-pizay.com

From 05/01 to 20/01.

Open 24/24

Annual closure: 2 weeks between Christmas and New Year's Day.



## HÔTEL \*\*\*\* RESTAURANT VILLA ALEXANDRE ★★★★★

165 rue Alexandre Poidebard - 69430 Régnié-Durette



### Hotel - restaurant

For a refined, elegant and friendly stay

### RATES (indication)

Double room: 150 to 260 €  
Single room: 150 to 260 €  
Suite: 200 to 320 €  
Breakfast: 15 to 25 €

Supplementary payment for pets: 20 €.

### 15 rooms, 30 people

☎ 04 81 15 02 30

@ contact@hotelvilla-alexandre.fr

🌐 www.hotelvilla-alexandre.fr/

Tax not included.

From 10/02 to 31/12, every Tuesday, Wednesday, Thursday, Friday, Saturday and Sunday.



## MERCURE VILLEFRANCHE EN BEAUJOLAIS ICI & LA ★★★★★

384 boulevard Louis Blanc - 69400 Villefranche-sur-Saône



### Hotel - restaurant

In the heart of Villefranche-sur-Saône, the capital of Beaujolais, the Mercure Hotel Villefranche en Beaujolais ICI & LA\*\*\*\* welcomes you for your tourist or professional stays.

### RATES (indication)

Double room: 89 to 150 €  
Breakfast: 18 €.

### 78 rooms

☎ 04 37 55 09 09

@ reception@hotelicietla.com

🌐 hotelicietla.com



All year round.

## HÔTEL BESTWESTERN D'EUROPE ET D'ANGLETERRE ★★★★★

92-109 Quai Jean Jaurès - 71000 Mâcon



### Hotel

### RATES (indication)

Double room: 82 to 229 €  
Single room: 82 to 229 €  
Breakfast: 15.50 €.

☎ 03 85 38 27 94

@ info@hotel-europeangleterre-macon.com

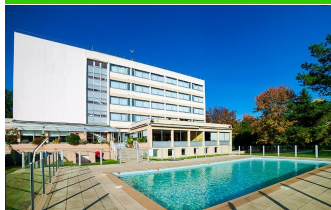
🌐 www.hotel-europeangleterre-macon.com/



All year round.

## HÔTEL MERCURE BORD DE SAÔNE ★★★★★

26 rue Pierre de Coubertin - 71000 Mâcon



### Hotel - restaurant

### RATES (indication)

Double room: 86 to 195 €  
Single room: 86 to 195 €  
Breakfast: 12 €.

☎ 03 85 21 93 93

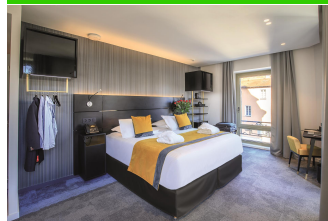
🌐 www.mercure-macon-bord-de-saone.com



All year round.

## PANORAMA 360 HÔTEL & SPA ★★★★★

4 rue Paul Gateaud - 71000 Mâcon



### Hotel

### RATES (indication)

Double room: 69 to 289 €  
Single room: 69 to 289 €  
Breakfast: 15 €.

☎ 03 85 50 20 42

@ contact@hotelmacon-panorama360.com

🌐 www.hotelmacon-panorama360.com/



All year round.

# Hotels 3\* - Beaujolais

## HÔTEL LES PIERRES DORÉES

4 Rue de la Mairie - 69480 Ambérieux

★★★



### Hotel - restaurant

#### RATES (indication)

Group rate available for > 10 people.

#### 22 rooms

☎ 04 74 67 06 76

@ contact@lespierresdorees.com

🌐 www.lespierresdorees.com



From 01/01 to 12/31.

## CHARME EN BEAUJOLAIS

2 avenue de Verdun - Péage A6 - Belleville - 69220 Belleville-en-Beaujolais

★★★



### Hotel - restaurant

Located at the gates of the Beaujolais region, the recently built Hotel Charme offers 40 ground floor rooms in a garden, all fitted with shower and toilet, telephone, television. Delicious traditional food. Free Wi-Fi.

#### 40 rooms

☎ 04 74 69 61 69

@ contact@charme-beaujolais.com

🌐 www.charme-beaujolais.com

#### RATES (indication)

Double room: 70 to 85 €  
Single room: 70 to 85 €  
Breakfast: from 10.70 €.



All year round.

## INTER-HOTEL BELLEVILLE

Z.A. du Pré de la Cloche - Belleville - 69220 Belleville-en-Beaujolais

★★★



### Hotel

Hotel Belleville.com welcomes you with a young and dynamic team, always receptive to your requirements and that provides entire satisfaction for you and your friends.

#### 49 rooms, 111 people

☎ 04 74 66 6747

@ contact@hotel-belleville.com

🌐 www.hotel-belleville.com

#### RATES (indication)

Double room: 68 to 89 €  
Single room: 60 to 80 €  
Breakfast: 9.50 €  
Supplementary payment for pets: 0 €  
Car park: 0 €.



All year round.

## AU BEAUJOLAIS ST JEAN

35 rue du Parc Saint Jean - Saint-Jean-d'Ardières - 69220 Belleville-en-Beaujolais

★★★



### Hotel

#### RATES (indication)

Double room: 85 €  
Triple room: 100 €  
Room sleeping 4: 115 €  
Breakfast: 10 €  
Supplementary payment for pets: 6 €.

#### 44 rooms

☎ 04 74 66 07 80

@ hotelabsj@gmail.com

🌐 www.hotelabsj.com

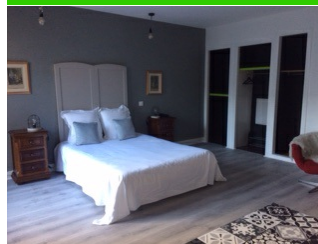


All year round.

## HÔTEL LA ROUTE DES VINS

1 place de la Gare - Belleville - 69220 Belleville-en-Beaujolais

★★★



### Hotel

#### RATES (indication)

Double room: 59 to 95 €  
Half-board: 79 €  
Breakfast: 7 €  
Price per room: 39 to 65 €.

#### 10 rooms, 21 people

☎ 04 74 66 34 68

☎ 06 63 38 03 77

@ laroutedesvins69@orange.fr

🌐 laroutedesvinshotel.fr/

Tax not included.



Throughout the year : open daily.

## HÔTEL & SPA LE SAVIGNY

4 place de Verdun - 69460 Blacé

★★★



### Hotel

Suspend time in the heart of the Beaujolais vineyards... near Villefranche-sur-Saône, in Blacé... The charming 3-star hotel Le Savigny welcomes you in an enchanting setting.



#### 16 rooms, 33 people

☎ 04 74 67 52 07

@ contact@lesavigny.com

🌐 www.lesavigny.com

#### RATES (indication)

Double room: 82 to 130 €  
Suite: 105 to 140 €  
Breakfast: 7 to 11 €  
Supplementary payment for pets: 7 €.



From 03/01 to 30/12/2022  
Opening hours daily.

**HÔTEL-RESTAURANT "LE PAVILLON"** ★★

19 Route de Cours - Cours-la-Ville - 69470 Cours

**Hotel - restaurant****RATES (indication)**

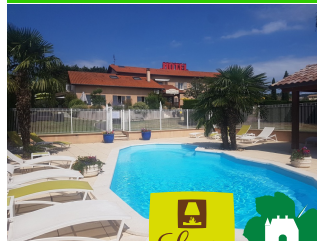
Double room: 72 €  
 Double room with breakfast: 87 €  
 Twin room: 68 €  
 Single room: 50 €  
 Triple room: 79 €  
 Suite: 145 €  
 Half-board: 121 €  
 Full-board: 155 €  
 Breakfast: 9.50 €  
 Group rate half-board/person: 68 €  
 Supplementary payment for pets: 4 €  
 Tourist taxes: 0.80 €.

**32 people**

☎ 04 74 89 83 55  
 @ hotel-pavillon@wanadoo.fr  
 www.hotel-pavillon.com

*Throughout the year : open daily.***HÔTEL DES GRANDS VINS** ★★

304, rue de la Grappe Fleurie - 69820 Fleurie

**Hotel**

We invite you to come and discover the HÔTEL DES GRANDS VINS in the heart of the 'FLEURIE' wine area. We'll welcome you here in a pleasant, friendly setting.

**RATES (indication)**

Double room: 70 to 120 €  
 Breakfast: 3 to 12.50 €.

**20 rooms, 40 people**

☎ 04 74 69 81 43  
 @ contact@hoteldesgrandsvins.com  
 www.hoteldesgrandsvins.com

Group rate available for > 20 people.

Tax not included.

*From 18/02 to 10/12/2022.***LA ROSE** ★★

45 Ancienne Place du Marché - 69840 Juliéнас

**Hotel - restaurant**

Your step at Juliéнас, calm, and greed in the heart of Beaujolais. 11 lovely, comfortable and renovated bedrooms (air-conditioned in summer) + restaurant open 7/7 in the evening. Beautiful summer terrace and Outdoor unheated pool.

**RATES (indication)**

From 09/04 to 21/10/2022  
 Double room: from 139 €  
 Single room: from 96 €

**11 rooms, 32 people**

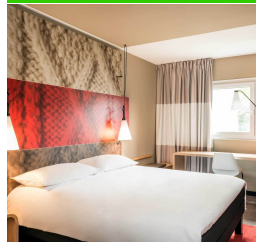
☎ 04 74 04 41 20  
 @ info@chez-la-rose.fr  
 www.chez-la-rose.fr



*From 02/03 to 30/11/2022  
 Opening hours on Wednesday, Thursday, Friday,  
 Saturday and Sunday between 8 am and 10 pm.*

**IBIS HOTEL** ★★

94 allée de Riottier - 69400 Limas

**Hotel - restaurant**

The Ibis Lyon Villefranche-sur-Saône welcomes you to its fully-renovated and modern hotel. Make the most of its location near junction 31.2 on the A6 motorway for a relaxing break in a stunning setting.

**RATES (indication)**

Double room: 77 to 129 €  
 Single room: 77 to 129 €  
 Triple room: 85 to 139 €  
 Suite: 95 to 149 € (Family suite)  
 Breakfast: 10.90 €.

**107 rooms, 214 people**

☎ 04 74 68 22 23  
 @ h0646@accor.com  
 all.accor.com/hotel/0646/index.fr.shtml

*All year round.***CHÂTEAU DES LOGES** ★★

1 impasse des Loges - 69460 Le Perréon

**Hotel - restaurant**

The Château des Loges, an 18th century mansion, will welcome you in the heart of the Beaujolais vineyard for a gourmet stopover at the restaurant or a stay at the hotel in the middle of the vineyards. A refined and warm setting in peaceful wine villages.

**RATES (indication)**

Double room: 95 to 135 €  
 Twin room: 110 to 135 €  
 Single room: from 110 €  
 Triple room: 135 €  
 Room sleeping 4: 155 €

**10 rooms, 26 people**

☎ 04 74 03 27 12  
 @ contact@chateaudesloges.com  
 www.chateaudesloges.com



*From 01/01 to 31/12/2022  
 Opening hours on Wednesday, Thursday, Friday  
 and Saturday between 9 am and 9 pm. On  
 Sunday between 9 am and 6 pm.*

**HÔTEL LE CHATARD (GROUPE)** ★★

1, allée du Mas - 69490 Sarcey

**Hotel - restaurant**

Recently renovated, Le Chatard, in the same family for six generations, is located in the heart of the charming village of Sarcey. It has a superb relaxation complex and is the ideal place to find replenishment during your stays, receptions and seminars.

**RATES (indication)**

Group rate half-board/person: 82 to 139 €  
 Group rate bed & breakfast / person: 72 to 106 €.

☎ 04 74 26 85 85  
 @ accueil@le-chatard.fr  
 www.le-chatard.com

*From 01/01 to 31/12/2022.*

**HÔTEL-RESTAURANT LE CHATARD**

1, allée du Mas - 69490 Sarcey

**Hotel - restaurant**

Recently renovated, Le Chatard that has been operated by the same family for six generations, is located in the heart of the charming village of Sarcey. It has a superb wellness complex and is the ideal place to revitalise yourself during your stays, receptions and seminars.

**RATES (indication)**

Double room: 91 to 123 € (according to category of room)  
Double room with breakfast: 113 to 145 € (according to category of

*From 01/01 to 31/12/2022. Except week-end in January, from Friday evening to Sunday evening, except group reservations.*

**40 rooms**

☎ 04 74 26 85 85

@ accueil@le-chatard.fr

🌐 www.le-chatard.com

**DOMAINE DES PIERRES DORÉES**

Pré Voisin - Domaine des Pierres Dorées - Lieu-dit Le Pré Vert - 69620 Ternand

**Hotel - restaurant**

25 km from north west of Lyon, 20 km from west of Villefranche sur Saône, 10 km from the Villefranche exit of the A89 motorway, the Domaine des Pierres Dorées in Ternand is situated in the heart of a closed park with trees.

**11 rooms, 40 people**

☎ 04 78 34 14 29

☎ 07 78 66 41 77

@ domainedespierresdorees@villagefani.com

🌐 www.villagefani.com/domaine-pierres-dorees.php

**RATES (indication)**

Double room: 100 € (Extra bed : 15€)

Single room: 85 € (breakfast included)

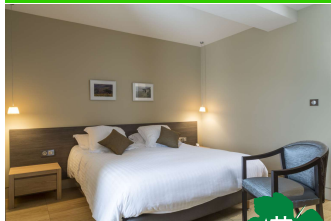
Extra bed (children) : 8€



*From 01/01 to 31/12. Open 24 hours a day.*

**AUBERGE DE CLOCHERLE**

173 Rue Gabriel Chevallier - 69460 Vaux-en-Beaujolais

**Hotel - restaurant**

The Auberge Clocherle offers all the comfort of a traditional hotel with its 10 personalized charming rooms.

**RATES (indication)**

Double room: from 110 €  
Twin room: from 110 €  
Single room: from 110 €  
Triple room: from 147 €  
Breakfast: 14 €  
Supplementary payment for pets: 8 €.

*From 02/01 to 30/12/2022, every Monday, Thursday, Friday, Saturday and Sunday.*

**10 rooms, 20 people**

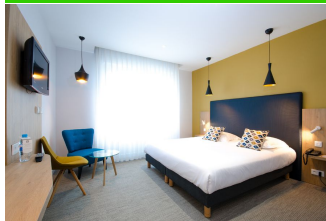
☎ 04 74 03 20 16

@ contact@aubergedeclocherle.fr

🌐 www.aubergedeclocherle.fr

**BEST WESTERN PLAISANCE HOTEL**

96 avenue de la Libération - 69400 Villefranche-sur-Saône

**Hotel**

A friendly and refined setting for leisure or business trips.

**RATES (indication)**

Double room: 73 to 119 €  
Single room: 69 to 89 €  
Triple room: 99 to 139 €  
Room sleeping 4: 130 to 160 €  
Suite: 130 to 160 €  
Breakfast: 12 €  
Supplementary payment for pets: 8 €.

Tax not included.



*From 01/01 to 31/12.*

**CAMPANILE HOTEL**

210 rue Georges Mangin - 69400 Villefranche-sur-Saône

**Hotel - restaurant**

Hotel located in the heart of the Beaujolais 30 km north of Lyon on the A6 direction Paris

**RATES (indication)**

Double room: 57 €.

**40 rooms, 99 people**

☎ 04 74 68 07 58

@ villefranchesursaone@campanile.fr

🌐 www.campanile-villefranche-sur-saone.fr/fr



*All year round, daily.*

**KIRIAD HOTEL**

146 rue de la Sous-Préfecture - 69400 Villefranche-sur-Saône

**Hotel**

Charming little hotel in the cultural, administrative and retail center of Villefranche

**RATES (indication)**

Double room: 72 to 129 €  
Breakfast: 11.50 €  
Supplementary payment for pets: 8 €  
Tourist taxes: 0.80 €.

**39 rooms, 78 people**

☎ 04 74 62 01 04

@ villefranchesursaone@kyriad.fr

🌐 www.kyriad-villefranche-sur-saone.fr



*From 01/01 to 31/12/2022. Opening hours on Monday, Tuesday, Wednesday, Thursday and Friday between 6.30 am and 11 pm. On Saturday and Sunday between 7 am and 11 pm.*



**LA FERME DU POULET HOTEL** ★★

180 Rue Georges Mangin - 69400 Villefranche-sur-Saône

**Hotel**

Former 17th century monastery converted into a luxury hostelry. Its restaurant will serve delicious dishes in a refined setting. The private reception and seminar room welcomes you for your family meals and others.

**RATES (indication)**

Double room: 108 to 138 €

Suite: 118 to 150 €

Breakfast: from 16 €

Supplementary payment for pets: from 10 €.

**9 rooms, 20 people**

☎ 04 74 62 19 07

@ contact@lafermedupoulet.com

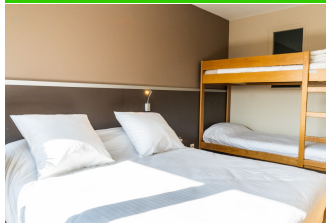
🌐 www.lafermedupoulet.com



*From 01/01 to 31/12/2022, every Tuesday,  
Wednesday, Thursday, Friday and Saturday.*

**NEWPORT HOTEL** ★★

610 avenue de l'Europe - 69400 Villefranche-sur-Saône

**Hotel - restaurant****RATES (indication)**

Double room: 85 €

Single room: 75 €

Triple room: 105 €

Room sleeping 4: 125 €

Breakfast: 10 €

Supplementary payment for pets: 10 €.

**29 rooms**

☎ 04 74 68 75 59

@ contact@hotelnewportvillefranche.com

🌐 www.hotelnewportvillefranche.com/



*From 01/01 to 31/12  
Opening hours daily .*



# Hotels 4\* - Bresse

## HOTEL "LE MOULIN DE LA BREVETTE" ★★★

404 Chemin de la Brevette - 01190 Arbigny



### Hotel

Comfortable hotel with renovated rooms in the middle of the countryside between Burgundy and Bresse, in a very calm area, near an old mill of the XVIIth century.

### RATES (indication)

From 01/05 to 30/09/2022  
 Double room: from 78 €  
 Triple room: from 85 €  
 Chambre familiale: from 150 €  
 Suite: from 170 €  
 Breakfast: 13 €  
 Sup from **From 01/05 to 30/09/2022, daily between 4 pm and 9 pm.**

**From 01/10/2022 to 30/04/2023 between 5 pm and 9 pm. Closed on Sunday.**

**19 rooms, 57 people**

+33 385 36 49 27

reception@moulindelebrevette.com

www.hotel-moulin-de-la-brevette.fr



## BEST WESTERN HÔTEL DE FRANCE ★★★

19 Place Bernard - 01000 Bourg-en-Bresse



### Hotel - restaurant

This charming hotel, 3 \*, in the center of Bourg-en-Bresse has been beautifully renovated and refurbished. It offers 45 spacious rooms with a private garage and a public car park outside the hotel. Easy access by the motoway "A40" ou "A39". Quality restauration on site.

**45 rooms, 94 people**

04 74 23 30 24

direction@bestwestern-hoteldefrance.com

www.bestwestern-hoteldefrance.com

### RATES (indication)

Double room: from 91 €  
 Double room with breakfast: from 115 €  
 Twin room: from 111 €



All year round.

## IBIS BOURG-EN-BRESSE HOTEL ★★★

6 rue du Moulin de Brou - 01000 Bourg-en-Bresse



### Hotel - restaurant

Hotel situated in a green place at 2' walk from the Monastery of Brou and close to the town centre and Ainterexpo.

TEMPORARY CLOSING,  
 REOPENING CURRENT MAY

### RATES (indication)

Tarifs non communiqués.

**60 rooms, 120 people**

04 74 22 52 66

Virginie.MARECHAL@accor.com

all.accor.com/hotel/0603/index.fr.shtml?dateIn=2022-06-07&nights=1&compositions=1&stayplus=false&snu=false#origin=ibis



All year round.

## IBIS STYLES ★★★

12 Rue Pavé d'Amour - 01000 Bourg-en-Bresse



### Hotel

Design and comfortable hotel situated in the town centre. Free parking, WiFi, playing corner for children, meeting room.

**47 rooms, 99 people**

04 74 23 68 25

h7975@accor.com

all.accor.com/hotel/7975/index.fr.shtml?dateIn=2022-06-07&nights=1&compositions=1&stayplus=false&snu=false#origin=ibis

### RATES (indication)

Double room: 79 to 124 €  
 Twin room: 79 to 124 €  
 Single room: 64 to 109 €  
 Suite: 84 to 134 €  
 Supplementary payment for pets: 8 €.

Free entry for accompanying guides, the drivers.



**From 01/01 to 31/12**  
 Opening hours daily between 6.30 am and 10 pm.

## KYRIAD HÔTEL ★★★

18 rue des Dîmes - Boulevard Kennedy - 01000 Bourg-en-Bresse



### Hotel

Located 60km from Lyon, the Kyriad Hotel is easily accessible via the A40 motorway (exit 6). The Kyriad team from Bourg en Bresse welcomes you.

### RATES (indication)

Tarifs non communiqués.

**40 rooms, 63 people**

04 74 22 50 88

bourgenbresse@kyriad.fr

ain-prestataire-hotel.for-system.com/index.aspx?Globales/ListeldFournisseur=2802



**From 04/01 to 31/12.**  
 Reception from 6.30 a.m. to 10.30 p.m. and from 3 p.m. to 10 p.m. Monday to Saturday, and Sunday from 7 a.m. to 12 p.m. and 3 p.m. to 10 p.m.

## LE GRIFFON D'OR ★★★

10 rue du 4 septembre - 01000 Bourg-en-Bresse



### Hotel

Charming hotel in and old mansion in the center of Bourg-en-Bresse. Each room has a special decoration, TV, air conditioning, safe box. Breakfast with local products. Free parking and spa, billards, fitness and massage on request

**17 rooms, 40 people**

04 74 23 13 24

contact@hotelgriffondor.fr

www.hotelgriffondor.fr

### RATES (indication)

Double room: 120 to 139 €  
 Single room: 98 to 117 €  
 Suite: 136 to 159 €  
 Breakfast: 14 €

**From 01/01 to 31/12/2022**  
 Opening hours on Monday between 10 am and 11 pm. On Tuesday, Wednesday, Thursday, Friday and Saturday between 6 am and 11 pm. On Sunday between 6 am and 12 pm.



**LE LOGIS DE BROU HOTEL** ★★★

132 boulevard de Brou - 01000 Bourg-en-Bresse

**Hotel**

3\*\*\* hotel situated close to Monastery of Brou and the old parts of the city. Garden, bar, garage and car park, WiFi. Spacious and sound-proofed rooms with balconies and decorated with personal touch. Many restaurants around. Easy to join from highway A40(exit 7)

**RATES (indication)**

Double room: 84 to 113 €  
Double room with breakfast: 96 to 125 €  
Twin room: 84 to 113 €

**30 rooms, 65 people**

☎ 04 74 22 11 55  
@ logisdebrou@free.fr  
www.logisdebrou.com



All year round.

**QUALYS-HOTEL TERMINUS** ★★★

19 avenue Alphonse Baudin - 01000 Bourg-en-Bresse

**Hotel**

Unexpected in town ... ! Rooms with view on a beautiful and green park. Many services, comfortable and quiet rooms in front of the train station and not far from the town centre.

**48 rooms, 112 people**

☎ 04 74 21 01 21  
@ hotelterminus.bourg@orange.fr  
www.hotel-terminus-bourg.com

**RATES (indication)**

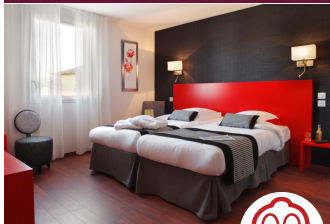
Double room: 75 to 125 €  
Double room with breakfast: 97 to 117 €  
Twin room: 85 to 130 €  
Single room: 75 to 110 €  
Triple room: 85 to 150 €  
Breakfast: 11 €



All year round.

**HOTEL "AUBERGE BRESSANE DE BUELLAS"** ★★★

10 route de Buesle - 01310 Buellas

**Hotel - restaurant**

The Hotel "L'Auberge Bressane Buellas" is ideal for a break or join the friends. The place retains all the charm of traditional Bresse.

**RATES (indication)**

Double room: 98 to 195 €  
Double room with breakfast: 108 to 205 €  
Twin room: 128 to 160 €  
Single room: 82 to 195 €  
Triple room: 146 to 195 €  
Breakfast: 11 €

*From 01/01 to 31/12/2022*  
*Opening hours on Monday and Tuesday between 8 am and 11.30 am and between 4 pm and 7.30 pm. On Wednesday between 8 am and 11.30 am and between 4 pm and 7.30 pm. On Thursday, Friday and Saturday between 8 am and 8.30 pm. On Sunday between 8 am and 7 pm.*

**13 rooms, 30 people**

☎ 04 74 24 20 20  
@ reservation@auberge-buellas.com  
www.auberge-buellas.com

**HÔTEL IBIS ROUGE \*\*\*** ★★★

610 allée Bresse Revermont - Autoroute A40 - 01250 Jasseron

**Hotel - restaurant**

**RATES (indication)**  
Tarifs non communiqués.

**32 rooms, 85 people**

☎ 04 74 22 30 80  
@ h1761@accor.com  
www.accorhotels.com/fr/hotel-1761-ibis-bourg-jasseron-teyssonge/index.shtml



All year round.

**THE ORIGINALS LE PILLEBOIS** ★★★

500 rue Malafertoise - 01340 Malafretaz

**Hotel - restaurant**

Beautiful hotel with a contemporary decor, in the heart of the Bresse, quietly situated. 10 minutes from the exit 5 of Bourg-en-Bresse, TGV trainstation, 1 hour from Lyon Saint Exupéry. 30 rooms air conditioning, restaurant, terrace, 3 seminar rooms. Fitness room, indoor pool, free WiFi.

**RATES (indication)**

Double room: 69 to 114 €  
Double room with breakfast: 93 to 138 €  
Twin room: 84 to 113 €

*From 10/01 to 06/08/2022*  
*Opening hours on Monday, Tuesday, Wednesday and Thursday between 7.30 am and 8.30 pm. On Friday between 7.30 am and 8 pm. On Saturday between 7.30 am and 12 pm and between 3 pm and 7.45 pm.*

**HOTEL-RESTAURANT "LE RAISIN"** ★★★

2, place Michel Poisat - 01190 Pont-de-Vaux

**Hotel - restaurant**

Half way between Paris and Marseille, or Belgium and Spain, near the main highways (A6, A39 and A40), the Raisin is a comfortable stop for a night or more. The restaurant (Chef Frédéric michel) has got a star in the Michelin Guide.

**39 people**

☎ +33 385 30 30 97  
@ contact@leraisin.com  
www.leraisin.com

**RATES (indication)**

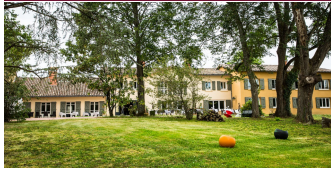
Double room: 74 to 79 €  
Single room: 74 €  
Breakfast: 13 €  
Tourist taxes: 1.10 €.



*From 01/01 to 31/12 between 12 pm and 8.45 pm.*  
*Closed Monday and Sunday.*

**LA HUCHETTE HOTEL AND RESTAURANT** ★★★

1089 route de Bourg-en-Bresse - 01750 Replonges



**Hotel - restaurant**

In Bresse, 2 steps from Burgundy, near Mâcon, La Huchette offers a charming stop just 3 hours from Paris or Orange and 1 hour from Geneva.



**RATES (indication)**

Double room: 90 to 150 €  
Triple room: 160 €  
Room sleeping 4: 180 €  
Breakfast: 18 €  
Tourist taxes: 1 €.

**14 rooms, 46 people**

- ☎ 00 33 385 31 03 55
- @ contact@la-huchette.fr
- 🌐 www.la-huchette.fr

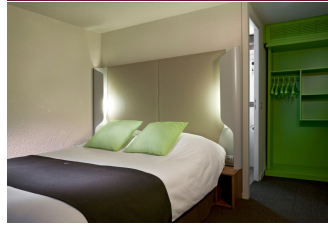
For the room rate, please consult



*From 25/01 to 31/12/2022.*

**CAMPANILE HOTEL & RESTAURANT** ★★★

694 bis rue des Vareys - Parc de la Chambière - 01440 Viriat



**Hotel - restaurant**

Comfortable hotel both for families and business travellers. WiFi, working desk, TV, high-quality beds... Hotel recently renovated. Easily accessible from the town centre and the motorway A40. Catering and seminar rooms.

**42 rooms, 84 people**

- ☎ 04 74 45 25 45
- @ bourgenbresse.viriat@campanile.fr
- 🌐 bourg-en-bresse-viriat.campanile.com/fr-fr/

Children up to 10 are free in their parents' room. Breakfast for children is only €4.75 €5 discount at the restaurant for hotel guests. Possibility of proposing funeral cocktails



*All year round.*

# Hotels 3\* - Bresse

## HOTEL "LE MOULIN DE LA BREVETTE" ★★

404 Chemin de la Brevette - 01190 Arbigny



### Hotel

Comfortable hotel with renovated rooms in the middle of the countryside between Burgundy and Bresse, in a very calm area, near an old mill of the XVIIth century.

### RATES (indication)

From 01/05 to 30/09/2022

Double room: from 78 €

Triple room: from 85 €

Chambre familiale: from 150 €

Suite: from 170 €

Breakfast: 13 €

Sup from **From 01/05 to 30/09/2022, daily between 4 pm and 9 pm.**

**From 01/10/2022 to 30/04/2023 between 5 pm and 9 pm. Closed on Sunday.**

**19 rooms, 57 people**

+33 385 36 49 27

reception@moulindelebrevette.com

www.hotel-moulin-de-la-brevette.fr



## BEST WESTERN HÔTEL DE FRANCE ★★

19 Place Bernard - 01000 Bourg-en-Bresse



### Hotel - restaurant

This charming hotel, 3 \*, in the center of Bourg-en-Bresse has been beautifully renovated and refurbished. It offers 45 spacious rooms with a private garage and a public car park outside the hotel. Easy access by the motoway "A40" ou "A39". Quality restauration on site.

**45 rooms, 94 people**

04 74 23 30 24

direction@bestwestern-hoteldefrance.com

www.bestwestern-hoteldefrance.com

### RATES (indication)

Double room: from 91 €

Double room with breakfast: from 115 €

Twin room: from 111 €



All year round.

## IBIS BOURG-EN-BRESSE HOTEL ★★

6 rue du Moulin de Brou - 01000 Bourg-en-Bresse



### Hotel - restaurant

Hotel situated in a green place at 2' walk from the Monastery of Brou and close to the town centre and Ainterexpo.

TEMPORARY CLOSING, REOPENING CURRENT MAY

### RATES (indication)

Tarifs non communiqués.

**60 rooms, 120 people**

04 74 22 52 66

Virginie.MARECHAL@accor.com

all.accor.com/hotel/0603/index.fr.shtml?dateIn=2022-06-07&nights=1&compositions=1&stayplus=false&snu=false#origin=ibis



All year round.

## IBIS STYLES ★★

12 Rue Pavé d'Amour - 01000 Bourg-en-Bresse



### Hotel

Design and comfortable hotel situated in the town centre. Free parking, WiFi, playing corner for children, meeting room.

### RATES (indication)

Double room: 79 to 124 €

Twin room: 79 to 124 €

Single room: 64 to 109 €

Suite: 84 to 134 €

Supplementary payment for pets: 8 €.

Free entry for accompanying guides, the drivers.

**47 rooms, 99 people**

04 74 23 68 25

h7975@accor.com

all.accor.com/hotel/7975/index.fr.shtml?dateIn=2022-06-07&nights=1&compositions=1&stayplus=false&snu=false#origin=ibis



From 01/01 to 31/12

Opening hours daily between 6.30 am and 10 pm.

## KYRIAD HÔTEL ★★

18 rue des Dîmes - Boulevard Kennedy - 01000 Bourg-en-Bresse



### Hotel

Located 60km from Lyon, the Kyriad Hotel is easily accessible via the A40 motorway (exit 6). The Kyriad team from Bourg en Bresse welcomes you.

### RATES (indication)

Tarifs non communiqués.

**40 rooms, 63 people**

04 74 22 50 88

bourgenbresse@kyriad.fr

ain-prestataire-hotel.for-system.com/index.aspx?Globales/ListeldFournisseur=2802



From 04/01 to 31/12.

Reception from 6.30 a.m. to 10.30 p.m. and from 3 p.m. to 10 p.m. Monday to Saturday, and Sunday from 7 a.m. to 12 p.m. and 3 p.m. to 10 p.m.

## LE GRIFFON D'OR ★★

10 rue du 4 septembre - 01000 Bourg-en-Bresse



### Hotel

Charming hotel in and old mansion in the center of Bourg-en-Bresse. Each room has a special decoration, TV, air conditioning, safe box. Breakfast with local products. Free parking and spa, billards, fitness and massage on request

**17 rooms, 40 people**

04 74 23 13 24

contact@hotelgriffondor.fr

www.hotelgriffondor.fr

### RATES (indication)

Double room: 120 to 139 €

Single room: 98 to 117 €

Suite: 136 to 159 €

Breakfast: 14 €.

From 01/01 to 31/12/2022

Opening hours on Monday between 10 am and 11 pm. On Tuesday, Wednesday, Thursday, Friday and Saturday between 6 am and 11 pm. On Sunday between 6 am and 12 pm.



**LE LOGIS DE BROU HOTEL** ★★

132 boulevard de Brou - 01000 Bourg-en-Bresse

**Hotel**

3\*\*\* hotel situated close to Monastery of Brou and the old parts of the city. Garden, bar, garage and car park, WiFi. Spacious and sound-proofed rooms with balconies and decorated with personal touch. Many restaurants around. Easy to join from highway A40(exit 7)

**RATES (indication)**

Double room: 84 to 113 €  
Double room with breakfast: 96 to 125 €  
Twin room: 84 to 113 €

**30 rooms, 65 people**

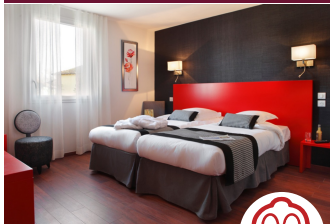
☎ 04 74 22 11 55  
@ logisdebrou@free.fr  
www.logisdebrou.com



All year round.

**HOTEL "AUBERGE BRESSANE DE BUELLAS"** ★★

10 route de Buesle - 01310 Buellas

**Hotel - restaurant**

The Hotel "L'Auberge Bressane Buellas" is ideal for a break or join the friends. The place retains all the charm of traditional Bresse.

**RATES (indication)**

Double room: 98 to 195 €  
Double room with breakfast: 108 to 205 €  
Twin room: 128 to 160 €  
Single room: 82 to 195 €  
Triple room: 146 to 195 €  
Breakfast: *From 01/01 to 31/12/2022*  
Supper: *Opening hours on Monday and Tuesday between 8 am and 11.30 am and between 4 pm and 7.30 pm. On Wednesday between 8 am and 11.30 am and between 4 pm and 7.30 pm. On Thursday, Friday and Saturday between 8 am and 8.30 pm. On Sunday between 8 am and 7 pm.*

**13 rooms, 30 people**

☎ 04 74 24 20 20  
@ reservation@auberge-buellas.com  
www.auberge-buellas.com

**THE ORIGINALS LE PILLEBOIS** ★★

500 rue Malafertoise - 01340 Malafretaz

**Hotel - restaurant**

Beautiful hotel with a contemporary decor, in the heart of the Bresse, quietly situated. 10 minutes from the exit 5 of Bourg-en-Bresse, TGV trainstation, 1 hour from Lyon Saint Exupéry. 30 rooms air conditioning, restaurant, terrace, 3 seminar rooms. Fitness room, indoor pool, free WiFi.

**RATES (indication)**

Double room: 69 to 114 €  
Double room with breakfast: 93 to 138 €  
Twin: *From 10/01 to 06/08/2022*  
Opening hours on Monday, Tuesday, Wednesday and Thursday between 7.30 am and 8.30 pm. On Friday between 7.30 am and 8 pm. On Saturday between 7.30 am and 12 pm and between 3 pm and 7.45 pm.

**31 rooms, 64 people**

☎ 04 74 25 48 44  
@ reception@hotellépillebois.com  
www.hotellépillebois.com

**QUALYS-HOTEL TERMINUS** ★★

19 avenue Alphonse Baudin - 01000 Bourg-en-Bresse

**Hotel**

Unexpected in town ... ! Rooms with view on a beautiful and green park. Many services, comfortable and quiet rooms in front of the train station and not far from the town centre.

**48 rooms, 112 people**

☎ 04 74 21 01 21  
@ hotelterminus.bourg@orange.fr  
www.hotel-terminus-bourg.com

**RATES (indication)**

Double room: 75 to 125 €  
Double room with breakfast: 97 to 117 €  
Twin room: 85 to 130 €  
Single room: 75 to 110 €  
Triple room: 85 to 150 €  
Breakfast: 11 €



All year round.

**HÔTEL IBIS ROUGE \*\*\*** ★★

610 allée Bresse Revermont - Autoroute A40 - 01250 Jasseron

**Hotel - restaurant**

RATES (indication)  
Tarifs non communiqués.

**32 rooms, 85 people**

☎ 04 74 22 30 80  
@ h1761@accor.com  
www.accorhotels.com/fr/hotel-1761-ibis-bourg-jasseron-teyssonge/index.shtml



All year round.

**HOTEL-RESTAURANT "LE RAISIN"** ★★

2, place Michel Poisat - 01190 Pont-de-Vaux

**Hotel - restaurant**

Half way between Paris and Marseille, or Belgium and Spain, near the main highways (A6, A39 and A40), the Raisin is a comfortable stop for a night or more. The restaurant (Chef Frédéric michel) has got a star in the Michelin Guide.

**39 people**

☎ +33 385 30 30 97  
@ contact@leraisin.com  
www.leraisin.com

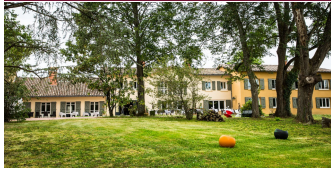
**RATES (indication)**

Double room: 74 to 79 €  
Single room: 74 €  
Breakfast: 13 €  
Tourist taxes: 1.10 €.



*From 01/01 to 31/12 between 12 pm and 8.45 pm.  
Closed Monday and Sunday.*

**LA HUCHETTE HOTEL AND RESTAURANT** ★★★  
1089 route de Bourg-en-Bresse - 01750 Replonges



**Hotel - restaurant**  
In Bresse, 2 steps from Burgundy, near Mâcon, La Huchette offers a charming stop just 3 hours from Paris or Orange and 1 hour from Geneva.



**RATES (indication)**  
Double room: 90 to 150 €  
Triple room: 160 €  
Room sleeping 4: 180 €  
Breakfast: 18 €  
Tourist taxes: 1 €.

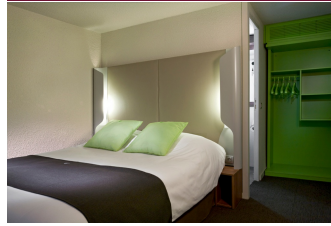
**14 rooms, 46 people**  
☎ 00 33 385 31 03 55  
@ contact@la-huchette.fr  
🌐 www.la-huchette.fr

For the room rate, please consult



*From 25/01 to 31/12/2022.*

**CAMPANILE HOTEL & RESTAURANT** ★★★  
694 bis rue des Vareys - Parc de la Chambière - 01440 Viriat



**Hotel - restaurant**  
Comfortable hotel both for families and business travellers. WiFi, working desk, TV, high-quality beds... Hotel recently renovated. Easily accessible from the town centre and the motorway A40. Catering and seminar rooms.

**42 rooms, 84 people**  
☎ 04 74 45 25 45  
@ bourgenbresse.viriat@campanile.fr  
🌐 bourgenbresse.viriat.campanile.com/fr-fr/

Children up to 10 are free in their parents' room. Breakfast for children is only €4.75 €5 discount at the restaurant for hotel guests. Possibility of proposing funeral cocktails



*All year round.*



# Hotels 5\* Rhone Valley

## VILLA ELISA. M

3 rue Jean Beaussier - 07200 Aubenas

★★★★



### Hotel

Villa Elisa. M is a "hôtel de charme" with 8 spacious rooms including 2 stunning suites near Aubenas old town between the Ardèche mountain and gorges.

### RATES (indication)

Double room: 115 to 190 €  
Single room: 95 to 170 €  
Room sleeping 4: 190 to 250 €  
Suite: 190 to 220 €  
Breakfast: 15 €.

### 8 rooms, 19 people

☎ 06 72 78 95 22

@ contact@elisa-m.com

🌐 www.villa-elisa-m.com



All year round.

## AUBERGE DE BANNE HOTEL

Place du Fort - 07460 Banne

★★★★



### Hotel

In central Banne, endless views, stylish and honest charm, patio-style pool, function room, 12 rooms (including a "family suite").

### RATES (indication)

Rates vary according to the time of the year.

### 11 rooms, 24 people

☎ 04 75 89 07 78

☎ 04 75 36 66 10

@ hotel@aubergedebanne.fr

🌐 www.aubergedebanne.fr

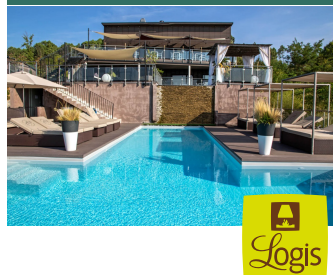


All year round.

## CHALVÊCHE HOTEL

Chalvêches - 07230 Fauçères

★★★★



### Hotel - restaurant

Take time to escape, to get fresh ideas, to take advantage of every moment or to live simply for one. By staying at Le Domaine de Chalvêches, the establishment invites you to live a beautiful moment of peace of mind.

In a frame protected at the heart of Ardèche, the hotel reveals a site of exception where the man communes with the nature. Here, to Fauçères, nothing attaches you to time but rather to relaxed rhythm of life. In this place of country, only watchwords: rest.

### 10 rooms, 30 people

☎ 04 75 35 76 16

@ contact@domaine-chalveches.com

🌐 www.domaine-chalveches.fr



From 08/04 to 31/10/2022.

## DOMAINE DE SAINT CLAIR SPA & GOLF

Route du Golf "Le Pelou" - 07430 Saint-Clair

★★★★



### Hotel - restaurant

Domaine de Saint Clair is an amazing spot in the middle of an 18-hole golf course: 54 modern rooms and apartments conceived for your comfort. There are also a 1 star restaurant, a bar and a wellness centre.

### RATES (indication)

Double room: 99 to 195 €  
Breakfast: from 16 €  
Supplementary payment for pets: 10 €.

### 54 rooms, 120 people

☎ +33 (0)4 75 67 01 00

@ reservation@domainestclair.fr

🌐 www.domainestclair.fr

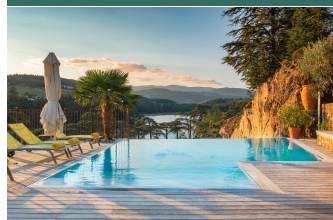


From 01/01 to 31/12/2022.

## INN OF THE LAKE

Lac du Ternay - 07100 Saint-Marcel-lès-Annonay

★★★★



### Hotel - restaurant

Top hotel on the banks of Le Ternay Lake. Warm and friendly atmosphere. "A lakeside wellness haven..." The restaurant has been "Maître Restaurateur" approved.

### RATES (indication)

Double room: 129 to 174 €  
Single room: 89 to 104 €  
Breakfast: from 14 €  
Supplementary payment for pets: from 10 €.

### 12 rooms, 25 people

☎ +33 (0)4 75 67 12 03

@ contact@aubergedulac.fr

🌐 www.aubergedulac.fr

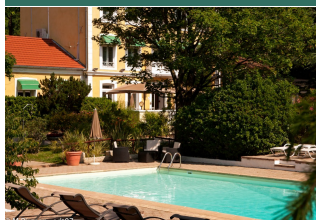


From 29/01 to 31/12/2022.

## HÔTEL-RESTAURANT LE CÈDRE DE SOYONS

670 route de Nîmes - Route nationale 86 - 07130 Soyons

★★★★



### Hotel - restaurant

A 24-room hotel whose interior has been redecorated to match the trends. Function rooms, pool, tennis courts and meeting room.

### RATES (indication)

Double room: 98 €  
Single room: 98 €  
Breakfast: 11 €.

### 24 rooms, 52 people

☎ 04 75 60 83 55

☎ 06 65 27 36 26

@ contact@lecedredesoyons.fr

🌐 lecedredesoyons.fr



From 01/01 to 30/06, every Tuesday, Wednesday, Thursday, Friday and Saturday.

From 01/07 to 31/08, every Monday, Tuesday, Wednesday, Thursday, Friday and Saturday.

From 01/09 to 31/12, every Tuesday, Wednesday, Thursday, Friday and Saturday.

**HÔTEL DE LA VILLEON** ★★★★★

2 Rue Davity - 07300 Tournon-sur-Rhône

**Hotel**

18th century listed 4\* luxury hotel in Tournon-sur-Rhône in the Ardèche (07) 50 mins south of Lyon in the heart of the Hermitage Tournonais vineyards. Member of the "Esprit de France" hotel and château collection" ([www.espritdefrance.com](http://www.espritdefrance.com)).

**16 rooms, 34 people**

☎ 04 75 06 97 50

@ [contact@hoteldelavilleon.com](mailto:contact@hoteldelavilleon.com)🌐 [www.hoteldelavilleon.com](http://www.hoteldelavilleon.com)**RATES (indication)**

Double room: 105 to 254 €

Suite: 205 to 364 €

Breakfast: 20 €

Supplementary payment for pets: 12 €



From 01/01 to 31/12/2022.

**HÔTEL VILLA WALBAUM\*\*\*\*** ★★★★★

615 Route des Estrades - 07150 Vallon-Pont-d'Arc

**Hotel****RATES (indication)**

Free entry for children &lt; 2 years.

☎ 04 75 88 04 04

@ [contact@villawalbaum.com](mailto:contact@villawalbaum.com)🌐 [www.domainewalbaum.com](http://www.domainewalbaum.com)

From 25/02 to 20/12/2022.

**HÔTEL CHÂTEAU LES OLIVIERS DE SALETTES** ★★★★★

Château de Salettes - 1205 route du Château - 26450 Charols

**Hotel - restaurant**

The Château Les Oliviers de Salettes is a charming hotel and restaurant in the Drôme Provençale, with outdoor pool and a wellness center. Its site is of exceptional beauty, a place full of history, warm and tranquil at the same time. A Château where everyone feels home in a relaxed and friendly atmosphere. Ideal for a romantic stay in the South of the France between luxury and relaxation.

**77 people**

☎ 04 75 00 19 30

@ [contact@chateau-lesoliviers.com](mailto:contact@chateau-lesoliviers.com)🌐 [www.chateau-lesoliviers.com](http://www.chateau-lesoliviers.com)**RATES (indication)**

From 01/01 to 31/12/2022.

**HÔTEL LA BASTIDE D'IRIS** ★★★★★

280, Route de Barjac - 07150 Vagnas

**Hotel**

An elegant 4-star hotel with 21 air-conditioned rooms and suites, with a terrace and private garden, heated outdoor swimming pool and balneo pool, and a shaded relaxation area. Our whole team are at hand to ensure your stay in Ardèche is unforgettable.

**21 rooms, 52 people**

☎ 04 75 88 44 77

@ [bienvenue@labastidediris.com](mailto:bienvenue@labastidediris.com)🌐 [www.labastidediris.com](http://www.labastidediris.com)**RATES (indication)**

Double room: from 102 €

Triple room: from 177 €

Room sleeping 4: from 205 €

Breakfast: 16 €.



From 21/01 to 17/12/2022.

**HÔTEL HELVIE** ★★★★★

5, Avenue Claude Expilly - 07600 Vals-les-Bains

**Hotel - restaurant**

Stylish decor, attention to detail and elegant rooms, pool to cool off in and Le Vivarais restaurant for delicious and inventive dishes. Come here to chill out, feel good and eat well.

**27 rooms, 51 people**

☎ 04 75 94 65 85

@ [courriel@hotel-helvie.com](mailto:courriel@hotel-helvie.com)🌐 [www.hotel-helvie.com](http://www.hotel-helvie.com)**RATES (indication)**

Double room: from 110 €

Breakfast: 18 to 21 €.



All year round.

**HÔTEL-RESTAURANT MANOIR LE ROURE** ★★★★★

4312 Route de Saint Paul - 26780 Châteauneuf-du-Rhône

**Hotel - restaurant**

Book your stay in Drôme provençale in the charming hotel of the Manoir Le Roure. Your nights will be sweet in one of the 10 rooms that we put at your disposal. We also offer 3 chalets with private spa on the terrace offering stunning views of the park. Each room or chalet has its own atmosphere, so there is something for everyone!

**26 people**

☎ 04 75 90 93 64

@ [reception@manoirleroure.com](mailto:reception@manoirleroure.com)🌐 [manoirleroure.com/](http://manoirleroure.com/)**RATES (indication)**

Double room: from 139 €.



From 01/01 to 31/12/2022.



**HÔTEL FERME CHAPOUTON** ★★★★★

200 route de Montélimar - 26230 Grignan

**Hotel - restaurant**

A place, a history and an exceptional view. Built in 1760 at the edge of the village of Grignan, the Ferme Chapouton offers 13 rooms of great comfort as well as a bistro gourmand. A charming stay in the old holiday home of Nicolas de Staël.

**30 people**

☎ 04 75 00 01 01

@ info@chapouton.com

🌐 www.chapouton.com

**RATES (indication)**

Double room: 79 to 245 €

Half-board: from 50 €

Breakfast: 20 €

Supplementary payment for pets: 10 €.



From 01/01 to 31/12/2022.

**HÔTEL LE CLAIR DE LA PLUME** ★★★★★

2 place du Mail - 26230 Grignan

**Hotel - restaurant**

In the historic village of Grignan, the Clair de Plume invites you to stay away from the noise of the world. Bedrooms with ancient furniture, gourmet 1\* Michelin restaurant, Bistro Bib gourmand, Mediterranean garden & organic pool, boutique.

**43 people**

☎ 04 75 91 81 30

@ info@clairplume.com

🌐 www.clairplume.com

**RATES (indication)**

Double room: 89 to 395 €

Suite: 299 to 495 €

Breakfast: from 25 €

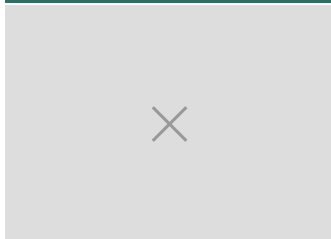
Supplementary payment for pets: from 20 €.



From 01/01 to 31/12/2022.

**HÔTEL LE TRÉSOR DES TEMPLIERS** ★★★★★

245 route de Donzère - 26780 Malataverne

**Hotel****RATES (indication)**

Double room: 144 to 250 €

Half-board: 232 to 338 €

Breakfast: 18 €

Supplementary payment for pets: 15 €.

**16 people**

☎ 09 61 23 13 68

☎ 06 07 29 40 90

@ contact@letresordestempliers.com

🌐 www.letresordestempliers.com

Tax not included.



From 01/01 to 31/12.

**HÔTEL-RESTAURANT DOMAINE DU COLOMBIER** ★★★★★

270 chemin de Malombre - 26780 Malataverne

**Hotel - restaurant**

Farmhouse dating from the 14th century in a 4-hectare park. A few minutes from Montélimar. Pool. Bedrooms with AC, all renovated.

**24 rooms**

☎ 04 75 90 86 86

@ reservation@domaine-colombier.com

🌐 www.domaine-colombier.com

**RATES (indication)**

Double room: 138 to 320 €

Twin room: 138 to 320 €

Single room: 138 to 320 €

Triple room: 182 to 320 €

Suite: 308 to 440 €

Breakfast: 18 to 23 €

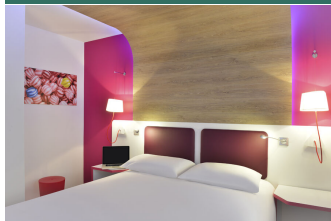
Supplementary payment for pets: 20 €.



From 09/02 to 31/12.

**HÔTEL IBIS STYLES** ★★★★★

1 bis avenue Saint Martin - 26200 Montélimar

**Hotel**

The hotel is situated in the town centre of Montélimar, the nougat capital, only 1 km from the railway station. From here, the finest tourist sites of the area, such as the Ardèche gorges and the Caverne du Pont d'Arc can be easily reached.

**158 people**

☎ 04 75 46 46 46

@ h9423@accor.com

🌐 www.accorhotels.com/fr/hotel-9423-ibis-styles-montelimar-centre/index.shtml

**RATES (indication)**

Double room: 76 to 180 €

Twin room: 76 to 180 €

Single room: 76 to 180 €

Suite: 130 to 230 €

Breakfast: 10 €



From 01/01 to 31/12.

**HÔTEL CHÂTEAU DE ROCHEGUEDE** ★★★★★

Place du Château - 26790 Rochegude

**Hotel - restaurant**

Beautiful stronghold dating from the 11th century, transformed during the Renaissance, overlooking the vineyards of Côtes du Rhône.

**55 people**

☎ 04 75 97 21 10

@ reservations@chateauderochegude.com

🌐 www.chateauderochegude.com

**RATES (indication)**

From 15/12/2021 to 31/03/2022

Double room: from 149 €.

From 01/04 to 31/12/2022

Double room: 160 to 589 €

Twin room: 160 to 589 €

Single room: 140 to 589 €

Triple room: 190 to 639 €



From 15/12/2021 to 31/12/2022, every Monday, Tuesday, Wednesday, Thursday, Friday and Saturday.

**HÔTEL L'ORÉE DU PARC** ★★★★★

6 avenue Gambetta - 26100 Romans-sur-Isère

**Hotel**

Located on the borders of the Vercors and the "Drôme des Collines" regions, near the Rhone Valley and on the road to the Alps, L'Orée du Parc is a charming 4-star hotel in the immediate vicinity of the historic city center of Romans-sur-Isère.

**16 rooms, 38 people**

☎ 04 75 70 26 12

@ contact@hotel-oreeparc.com

🌐 www.hotel-oreeparc.com

**RATES (indication)**

Double room: 99 to 137 €  
Twin room: 116 to 134 €  
Single room: 92 to 127 €  
Triple room: 145 to 154 €  
Room sleeping 4: 161 to 164 €

*All year round.***HOTEL-RESTAURANT VILLA AUGUSTA** ★★★★★

14 rue du Serre Blanc - 26130 Saint-Paul-Trois-Châteaux

**Gault & Millau****Hotel - restaurant**

Situated in the heart of Drôme Provençale, "Villa Augusta" in an old Mansion on a 3000m<sup>2</sup>-park, planted with trees and with a swimming pool. The Restaurant "David Mollicone" invites you to travel round the world with all the delicious flavours...

**46 people**

☎ 04 75 97 29 29

@ events@villaugusta.fr

🌐 www.villaugusta.fr

**RATES (indication)**

Breakfast: 9 to 18 €.

Tax not included.

*All year round.***HÔTEL & SPA FAC & SPERA** ★★★★★

1 avenue du Docteur Paul Durand - 26600 Tain-l'Hermitage

**Hotel - restaurant**

Fac & Spera Hotel & Spa is the translation of an art of living open to all. An invitation to discover what the Rhône Valley is, the land of choice for legendary wines. It's the perfect place to relax and feel at home.

**110 people**

☎ 04 75 08 65 00

@ contact@hotel.facetspera.fr

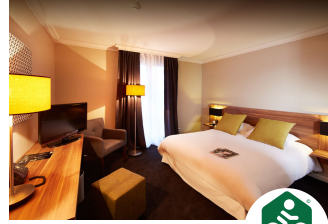
🌐 www.facetspera.fr

**RATES (indication)**

Double room: 110 to 156 €  
Triple room: 120 to 188 €  
Family room: 131 to 166 €  
Suite: 156 to 263 €  
Breakfast: 14 €  
Supplementary payment for pets:

*From 01/01 to 31/12/2022.***ATRIUM HÔTEL** ★★★★★

20 rue Jean-Louis Barrault - 26000 Valence

**Hotel**

The Atrium Hotel is located in a quiet street. It is close to the bus station, the "Valence City" railway station, the Exhibition Centre of Valence, and the historic centre with shopping, cinemas and theatres...

**134 people**

☎ 04 75 55 53 62

@ info@atrium-hotel.fr

🌐 www.atrium-hotel.fr

**RATES (indication)**

From 01/01 to 31/12/2021  
Double room: 82 to 122 €  
Twin room: 82 to 122 €  
Single room: 82 to 122 €  
Breakfast: 15 €  
Supplementary payment for pets:

*From 01/01 to 31/12.***HÔTEL DE FRANCE** ★★★★★

16 boulevard Général de Gaulle - 26000 Valence

**Hotel**

Our Hotel has the perfect situation in the heart of the city: you can walk to the restaurants, cultural sites, shops and nice areas of the city.

**103 people**

☎ 04 75 43 00 87

@ info@hotel-valence.com

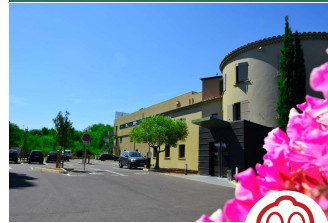
🌐 www.hotel-valence.com

**RATES (indication)**

Double room: 98 to 200 €  
Twin room: from 200 €  
Single room: 85 to 150 €  
Triple room: 121 to 184 €  
Room sleeping 4: 148 to 271 €  
Suite: 169 to 293 €  
Breakfast: 16 €  
Supplementary payment for pets:

*From 01/01 to 31/12/2022.***HÔTEL-RESTAURANT BEST WESTERN PLUS CLOS SYRAH** ★★★★★

Boulevard Pierre Tézier - 26000 Valence

**Hotel - restaurant****RATES (indication)**

Double room: from 115 €  
Twin room: from 115 €  
Single room: from 115 €  
Breakfast: 16 €  
Supplementary payment for pets: 10 €.

**96 people**

☎ 04 75 55 52 52

@ info@clos-syrah.com

🌐 www.clos-syrah.fr

Tax not included.

*From 01/01 to 31/12.*

**HÔTEL-RESTAURANT MERCURE VALENCE SUD** ★★★★★

2 rue Chantecouriol - 26000 Valence

**Hotel - restaurant**

## RATES (indication)

Group rate available for &gt; 15 people.

**150 people**

☎ 04 75 40 80 70

@ h6398-re@accor.com

🌐 www.accorhotels.com/fr/hotel-6398-hotel-mercure-valence-sud/index.shtml



From 01/01 to 31/12.

**HÔTEL-RESTAURANT NOVOTEL VALENCE SUD** ★★★★★

217 avenue de Provence - 26000 Valence

**Hotel - restaurant**

## RATES (indication)

Double room: 99 to 250 €  
Single room: 99 to 250 €  
Suite: 159 to 310 €  
Breakfast: 8 to 16.50 €  
Supplementary payment for pets: 15 €.

**424 people**

☎ 04 75 82 09 09

@ h0455@accor.com

🌐 all.accor.com/hotel/0455/index.fr.shtml?dateIn=&nights=&compositions=2&stayplus=false#origin=novotel

Group rate available for &gt; 10 people.



From 01/01 to 31/12/2022.

**HÔTEL-RESTAURANT PIC - MAISON PIC** ★★★★★

285 avenue Victor Hugo - 26000 Valence

**Hotel - restaurant**

Luxury, quiet and voluptuousness. But we should also add its spirited, contemporary, chic and sometimes even slightly impertinent qualities.



## RATES (indication)

Double room: 290 to 470 €  
Twin room: 290 to 470 €  
Single room: 290 to 470 €  
Suite: 460 to 600 €  
Breakfast: 33 €  
Supplementary payment for pets: 45 €  
Tourist taxes: 4 €.

**32 people**

☎ 04 75 44 15 32

@ contact@pic-valence.com

🌐 www.anne-sophie-pic.com



All year round.

**VICTORIA HOTEL** ★★★★★

37 rue Denis Papin - 26000 Valence

**Hotel**

Boutique Hotel in the heart of Valence with all the criteria of a luxury hotel.

## RATES (indication)

Double room: 130 to 160 €  
Single room: 130 to 160 €  
Breakfast: 15 €  
Supplementary payment for pets: 10 €  
Car park: 7 €.

**24 people**

☎ 04 28 99 01 60

@ contact@hotel-victoria-valence.fr

🌐 www.hotel-victoria-valence.fr

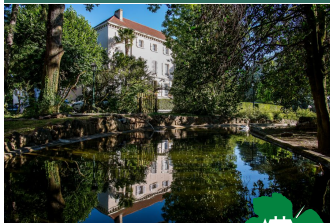
Tax not included.



From 01/01 to 31/12.

**DOMAINE DE CLAIREFONTAINE - LES JARDINS DE CLAIREFONTAINE** ★★★★★

105 Chemin des Fontanettes - 38121 Chonas-l'Amballan

**Hotel - restaurant**

The Jardins de Clairefontaine are designed in the style of a traditional Dauphiné nut-drying building. This charming house with 18 bedrooms is just a few yards away from the manor house and in the green setting of the estate park.



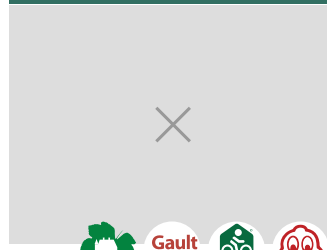
## RATES (indication)

Double room: 140 to 198 €  
Double room with breakfast: 172 to 238 €  
Single room: 140 to 198 €  
Breakfast: 16 to 20 €  
Supplementary payment for pets:

*Fermeture annuelle de mi-décembre à mi-janvier.  
Réouverture prévue le 19 avril 2021*

**THE PYRAMID** ★★★★★

14 boulevard Fernand Point - 38200 Vienne

**Hotel - restaurant**

This wonderful and magic hotel labelled Relais & Château is linked to its great head-chefs' history from Fernand Point to Patrick Henriroux. Located just 30 kilometres from Lyon, la Pyramide is certainly the ideal place for a break on the way to or back from the French Riviera.

**23 ch., 52 pers.**

☎ 04 74 53 01 96

@ pyramide@relaischateaux.com

🌐 www.lapyramide.com

## RATES (indication)

Double room: 160 to 300 €  
Single room: 160 to 300 €  
Suite: 350 to 460 €

*From 27/12/2018 to 04/02/2019, daily.  
Closed exceptionally on 31/12/2018.*

*From 07/03 to 31/12/2019, daily.  
Closed exceptionally on May 1st.*



**BEAU RIVAGE HOTEL** ★★★★★  
2 rue du Beau Rivage - 69420 Condrieu



**Hotel - restaurant**  
The natural light and appeal of the Rhone riverbanks, the terraces reaching to the water's edge, the magic of a secret garden... All sensations making the Beau Rivage Hotel a haven of peace for a stay outside time.

**29 rooms, 70 people**  
☎ 04 74 56 82 82  
@ infos@hotel-beaurivage.com  
🌐 www.hotel-beaurivage.com

**RATES (indication)**  
Double room: 115 to 190 €  
Suite: 225 to 340 €  
Breakfast: 19 €  
Supplementary payment for pets: 12 €.

*From 01/01 to 31/12  
Opening hours daily .  
Closed exceptionally on January 1st and  
December 25th.*



# Hotels 4\* Rhone Valley

## VILLA ELISA. M

3 rue Jean Beaussier - 07200 Aubenas

★★★★



### Hotel

Villa Elisa. M is a "hôtel de charme" with 8 spacious rooms including 2 stunning suites near Aubenas old town between the Ardèche mountain and gorges.

### RATES (indication)

Double room: 115 to 190 €  
Single room: 95 to 170 €  
Room sleeping 4: 190 to 250 €  
Suite: 190 to 220 €  
Breakfast: 15 €.

### 8 rooms, 19 people

☎ 06 72 78 95 22  
✉ contact@elisa-m.com  
🌐 www.villa-elisa-m.com

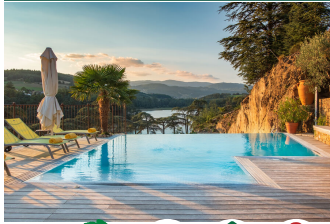


All year round.

## INN OF THE LAKE

Lac du Ternay - 07100 Saint-Marcel-Hès-Annonay

★★★★



### Hotel - restaurant

Top hotel on the banks of Le Ternay Lake. Warm and friendly atmosphere. "A lakeside wellness haven..." The restaurant has been "Maître Restaurateur" approved.

### RATES (indication)

Double room: 129 to 174 €  
Single room: 89 to 104 €  
Breakfast: from 14 €  
Supplementary payment for pets: from 10 €.

### 12 rooms, 25 people

☎ +33 (0)4 75 67 12 03  
✉ contact@aubergedulac.fr  
🌐 www.aubergedulac.fr



From 29/01 to 31/12/2022.

## HÔTEL DE LA VILLEON

2 Rue Davity - 07300 Tournon-sur-Rhône

★★★★



### Hotel

18th century listed 4\* luxury hotel in Tournon-sur-Rhône in the Ardèche (07) 50 mins south of Lyon in the heart of the Hermitage Tournonais vineyards. Member of the "Esprit de France" hotel and château collection" (www.espritdefrance.com).

### RATES (indication)

Double room: 105 to 254 €  
Suite: 205 to 364 €  
Breakfast: 20 €  
Supplementary payment for pets: 12 €

### 16 rooms, 34 people

☎ 04 75 06 97 50  
✉ contact@hoteldelavilleon.com  
🌐 www.hoteldelavilleon.com



From 01/01 to 31/12/2022.

## DOMAINE DE SAINT CLAIR SPA & GOLF

Route du Golf "Le Pelou" - 07430 Saint-Clair

★★★★



### Hotel - restaurant

Domaine de Saint Clair is an amazing spot in the middle of an 18-hole golf course: 54 modern rooms and apartments conceived for your comfort. There are also a 1 star restaurant, a bar and a wellness centre.

### RATES (indication)

Double room: 99 to 195 €  
Breakfast: from 16 €  
Supplementary payment for pets: 10 €.

### 54 rooms, 120 people

☎ +33 (0)4 75 67 01 00  
✉ reservation@domainestclair.fr  
🌐 www.domainestclair.fr

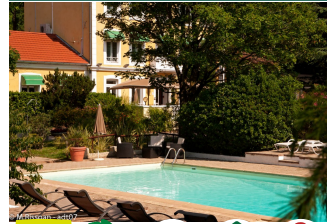


From 01/01 to 31/12/2022.

## HÔTEL-RESTAURANT LE CÈDRE DE SOYONS

670 route de Nîmes - Route nationale 86 - 07130 Soyons

★★★★



### Hotel - restaurant

A 24-room hotel whose interior has been redecorated to match the trends. Function rooms, pool, tennis courts and meeting room.

### RATES (indication)

Double room: 98 €  
Single room: 98 €  
Breakfast: 11 €.

### 24 rooms, 52 people

☎ 04 75 60 83 55  
☎ 06 65 27 36 26  
✉ contact@lecedredesoyons.fr  
🌐 lecedredesoyons.fr

From 01/01 to 30/06, every Tuesday, Wednesday, Thursday, Friday and Saturday.

From 01/07 to 31/08, every Monday, Tuesday, Wednesday, Thursday, Friday and Saturday.

From 01/09 to 31/12, every Tuesday, Wednesday, Thursday, Friday and Saturday.



## HÔTEL LA BASTIDE D'IRIS

280, Route de Barjac - 07150 Vagnas

★★★★



### Hotel

An elegant 4-star hotel with 21 air-conditioned rooms and suites, with a terrace and private garden, heated outdoor swimming pool and balneo pool, and a shaded relaxation area. Our whole team are at hand to ensure your stay in Ardèche is unforgettable.

### RATES (indication)

Double room: from 102 €  
Triple room: from 177 €  
Room sleeping 4: from 205 €  
Breakfast: 16 €.

### 21 rooms, 52 people

☎ 04 75 88 44 77  
✉ bienvenue@labastidediris.com  
🌐 www.labastidediris.com



From 21/01 to 17/12/2022.

**HÔTEL VILLA WALBAUM\*\*\*\***

615 Route des Estrades - 07150 Vallon-Pont-d'Arc

**Hotel**

RATES (indication)

Free entry for children &lt; 2 years.

☎ 04 75 88 04 04

@ contact@villawalbaum.com

🌐 www.domainewalbaum.com



From 25/02 to 20/12/2022.

**HÔTEL CHÂTEAU LES OLIVIERS DE SALETTES**

Château de Salettes - 1205 route du Château - 26450 Charols

**Hotel - restaurant**

The Château Les Oliviers de Salettes is a charming hotel and restaurant in the Drôme Provençale, with outdoor pool and a wellness center. Its site is of exceptional beauty, a place full of history, warm and tranquil at the same time. A Château where everyone feels home in a relaxed and friendly atmosphere. Ideal for a romantic stay in the South of the France between luxury and relaxation.

**77 people**

☎ 04 75 00 19 30

@ contact@chateau-lesoliviers.com

🌐 www.chateau-lesoliviers.com

RATES (indication)



From 01/01 to 31/12/2022.

**HÔTEL FERME CHAPOUTON**

200 route de Montélimar - 26230 Grignan

**Hotel - restaurant**

A place, a history and an exceptional view. Built in 1760 at the edge of the village of Grignan, the Ferme Chapouton offers 13 rooms of great comfort as well as a bistro gourmand. A charming stay in the old holiday home of Nicolas de Staël.

**30 people**

☎ 04 75 00 01 01

@ info@chapouton.com

🌐 www.chapouton.com

RATES (indication)

Double room: 79 to 245 €

Half-board: from 50 €

Breakfast: 20 €

Supplementary payment for pets: 10 €.



From 01/01 to 31/12/2022.

**HÔTEL HELVIE**

5, Avenue Claude Expilly - 07600 Vals-les-Bains

**27 rooms, 51 people**

☎ 04 75 94 65 85

@ courriel@hotel-helvie.com

🌐 www.hotel-helvie.com

**Hotel - restaurant**

Stylish decor, attention to detail and elegant rooms, pool to cool off in and Le Vivarais restaurant for delicious and inventive dishes. Come here to chill out, feel good and eat well.

RATES (indication)

Double room: from 110 €

Breakfast: 18 to 21 €.



All year round.

**HÔTEL-RESTAURANT MANOIR LE ROURE**

4312 Route de Saint Paul - 26780 Châteauneuf-du-Rhône

**26 people**

☎ 04 75 90 93 64

@ reception@manoirleroure.com

🌐 manoirleroure.com/

**Hotel - restaurant**

Book your stay in Drôme provençale in the charming hotel of the Manoir Le Roure. Your nights will be sweet in one of the 10 rooms that we put at your disposal. We also offer 3 chalets with private spa on the terrace offering stunning views of the park. Each room or chalet has its own atmosphere, so there is something for everyone!

RATES (indication)

Double room: from 139 €.

**HÔTEL LE CLAIR DE LA PLUME**

2 place du Mail - 26230 Grignan

**43 people**

☎ 04 75 91 81 30

@ info@clairplume.com

🌐 www.clairplume.com

**Hotel - restaurant**

In the historic village of Grignan, the Clair de Plume invites you to stay away from the noise of the world. Bedrooms with ancient furniture, gourmet 1\*Michelin restaurant, Bistro Bib gourmand, Mediterranean garden & organic pool, boutique.

RATES (indication)

Double room: 89 to 395 €

Suite: 299 to 495 €

Breakfast: from 25 €

Supplementary payment for pets: from 20 €.



From 01/01 to 31/12/2022.



**HÔTEL LE TRÉSOR DES TEMPLIERS** ★★★★★

245 route de Donzère - 26780 Malataverne

**Hotel****RATES (indication)**

Double room: 144 to 250 €

Half-board: 232 to 338 €

Breakfast: 18 €

Supplementary payment for pets:  
15 €.

Tax not included.

**16 people**

☎ 09 61 23 13 68

☎ 06 07 29 40 90

@ contact@letresordestempliers.com

🌐 www.letresordestempliers.com



From 01/01 to 31/12.

**HÔTEL-RESTAURANT DOMAINE DU COLOMBIER** ★★★★★

270 chemin de Malombre - 26780 Malataverne

**Hotel - restaurant**

Farmhouse dating from the 14th century in a 4-hectare park. A few minutes from Montélimar. Pool. Bedrooms with AC, all renovated.

**RATES (indication)**

Double room: 138 to 320 €

Twin room: 138 to 320 €

Single room: 138 to 320 €

Triple room: 182 to 320 €

Suite: 308 to 440 €

Breakfast: 18 to 23 €

Supplementary payment for pets:  
20 €.**24 rooms**

☎ 04 75 90 86 86

@ reservation@domaine-colombier.com

🌐 www.domaine-colombier.com



From 09/02 to 31/12.

**HÔTEL IBIS STYLES** ★★★★★

1 bis avenue Saint Martin - 26200 Montélimar

**Hotel**

The hotel is situated in the town centre of Montélimar, the nougat capital, only 1 km from the railway station. From here, the finest tourist sites of the area, such as the Ardèche gorges and the Caverne du Pont d'Arc can be easily reached.

**RATES (indication)**

Double room: 76 to 180 €

Twin room: 76 to 180 €

Single room: 76 to 180 €

Suite: 130 to 230 €

Breakfast: 10 €

**158 people**

☎ 04 75 46 46 46

@ h9423@accor.com

🌐 www.accorhotels.com/fr/hotel-9423-ibis-styles-montelimar-centre/index.shtml



From 01/01 to 31/12.

**HÔTEL CHÂTEAU DE ROCHEGUEDE** ★★★★★

Place du Château - 26790 Rochebelle

**Hotel - restaurant**

Beautiful stronghold dating from the 11th century, transformed during the Renaissance, overlooking the vineyards of Côtes du Rhône.

**RATES (indication)**

From 15/12/2021 to 31/03/2022

Double room: from 149 €.

From 01/04 to 31/12/2022

Double room: 160 to 589 €

Twin room: 160 to 589 €

Single room: 140 to 589 €

Triple room: 190 to 639 €

**55 people**

☎ 04 75 97 21 10

@ reservations@chateauderochebelle.com

🌐 www.chateauderochebelle.com



From 15/12/2021 to 31/12/2022, every Monday, Tuesday, Wednesday, Thursday, Friday and Saturday.

**HÔTEL L'ORÉE DU PARC** ★★★★★

6 avenue Gambetta - 26100 Romans-sur-Isère

**Hotel**

Located on the borders of the Vercors and the "Drôme des Collines" regions, near the Rhone Valley and on the road to the Alps, L'Orée du Parc is a charming 4-star hotel in the immediate vicinity of the historic city center of Romans-sur-Isère.

**RATES (indication)**

Double room: 99 to 137 €

Twin room: 116 to 134 €

Single room: 92 to 127 €

Triple room: 145 to 154 €

Room sleeping 4: 161 to 164 €

**16 rooms, 38 people**

☎ 04 75 70 26 12

@ contact@hotel-oreeparc.com

🌐 www.hotel-oreeparc.com



All year round.

**HOTEL-RESTAURANT VILLA AUGUSTA** ★★★★★

14 rue du Serre Blanc - 26130 Saint-Paul-Trois-Châteaux

**Hotel - restaurant**Situated in the heart of Drôme Provençale, "Villa Augusta" in an old Mansion on a 3000m<sup>2</sup>-park, planted with trees and with a swimming pool. The Restaurant "David Mollicone" invites you to travel round the world with all the delicious flavours...**RATES (indication)**

Breakfast: 9 to 18 €.

Tax not included.

**46 people**

☎ 04 75 97 29 29

@ events@villaaugusta.fr

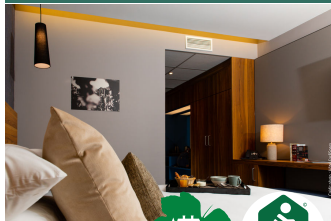
🌐 www.villaaugusta.fr



All year round.

**HÔTEL & SPA FAC & SPERA** ★★★★★

1 avenue du Docteur Paul Durand - 26600 Tain-l'Hermitage

**Hotel - restaurant**

Fac & Spera Hotel & Spa is the translation of an art of living open to all. An invitation to discover what the Rhône Valley is, the land of choice for legendary wines. It's the perfect place to relax and feel at home.

**110 people**

☎ 04 75 08 65 00

@ contact@hotel.facetspera.fr

🌐 www.facetspera.fr

**RATES (indication)**

Double room: 110 to 156 €

Triple room: 120 to 188 €

Family room: 131 to 166 €

Suite: 156 to 263 €

Breakfast: 14 €

Supplementary payment for pets:



From 01/01 to 31/12/2022.

**ATRIUM HÔTEL** ★★★★★

20 rue Jean-Louis Barrault - 26000 Valence

**Hotel**

The Atrium Hote is located in a quiet street. It is close to the bus station, the "Valence City" railway station, the Exhibition Centre of Valence, and the historic centre with shopping, cinemas and theatres...

**134 people**

☎ 04 75 55 53 62

@ info@atrium-hotel.fr

🌐 www.atrium-hotel.fr

**RATES (indication)**

From 01/01 to 31/12/2021

Double room: 82 to 122 €

Twin room: 82 to 122 €

Single room: 82 to 122 €

Breakfast: 15 €

Supplementary payment for pets:



From 01/01 to 31/12.

**HÔTEL DE FRANCE** ★★★★★

16 boulevard Général de Gaulle - 26000 Valence

**Hotel**

Our Hotel has the perfect situation in the heart of the city: you can walk to the restaurants, cultural sites, shops and nice areas of the city.

**103 people**

☎ 04 75 43 00 87

@ info@hotel-valence.com

🌐 www.hotel-valence.com

**RATES (indication)**

Double room: 98 to 200 €

Twin room: from 200 €

Single room: 85 to 150 €

Triple room: 121 to 184 €

Room sleeping 4: 148 to 271 €

Suite: 169 to 293 €

Breakfast: 16 €

Supplementary payment for pets:



From 01/01 to 31/12/2022.

**HÔTEL-RESTAURANT BEST WESTERN PLUS CLOS SYRAH** ★★★★★

Boulevard Pierre Tézier - 26000 Valence

**Hotel - restaurant****RATES (indication)**

Double room: from 115 €

Twin room: from 115 €

Single room: from 115 €

Breakfast: 16 €

Supplementary payment for pets: 10 €.

**96 people**

☎ 04 75 55 52 52

@ info@clos-syrah.com

🌐 www.clos-syrah.fr

Tax not included.



From 01/01 to 31/12.

**HÔTEL-RESTAURANT MERCURE VALENCE SUD** ★★★★★

2 rue Chantecourial - 26000 Valence

**Hotel - restaurant****RATES (indication)**

Group rate available for > 15 people.

**150 people**

☎ 04 75 40 80 70

@ h6398-re@accor.com

🌐 www.accorhotels.com/fr/hotel-6398-hotel-mercure-valence-sud/index.shtml



From 01/01 to 31/12.

**HÔTEL-RESTAURANT NOVOTEL VALENCE SUD** ★★★★★

217 avenue de Provence - 26000 Valence

**Hotel - restaurant****RATES (indication)**

Double room: 99 to 250 €

Single room: 99 to 250 €

Suite: 159 to 310 €

Breakfast: 8 to 16.50 €

Supplementary payment for pets: 15 €.

**424 people**

☎ 04 75 82 09 09

@ h0455@accor.com

🌐 all.accor.com/hotel/0455/index.fr.shtml?dateIn=&nights=&compositions=2&stayplus=false#origin=novotel

Group rate available for > 10 people.



From 01/01 to 31/12/2022.

**VICTORIA HOTEL**

37 rue Denis Papin - 26000 Valence

★★★★

**Hotel**

Boutique Hotel in the heart of Valence with all the criteria of a luxury hotel.

**RATES (indication)**

Double room: 130 to 160 €  
 Single room: 130 to 160 €  
 Breakfast: 15 €  
 Supplementary payment for pets: 10 €  
 Car park: 7 €.

Tax not included.

**24 people**

☎ 04 28 99 01 60

@ contact@hotel-victoria-valence.fr

🌐 www.hotel-victoria-valence.fr

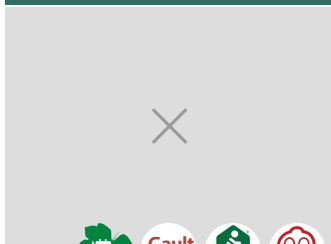


From 01/01 to 31/12.

**THE PYRAMID**

14 boulevard Fernand Point - 38200 Vienne

★★★★

**Hotel - restaurant**

This wonderful and magic hotel labelled Relais & Château is linked to its great head-chefs' history from Fernand Point to Patrick Henriroux. Located just 30 kilometres from Lyon, la Pyramide is certainly the ideal place for a break on the way to or back from the French Riviera.

**RATES (indication)**

Double room: 160 to 300 €  
 Single room: 160 to 300 €  
 Suite: 350 to 460 €

From 27/12/2018 to 04/02/2019, daily.  
 Closed exceptionally on 31/12/2018.

From 07/03 to 31/12/2019, daily.  
 Closed exceptionally on May 1st.

**23 ch., 52 pers.**

☎ 04 74 53 01 96

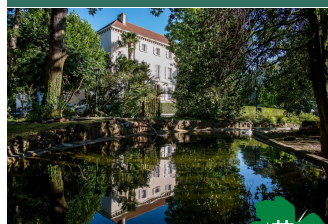
@ pyramide@relaischateaux.com

🌐 www.lapyramide.com

**DOMAINE DE CLAIREFONTAINE - LES JARDINS DE CLAIREFONTAINE**

105 Chemin des Fontanettes - 38121 Chonas-l'Amballan

★★★★

**Hotel - restaurant**

The Jardins de Clairefontaine are designed in the style of a traditional Dauphiné nut-drying building. This charming house with 18 bedrooms is just a few yards away from the manor house and in the green setting of the estate park.

**18 rooms, 36 people**

☎ 04 74 58 81 52

@ contact@clairefontaine38.fr

🌐 www.domaine-de-clairefontaine.fr

**RATES (indication)**

Double room: 140 to 198 €  
 Double room with breakfast: 172 to 238 €  
 Single room: 140 to 198 €  
 Breakfast: 16 to 20 €  
 Supplementary payment for pets:

Fermeture annuelle de mi-décembre à mi-janvier.  
 Réouverture prévue le 19 avril 2021

**BEAU RIVAGE HOTEL**

2 rue du Beau Rivage - 69420 Condrieu

★★★★

**Hotel - restaurant**

The natural light and appeal of the Rhone riverbanks, the terraces reaching to the water's edge, the magic of a secret garden... All sensations making the Beau Rivage Hotel a haven of peace for a stay outside time.

**29 rooms, 70 people**

☎ 04 74 56 82 82

@ infos@hotel-beaurivage.com

🌐 www.hotel-beaurivage.com

**RATES (indication)**

Double room: 115 to 190 €  
 Suite: 225 to 340 €  
 Breakfast: 19 €  
 Supplementary payment for pets: 12 €.

From 01/01 to 31/12  
 Opening hours daily.  
 Closed exceptionally on January 1st and  
 December 25th.

# Hotels 3\* - Rhône Valley

## IBIS HÔTEL

42 Route de Montélimar - 07200 Aubenas

★★★



### Hotel - restaurant

South exit of Aubenas on the road to Montélimar. Lovely bar lounge and breakfast room with a beautiful framework. Restaurant serving coffee, pizza, pasta, local food. Wonderful terrace, swimming pool and spaces.

**63 rooms, 142 people**

☎ 04 75 35 44 45

@ h1637@accor.com

🌐 www.accorhotels.com

### RATES (indication)

Double room: 83 to 135 €  
Twin room: 83 to 135 €  
Single room: 83 to 135 €  
Triple room: 93 to 145 €  
Room sleeping 4: 113 to 165 €  
Half-board: 105 to 157 €



All year round.

## LE RELAIS DE LA VIGNASSE - HÔTEL DE VACANCES

4 chemin du Malabrich - Maisonneuve - 07230 Chandolas

★★★



### Hotel - restaurant

Small charming and quiet hotel (12 rooms).

A warm welcome, friendliness, relaxed environment, large swimming pool, panoramic terrass and gourmet

table in the candle-light reserved for hotel guests.

Everything will be done to ensure your holidays in southern Ardeche are a great success.

**12 rooms, 30 people**

☎ 04 75 39 31 91

@ info@hotel-lavignasse.com

🌐 www.hotel-lavignasse.com

### RATES (indication)

Double room: 94 to 149 €  
Double room with breakfast: 107 to



From 31/03 to 14/11/2022 between 8 am and 11 pm.

## HOTEL SIESTA

1545 Rue de la République - 07430 Davézieux

★★★



### Hotel

Small hotel complex with swimming pool, tennis courts, table tennis, pool table. 12km from the main roads, near Annonay and its golf. Family-run hotel with restaurants nearby. Bike-friendly approval.

**45 rooms, 124 people**

☎ +33 (0)4 75 33 07 90

@ contact@hotel-la-siesta.eu

🌐 www.hotel-la-siesta.eu

### RATES (indication)

Double room: 64 to 100 €  
Breakfast: 11.50 €  
Supplementary payment for pets: 5 €  
Tou

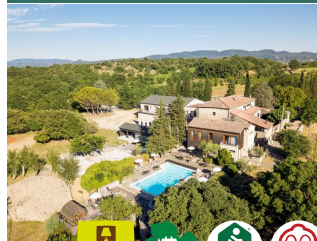
From 02/01 to 16/12/2022  
Opening hours on Monday and Saturday between 7 am and 9.30 pm. On Tuesday, Wednesday, Thursday and Friday between 6 am and 9.30 pm. On Sunday between 7 am and 2 pm and between 5 pm and 9.30 pm.



## AUBERGE LES MURETS HOTEL

6 route des Martins - Lengarnayre - 07230 Chandolas

★★★



### Hotel - restaurant

18th century silkworm farm turned lovely and peaceful "hôtel de charme". Good food. Near the tourist attractions. 10 fully renovated rooms and 6 brand new rooms, heated pool with jacuzzi, sauna, solarium.

**16 rooms, 32 people**

☎ 04 75 39 08 32

@ info@aubergelesmurets.com

🌐 www.aubergelesmurets.com

### RATES (indication)

Double room: from 105 €  
Double room with breakfast: from 133 €  
Twin room: from 105 €  
Room sleeping 4: from 130 €  
Chambre familiale: 130 €



From 18/01 to 31/12.

## HÔTEL-RESTAURANT LE CARRÉ D'ALÉTHIUS

4 rue Paul Bertois - 07800 Charmes-sur-Rhône

★★★



### Hotel - restaurant

Experience Olivier Samin's gourmet dishes and quality hospitality in a wonderful setting at Le Carré d'Aléthius.

### RATES (indication)

Double room: 75 to 105 €  
Triple room: 125 €  
Suite: 125 €  
Breakfast: 12 €  
Supplementary payment for pets: 10 €.

☎ 04 75 78 30 52

@ lecarredalethius@orange.fr

🌐 www.lecarredalethius.com

Free entry for press.



From 01/01 to 31/12.  
Closed on Sunday.

## SOWELL HÔTELS ARDÈCHE

Domaine du Rouret - 07120 Grospierrres

★★★



### Hotel - restaurant

### RATES (indication)

Free entry for children < 3 years.

Tax not included.

☎ 04 90 18 49 10

☎ 0826 300 250

@ reservation@sowell.com

🌐 www.sowell.fr/hotel/lardeche/



From 21/05 to 31/10/2021.

**LES CÈDRES HOTEL** ★★

164 Quartier la Glacière - 07260 Joyeuse

**Hotel - restaurant**

Hotel located 30 minutes from Pont d'Arc Valley by the Beaume River with a heated indoor pool in a village. Regional dishes. Approved as hiker, bike, family and fishing friendly. Qualité Tourisme approval.

**43 rooms, 96 people**

☎ 04 75 39 40 60

@ hotel.cedres@orange.fr

🌐 www.hotelcedres.com

**RATES (indication)**

Double room: 78 to 100 €

Twin room: 95 to 105 €

Single room: 78 to 105 €

Duplex: 125 to 142 €

Half-board: 14.50 to 32.50 €

Breakfast: 10.50 €

*From 11/04 to 30/10/2022.***HÔTEL DOMAINE DE CHAUSSY** ★★

Quartier le Petit Chaussy - 07150 Lagorce

**Hotel - restaurant**

Hotel with bath, internet, balcony, safe, hairdryer and fridge near Pont d'Arc and 1.5km from Ruoms in the heart of a holiday village with heated pools. A lovely relaxing setting and heaven for nature lovers.

**40 rooms, 93 people**

☎ 04 75 93 99 66

@ accchaussy@tohapi.fr

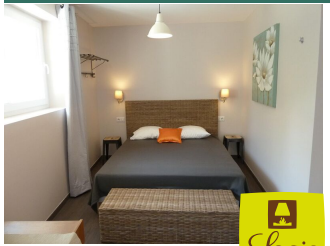
🌐 www.hotel-ardeche-rooms.com/

**RATES (indication)**

Paying

*From 07/04 to 30/09.***HÔTEL AUBERGE DU VIEUX LANAS** ★★

Place du Village - 07200 Lanas

**Hotel - restaurant**

Hôtel Auberge du Vieux Lanas is open all year round in the little medieval village of Lanas near Voguè. A few miles from Aubenas and a dozen from Pont d'Arc Valley and the famous Ardèche Gorges.

**7 rooms, 16 people**

☎ 04 75 37 77 09

@ auberge.lanas@gmail.com

🌐 www.vieux-lanas.fr

**RATES (indication)**

From 08/01 to 09/02/2018

Double room: 65 to 85 €

Single room: 57 to 67 €

Triple room: 72 to 82 €

*From 01/01 to 28/02/2022.  
Closed Friday, Saturday and Sunday.**From 01/03 to 15/10/2022, daily.***HÔTEL DOMAINE DE L'EAU VIVE** ★★

758 Chemin du Roubreau - 07110 Largentière

**Hotel - restaurant**

The hotel is in a former silk mill in a leafy setting: you'll love its peace, nature and tranquillity. Premium rooms and suites in different sizes.

**19 rooms, 50 people**

☎ 04 75 89 20 53

@ domaine.eauvive@orange.fr

🌐 www.domaineeauvive.com

**RATES (indication)**From 01/04 to 31/05/2018  
(Medium season)

Double room: 79 to 135 €

Triple room: 125 to 159 €

Room sleeping 4: 125 to 159 €

*From 01/04 to 15/11.***IBIS HÔTEL** ★★

ZA Rhône Vallée - RD 104 - 07250 Le Pouzin

**Hotel - restaurant**

The Ibis Loriol Le Pouzin Hotel brings together nature and modern architecture. It opened in 2010 in the perfect location at the foot of the Ardèche mountains, on the banks of the Rhône by the Via Rhône cycle path (from Lake Geneva to the Med).

**41 rooms, 82 people**

☎ 04 75 60 00 00

@ H7378@accor.com

🌐 www.accorhotels.com

**RATES (indication)**

Double room: 69 to 150 €

Breakfast: 10.50 €

Supplementary payment for pets: 5 €.

*All year round.***HÔTEL-RESTAURANT LES CHÂTAIGNIERS** ★★

Cote du Baron - 07000 Privas

**Hotel - restaurant**

Peaceful setting just a 2 minute drive from Privas town centre. Hotel with 79 air-conditioned double or twin rooms. Bathroom, shower, toilet, TV, direct phone line, free Wi-Fi and swimming pool.

**79 rooms, 174 people**

☎ 04 75 66 39 60

@ reservations@leschataigniers.fr

🌐 www.leschataigniers.fr

**RATES (indication)**

Double room: 55 to 74 €

Twin room: 60 to 81 €

Single room: 50 to 69 €

*From 01/01 to 31/12/2022.*

**INTER-HÔTEL MÉDIÉVAL** ★★

Rue de l'averse - 07400 Rochemaure

**Hotel**

In the centre of the village of Rochemaure, at 5km from Montélimar, Le Teil and the power station of Cruas; at 30min from Grigan castle. Wonderful views of the castle. Air-conditioned hotel with all mod cons.

**34 rooms, 71 people**

☎ 04 75 49 07 05

@ contact-medieval@orange.fr

🌐 www.hotel-medieval.fr

**RATES (indication)**

Double room: 77 to 115 € (Triple rooms available)  
Single room: Bed&breakfast: from €79 per person  
Breakfast: 11 €.



From 09/01 to 17/12.

**HÔTEL LE CHÊNE VERT** ★★

10 impasse Rouchas - 07110 Rocher

**Hotel - restaurant**

Former Post House, Hotel Le Chêne Vert welcomes you. In the heart of Southern Ardèche, you will appreciate the calm and the comfort of the hotel, in the gastronomic restaurant of regional soil evolving with the seasons.

**25 rooms, 56 people**

☎ 04 75 88 34 02

@ contact@hotellechenevert.com

🌐 www.hotellechenevert.com

**RATES (indication)**

Double room: 80 to 110 €  
Triple room: 110 to 125 €  
Room sleeping 4: 135 to 145 €  
Half-board: 72 to 90 €  
Breakfast: 12 €  
Supplementary payment for pets: 7



From 10/04 to 31/10.

**MAS DE BEAUME HOTEL** ★★

lieu dit Baume - lieu dit estourels - 280, chemin de baume - 07260 Rosières

**Hotel - restaurant**

Le Mas de Baume is a fortified 17th century farmhouse deep in the southern Ardèche. The beautiful building, natural pool and private woodland make it the ideal countryside setting to recharge your batteries.

**11 rooms, 27 people**

☎ 04 75 93 76 88

@ hotel-lemasdebaume@orange.fr

🌐 mas-de-baume.com

**RATES (indication)**

Double room: 90 to 205 €  
Suite: 130 to 205 €  
Breakfast: from 14 €  
Group rate half-board/person: from 105 €  
Tarif groupe Pension complète /



From 16/04 to 07/11.

**HÔTEL SAVEL** ★★

38 rue des Brasseries - 07120 Ruoms

**Hotel - restaurant**

19th century manor house in a leafy park on the banks of a river.

**RATES (indication)**

Double room: 85 to 130 €.

**16 rooms, 36 people**

☎ 04 75 39 60 02

@ accueil@hotel-savel.com

🌐 www.hotel-savel.com/



From 01/03 to 31/10/2022, daily.

From 01/12/2022 to 01/01/2023, daily.

**HÔTEL LE FÉLICIEN** ★★

Rue de Bard - 07410 Saint-Félicien

**Hotel - restaurant**

Housed in the former Ecole des Frères, the hotel retains all the charm of the homes of its time. It is ideally located at the beginning of the excursions by bicycle, VTT or pedestrian. It has a wellness area, a seminar room and a restaurant.

**17 rooms, 53 people**

☎ 04 75 09 14 73

☎ 07 70 05 08 67

@ contact@hotel-le-felicien.fr

🌐 www.hotel-le-felicien.fr

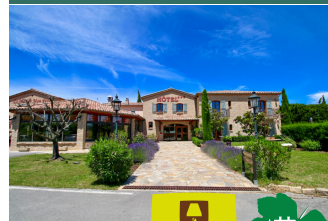
Hotel with 17 rooms 53 beds  
Restaurant with 40 seats and 50 seats on the terrace.  
Bar.  
Spa including Hammam, sauna, jacuzzi.  
Free wifi access throughout the hotel



From 01/01 to 31/12/2022, daily.

**HÔTEL LE MAS DE MON PÈRE** ★★

Quartier Argence - RN 102 - 07580 Saint-Jean-le-Centenier

**Hotel - restaurant**

The stone-built Le Mas de Mon Père oozes premium comfort in 1ha of enclosed grounds. We'll give you a warm, family welcome and introduce you to the southern Ardèche's treasures.

**RATES (indication)**

Single/ Double room: 72 to 99 €  
Triple room: 99 to 129 €  
Half-board: 67 to 82 €  
Special pack overnight for

**13 rooms, 31 people**

☎ 04 75 36 71 23

@ contact@lemasdemonpere.com

🌐 www.lemasdemonpere.com

Open all year round  
(closed in 2022, from January 3rd to 17th)

**HÔTEL LES PETITS OREILLERS** ★★

60 Rue du Candelas au Sablas - 07700 Saint-Martin-d'Ardèche

**Hotel**

Fully renovated family-run hotel with 20 rooms in a quiet interior courtyard in the heart of a village. Peace and quiet and a warm welcome.

**RATES (indication)**

Double room: 84 to 98 €

Twin room: 92 to 98 €

Triple room: 106 €

Room sleeping 4: 125 €

**20 rooms, 42 people**

☎ 04 75 04 87 85

☎ 06 84 12 65 80

@ lespetitsoreillers@orange.fr

🌐 lespetitsoreillers.jimdo.com



From 01/04 to 27/11/2022.

**LA MÈRE BIQUETTE** ★★

3055 route de Sceautes - 07580 Saint-Pons

**Hotel - restaurant**

Old farm renovated in basalt stones. Exceptional view on the preserved valley of St Pons, in a frame of peace and greenery. Comfortable rooms (private terraces, balneo,...) and familial and local catering.

**RATES (indication)**

Single or double room : 68 to 120 €

Half-board : 34 € /pers. (dinner + breakfast)

Breakfast : 11 €

**15 rooms, 36 people**

☎ 04 75 36 72 61

@ info@merebiquette.fr

🌐 www.merebiquette.fr



Open in 2022, from February 1st to December 16th.

**HÔTEL LA BASTIDE DE SANILHAC** ★★

505 impasse La Bastide - 07110 Sanilhac

**Hotel - restaurant**

La Bastide de Sanilhac used to be a feudal residence on the south side of the majestic Le Tanargue hill. It towers over vineyards and chestnut trees in the Lower Vivarais region from its 450m high setting.

**RATES (indication)**

Double room: 89 to 119 €

Double room with breakfast: 115 to 145 €

Single room: 89 to 119 €

Triple room: 125 to 139 €

Room sleeping 4: 130 to 155 €

**22 rooms, 67 people**

☎ 04 75 39 28 27

@ contact@hotel-bastide-sanilhac.com

🌐 www.hotel-bastide-sanilhac.com



From 10/04 to 16/10.

**HÔTEL DOMAINE DU CROS D'AUZON** ★★

805 chemin de l'Auzon - Vogüé - 07200 Saint-Maurice-d'Ardèche

**Hotel - restaurant**

Domaine du Cros d'Auzon puts all its know-how at the service of those who come to seek a holiday resort of quality in a preserved environment. Since the creation, we have been carrying out a unique experience in France because, beyond our job of welcoming tourists, we have an affirmed social vocation

**RATES (indication)**

Free entry for children < 3 years.  
Group rate available for > 21 people.

**34 rooms, 104 people**

☎ 04 75 37 75 86

@ reservation@croздаuzon.fr

🌐 www.domaine-cros-auzon.com



From 09/04 to 30/10/2022.

**HÔTEL AUBERGE LA TOUR DE BRISON** ★★

300 chemin La Chapelette - 07110 Sanilhac

**Hotel - restaurant**

Hotel in a 1620 building that's been welcoming guests since 1902. Sanilhac is both in the Cévennes and Vivarais areas surrounded by two stunning rivers. Car park. Duplex rooms with views. Chromotherapy spa.

**RATES (indication)**

Double room: 80 to 140 €.

Free entry for children &lt; 2 years.

**14 rooms, 41 people**

☎ 04 75 39 29 00

@ belin.c@wanadoo.fr

🌐 www.belinbrison.com



From 01/04 to 02/11.

**HÔTEL SCHAEFFER** ★★

34 Quai Jules Roche - 07340 Serrières

**Hotel - restaurant**

Welcoming hotel with restaurant near the Rhône river. Bike-friendly approval.

**RATES (indication)**

Double room: from 82 €

Breakfast: from 12 €

Supplementary payment for pets: from 15 €.

**15 rooms, 32 people**

☎ +33 (0)4 75 34 00 07

@ info@hotel-schaeffer.com

🌐 www.hotel-schaeffer.com



From 16/01 to 31/12/2022.

**THE SMALL ROCHE**

115 Quai Jules Roche - 07340 Serrières

**Hotel**

Charming little hotel with 8 rooms on the edge of the Ardèche (close to the RN86 road and A7 motorway) in a village on the banks of the Rhône.

**RATES (indication)**

Double room: from 70 €  
Breakfast: 12 €.

**8 rooms, 17 people**

☎ 04 75 34 01 02

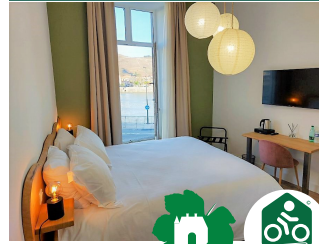
@ lepetitroche07@gmail.com



From 01/01 to 31/12/2022.  
Closed on Monday.

**HÔTEL LE CHÂTEAU**

12 Quai Marc Seguin - 07300 Tournon-sur-Rhône

**Hotel**

This old building of 1836 on the edge of the Rhone river with a unique view on the slopes of the Hermitage. Located 3 km from the exit N ° 13 (A7). At the foot of St. Joseph and facing the ViaRhôna cycle path, the hotel is right next to the castle-museum of Tournon.

**20 rooms, 50 people**

☎ 04 75 07 66 94

@ hotel.le.chateau.tournon@gmail.com

www.hotel-le-chateau.fr/

**RATES (indication)**

From 03/01 to 30/12/2021  
Double room: 83 €  
Twin room: 83 €  
Single room: 73 €  
Triple room: 93 to 113 €



From 03/01 to 30/12/2022.

**HÔTEL LES AMANDIERS**

13 av. de Nîmes - 07300 Tournon-sur-Rhône

**Hotel**

Modern hotel, comfortable, air-conditioned rooms, friendly reception. Free Wi-Fi.

**RATES (indication)**

Double room: 81 to 99 €  
Breakfast: from 9 €.

**25 rooms, 50 people**

☎ 04 75 07 24 10

@ info@hotel-amandiers.com

www.hotel-amandiers.com

Tourist tax : 0.90€ per person (over 18 years old) and per night.

Tax not included.



From 04/01 to 17/12/2022.

**HÔTEL-RESTAURANT AZALÉES**

6 Avenue de la Gare - 07300 Tournon-sur-Rhône

**Hotel - restaurant**

The hotel provides its charming setting for your holiday and business trip in the famous St Joseph vineyard. Feast on the chef's traditional dishes made using produce from the region and garden.

**38 rooms, 85 people**

☎ 04 75 08 05 23

@ contact@hotel-azalees.com

www.hotel-azalees.com

**RATES (indication)**

From 14/01 to 21/12/2021  
Double room: 73 to 96 €  
Single room: 83 €  
Triple room: 91 €  
Half-board: 99 to 142 €  
Breakfast: 10 €.



All year round.

**LE TANARGUE HOTEL**

le village - 07110 Valgorge

**Hotel - restaurant**

The hotel Le Tanargue\*\*\* is located at the foot of Mount Tanargue, paradise for hikers, bicycles, fishermen and all lovers of nature, biodiversity, fauna and flora. With 25 comfortable rooms, its large park, bar, cellar, terraces and restaurant Le Tanargue offers many possibilities for a successful and exotic stay.

**RATES (indication)**

Double room: 60 to 90 €  
Double room with breakfast: 71 to 101 €

**25 rooms, 53 people**

☎ 04 75 88 98 98

@ info@hotel-le-tanargue.com

www.hotel-le-tanargue.com



From 13/02 to 15/12.

**BERNERON HOTEL**

6, rue du Miarou - 07150 Vallon-Pont-d'Arc

**Hotel - restaurant****RATES (indication)**

Pour nos formules et nos tarifs merci de nous contacter.

**25 rooms, 58 people**

☎ 04 75 88 02 12

@ contact@hotel-ardeche.com

www.hotel-ardeche.com



From 15/02 to 30/11/2022.

Cancelled or closed.



**HÔTEL LE BELVÈDÈRE** ★★

Route des Gorges de l'Ardèche - Quartier Rouvière - 07150 Vallon-Pont-d'Arc

**Hotel - restaurant**

The spirit of nature, professionalism, dynamism, enthusiasm...  
A charming hotel with all mod cons, rooms with private spa, just 300 metres from the Pont d'Arc and the river.

☎ 04 75 88 00 02

@ contact@le-belvedere-hotel.com

🌐 www.hotel-ardeche-belvedere.com

RATES (indication)

Group rate available for &gt; 2 people.

Tax not included.



From 25/03 to 22/10/2022.

**HÔTEL RESTAURANT LE CLOS DES BRUYÈRES** ★★

347 Route des Gorges - 07150 Vallon-Pont-d'Arc

**Hotel - restaurant**

Hotel with garden and heated swimming pool 150m from the river and 10 mins from the village. Rooms with air-conditioning, terrace or balcony sleeping 2-5. Relaxation area with sauna and jacuzzi. Secure car park. Restaurant and playground.

**32 rooms, 79 people**

☎ 04 75 37 18 85

@ closdesbruyeres07@gmail.com

🌐 www.closdesbruyeres.fr

RATES (indication)

Paying



From 15/04 to 09/10/2022.

**GRAND HÔTEL DE LYON** ★★

11, Avenue Paul Ribeyre - 07600 Vals-les-Bains

**Hotel - restaurant**

Grand Hôtel de Lyon is ideal for any length of stay near the spa centre and parks. It blends age-old charm and all mod cons in a warm and friendly setting.

RATES (indication)

Double room: 89 to 109 €.

**34 rooms, 70 people**

☎ 04 75 37 43 70

@ info@grandhoteldelyon.fr

🌐 www.grandhoteldelyon.fr



From 05/05 to 01/10/2022.

**GRAND HÔTEL DES BAINS** ★★

3, Montée des Bains - 07600 Vals-les-Bains

**Hotel - restaurant**

The perfect place for a business (seminars welcome) or pleasure in a natural setting in the heart of the spa resort. Restaurant, semi-covered heated swimming pool.

RATES (indication)

Double room: from 70 €

Triple room: from 80 €

Room sleeping 4: from 100 €

Suite: from 110 €

Half-board: 35 €

Full-board: 50 €

Breakfast: from 12 €

Supplementary payment for pets:

**67 rooms, 160 people**

☎ 04 75 37 42 13

@ grand.hotel.des.bains@wanadoo.fr

🌐 www.domainedesbains.com/



From 08/04 to 31/10/2022.

**HÔTEL LE VANSÉEN** ★★

110 Route des Gras - 07140 Les Vans

**Hotel**

5 minutes' walk from the town centre. Peaceful, large private car park.

RATES (indication)

Double room: 78 to 95 €

Room sleeping 4: 145 to 155 €

Breakfast: 12 €

Supplementary payment for pets: 5 €

Tourist taxes: 0.90 €.

**64 people**

☎ 04 75 94 91 88

@ hotellevanseen@gmail.com

🌐 www.hotellevanseen.com/

Tax not included.



All year round.

**MAS DE L'ESPAÏRE HOTEL** ★★

Route d' Alès Bois de Païolive - 07140 Les Vans

**Hotel - restaurant**

Step into the restored and extended silkworm farm in the fragrant calm of the Ardèche garrigue where guests can unwind and relax in the stunning and mysterious Bois de Païolive woodland.

RATES (indication)

Double room: 68 to 136 €

Breakfast: 11 €.

**30 rooms, 65 people**

☎ 04 75 94 95 01

@ espaire@wanadoo.fr

🌐 www.hotel-espaire.fr

Tax not included.



From 28/03 to 31/10.

**LES GALAPIANS** ★★

2 place du Charbonnel - 07110 Vinezac

**Hotel - restaurant**

## RATES (indication)

Double room: from 80 €  
 Single room: from 80 €  
 Half-board: 41 €  
 Full-board: 61 €  
 Breakfast: 12 €.

**5 rooms, 15 people**

☎ 04 75 36 91 66

@ lesgalapians07@gmail.com

🌐 www.lesgalapians.fr/



From 12/01 to 23/12/2022.

**HÔTEL LE RELAIS DU VIVARAIS** ★★

31 Faubourg des Sautelles - R.D. 86 - 07220 Viviers

**6 rooms, 12 people**

☎ 04 75 52 60 41

@ contact@relaisduvivaris.fr

🌐 www.relaisduvivaris.fr

**Hotel - restaurant**

A modern and welcoming hotel in a building with personality. 6 air-conditioned and soundproof rooms including 2 on the ground floor near the pool.

## RATES (indication)

From 15/01 to 14/04/2022  
 Double room: 78 to 95 €  
 Breakfast: 9.50 €

Supplementary payment for pets:  
 from 10 €.

From 15/04 to 14/10/2022

Dou **From 15/01 to 14/04/2022, daily.****From 15/04 to 14/10/2022, daily.****From 15/10 to 31/12/2022, daily.****HÔTEL-RESTAURANT BEST WESTERN DOMAINE D'ALBON SENAUD** ★★

410 Route de Senaud - 26140 Albon

**Hotel - restaurant**

In front of Senaud Castel, 50 meters from the "Club house" and restaurant, 30 bedrooms. Very comfortable bedrooms with bathrooms, bathtubs and showers. Separated toilets, TV and some bedrooms with terraces.

**70 people**

☎ 04 75 03 03 90

@ reservation@golf-albon.com

🌐 www.golf-albon.com



From 01/01 to 31/12/2022.

**HÔTEL IBIS STYLES ROMANS VALENCE TGV** ★★

2-4 avenue de la Gare - ZAC de la correspondance - 26300 Alixan

**Hotel - restaurant**

## RATES (indication)

Double room: 89 to 159 €  
 Double room with breakfast: 89 to 159 €  
 Twin room: 89 to 159 €  
 Single room: 79 to 149 €  
 Triple room: 109 to 169 €  
 Room sleeping 4: 139 to 189 €  
 Suite: 149 to 199 €  
 Supplementary payment for pets:  
 10 €.

Group rate available for > 10  
 people.

**207 people**

☎ 04 75 79 74 00

@ h8717@accor.com

🌐 all.accor.com/hotel/8717/index.fr.shtml



All year round.

**HÔTEL NESTOR BOURG-LES-VALENCE** ★★

24 avenue Marc Urtin - 26500 Bourg-lès-Valence

**Hotel**

Welcoming is an art... and first of all, it is this ability to welcome people in your house, in a simple and warm way. Come and enjoy our Hotel, 2 kilometers from Exit Valence Nord on Motorway A7. Private parking, accessible to coaches.

**57 people**

☎ 04 75 43 26 51

@ nestorhotel.blv@orange.fr

🌐 hotel-nestor.fr/hotel-nestor-valence/

## RATES (indication)

Group rate available for > 10  
 people.

Tax not included.



All year round.

**HÔTEL NOEMYS VALENCE NORD** ★★

50 allée Ninon Valin - 26500 Bourg-lès-Valence

**Hotel - restaurant**

## RATES (indication)

Breakfast: 8 to 10 €.

**92 people**

☎ 04 75 82 03 33

@ resa-valence@noemys.fr

🌐 noemys.fr/etablissement-noemys-valence-nord/etablissement-38.html



From 01/01 to 31/12 between 7 am and 11 pm.

**HÔTEL-RESTAURANT CAMPANILE VALENCE NORD** ★★

route de Châteauneuf-sur-Isère - 26500 Bourg-lès-Valence

**Hotel - restaurant**

To stop or stay in Valence, Campanile Hotel has all the possible advantages. It is not far from the motorway, a few kilometers from St Joseph vineyard, the town of Romans (the capital of shoes), and even the Gorges of Ardèche are nearby.

**RATES (indication)**

Double room: 57 to 95 €.

**77 people**

☎ 04 75 82 92 97

@ campanilevalence@wanadoo.fr

🌐 www.hotel-campanile-valence.fr



From 01/01 to 31/12.

**LES ARCADES - LE LION D'OR** ★★

7 place du Marché - 26170 Buis-les-Baronnies

**Hotel**

A former private residence from the 17th century, this charming and elegant hotel is ideally situated on the famous arches place of Buis-les-Baronnies. Comfortable rooms and apartments. Heated swimming pool and wellness area.

**RATES (indication)**

Double room: 80 to 129 €

Single room: 79 to 97 €

Breakfast: from 12.50 €

Supplementary payment for pets: 15 €.

**32 people**

☎ 04 75 28 11 31

☎ 06 20 55 29 41

@ hotelarcsades.26@gmail.com

🌐 www.hotelarcsades.fr



From 20/03 to 14/11.

**CHEZ EDITH ET LAETI - LE MAS DE FANNY** ★★

1220 route de Valaurie - 26230 Chantemerle-lès-Grignan

**Hotel - restaurant**

A few kilometers from the village of Grignan, "Le Mas de Fanny" is a countryside inn with a family atmosphere. It is calm and surrounded by lavender fields and vineyards.

**RATES (indication)**

From 01/01 to 31/03/2022

Double room: 70 to 80 €

Breakfast: 9 €.

From 01/04 to 31/05/2022

Double room: 100 to 110 €

Breakfast: 9 €.

**29 people**

☎ 04 75 51 25 09

☎ 06 25 74 90 93

@ lemasdefanny.26@gmail.com

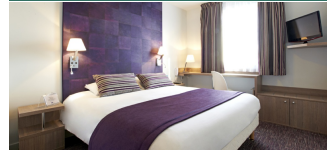
🌐 www.masdefanny.fr



From 01/01 to 31/12/2022.

**HÔTEL-RESTAURANT KYRIAD VALENCE NORD** ★★

159 avenue de Lyon - 26500 Bourg-lès-Valence

**Hotel - restaurant**

Enjoy the comfort of a 2-star hotel where everything is done for you, whether you want to relax, or work.

**RATES (indication)**

Chambre double : de 45 à 99 €

Chambre single : de 45 à 99 €

Demi-pension : de 99 à 110 €

Prix par chambre : 9,50 €

Tarif groupe Demi-pension / pers : de 43 à 66 €

**98 people**

☎ 04 75 82 95 90

@ contact@kyriadvalence.fr

🌐 www.kyriad-valence-nord.fr



Throughout the year : open daily.

**SOUS L'OLIVIER** ★★

170, Chemin du Menon - 26170 Buis-les-Baronnies

**Hotel - restaurant**

In a calm and shady setting, near the Ouvèze and the Menon rivers. Facing due south, in front of the rock of St-Julien, where you can do the via ferrata.

**RATES (indication)**

Double room: 85 €

Single room: 85 €

Half-board: 78 to 108 €

Breakfast: 10.50 €

Supplementary payment for pets: 10 €.

Group rate available for &gt; 25

☎ 04 75 28 01 04

@ hotellolivier@wanadoo.fr

🌐 www.hotel-buislesbaronnies.com



From 31/03 to 01/10.

**HÔTEL-RESTAURANT LE MISTRAL** ★★

1766 Route Nationale 7 - 26780 Châteauneuf-du-Rhône

**Hotel - restaurant**

Only 4km from Montélimar, for business or pleasure, le Mistral welcomes you to convivial and warm surroundings. 16 air-conditioned room (private bathrooms and WC), telephone, digital TV LCD and free Wi-Fi connection.

**RATES (indication)**

Double room: 80 to 135 €

Breakfast: 9.50 €.

Group rate available for &gt; 20 people.

**38 people**

☎ 04 75 90 65 65

@ contact@hotel-lemistral.com

🌐 www.hotel-lemistral-montelimar.com



From 01/01 to 31/12.

**HÔTEL-RESTAURANT LE MONT BARRAL**

1 rue du Sapet - Hameau les Nonières - 26410 Châtillon-en-Diois

**Hotel - restaurant**

Between Vercors and Provence, in a preserved environment, under the majestic Combeau Rock, Sylvie and her staff will welcome you in their comfortable house, and invite you to taste the flavours of her local cuisine.

**48 people**

☎ 04 75 21 12 21

@ contact@hotelmontbarral-vercors.com

🌐 www.hotelmontbarral-vercors.com

**RATES (indication)**

From 06/03 to 30/04/2022

Double room: 67 to 85 €

Double room with breakfast: 87 to 104 €

Twin room: 74 to 84 €

Single room: 67 to 81 €



From 06/03 to 01/11.

**HÔTEL-RESTAURANT L'ESCALE DE DIE**

6 impasse de la Clairette - 26150 Die

**Hotel - restaurant**

At the entrance of Die, a family run hotel-restaurant, with air conditioning and comfortable bedrooms. Our facilities include: your own sheltered car-park, a bar, a garden and a terrace. We cook a traditional cuisine with carefully selected local ingredients.

**9 rooms, 20 people**

☎ 04 75 22 00 95

@ hotel.lescale-de-die@orange.fr

🌐 www.lescale-de-die.com

**RATES (indication)**

Double room with breakfast: 120 to 135 €

Twin room: 120 to 135 €

Single room: 110 to 125 €

Triple room: 175 to 185 €

From 01/01 to 31/12.  
Closed on Wednesday.  
Closed between 12/02/22 to 01/03/22 and  
30/10/22 to 15/11/22.

**HÔTEL LES SOURCES DE DIEULEFIT**

1 Rue des Ecoles - 26220 Dieulefit

**Hotel - restaurant**

A few steps away from the village of Dieulefit, located in the Drôme Provençale, the 100 acre estate of the Rejambert Park welcomes "Les Sources de Dieulefit". The 94-room hotel complex is south-oriented and offers an exceptional surrounding with a lake and mountains view.

**188 people**

☎ 09 70 71 18 51

☎ 07 86 00 48 00

@ sourcesdieulefit@popinns.com

🌐 dieulefit.popinns.com

**RATES (indication)**

Tax not included.



From 20/04 to 31/10/2022.

**HÔTEL-RESTAURANT LA TREILLE MUSCATE**

Le Village - 26270 Clionsclat

**Hotel - restaurant**

Half way between Valence and Montélimar, "La Treille Muscate" is a picturesque village of Clionsclat overlooking the rolling orchards of beautiful Rhône Valley.

Perfect place to relax, recommended by Michelin, Gault & Millau.

**28 people**

☎ 04 75 63 13 10

@ latreillemuscate@wanadoo.fr

🌐 www.hotelrestaurant-latreillemuscate.com/

**RATES (indication)**

Tax not included.



From 20/01 to 20/12.

**HÔTEL LA CACHETTE**

33 rue Brun Larochette - 26220 Dieulefit

**Hotel**

"La Cachee" Hotel welcomes you in their fully renovated building and park. Located in the village of Dieulefit, it is only a few steps away from the historic center with its many shops. The hotel is situated right next to the GR9 hiking trail.

**16 rooms, 18 people**

☎ 04 75 96 49 87

@ accueil@hotellacachette.fr

🌐 www.hotellacachette.fr

**RATES (indication)**

Double room: 85 to 160 €

Triple room: 145 to 185 €

Suite: 140 to 185 €

Breakfast: 14 €

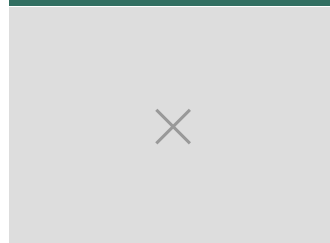
Supplementary payment for pets: 10 €.



From 04/02/2022 to 05/01/2023.

**HÔTEL-RESTAURANT L'HORLOGE GOURMANDE**

490 rue de l'Enclos - 26290 Donzère

**Hotel - restaurant**

For a break or a whole stay in Drome Provençale, come and enjoy the shade of cedars, the tasty cooking and warm atmosphere.

**55 people**

☎ 04 75 46 59 38

@ contact@horlogegourmande.com

🌐 www.hotel-restaurant-horlogegourmande.com

**RATES (indication)**

Double room: from 72 €

Triple room: from 90 €.

Tax not included.



From 01/01 to 31/12.  
Closed Saturday and Sunday.

**HÔTEL-RESTAURANT SOUS LES PINS** ★★

95 rue Marcel Champion - Quartier Les Basseaux - 26800 Étoile-sur-Rhône

**Hotel - restaurant**

8 km from Valence, the Hotel and Restaurant "Sous les pins" welcomes you in a nice and peaceful setting. This hotel has 30 bedrooms with air conditioning and all modern conveniences. The restaurant also has air conditioning and large rooms for meetings.

**63 people**

☎ 04 75 57 77 50

@ souslespins@orange.fr

🌐 www.souslespins.fr

**RATES (indication)**

Double room: 90 €  
Twin room: 90 €  
Single room: 80 €  
Triple room: 110 €  
Half-board: 103 €



From 03/01 to 23/12.

**HÔTEL LA BASTIDE DE GRIGNAN** ★★

120 chemin de Bessas - Route de Montélimar - 26230 Grignan

**Hotel - restaurant**

Serenity and calm, comfort and modernity, local products and gastronomy. 22 bedrooms of which two for persons with reduced mobility and two family suits. The restaurant "Chez Elles" is open Monday evening, Tuesday to Friday for lunch and dinner.

☎ 04 75 90 67 09

@ contact@labastidedegrignan.com

🌐 www.labastidedegrignan.com

**RATES (indication)**

Double room: 75 to 165 €  
Breakfast: 11 €.

Tax not included.



From 03/01 to 22/12/2022.

**HOTEL L'INSTANT SÉVIGNÉ** ★★

1 place Castellane - 26230 Grignan

**Hotel - restaurant**

Character hotel since 1540, in the heart of the village, L'Instant Sévigné will seduce you with its friendly and warm welcome.

**RATES (indication)**

Double room: 80 to 180 €  
Twin room: 90 to 145 €  
Breakfast: from 8 €  
Supplementary payment for pets: from 10 €.

Group rate available for &gt; 10 people.

☎ 04 75 46 50 97

@ contact@hotel-linstantsevigne.com

🌐 hotel-linstantsevigne.com/



From 06/01 to 20/12/2022.

**HÔTEL-RESTAURANT LE RELAIS** ★★

1 place Général de Miribel - 26390 Hauterives

**Hotel - restaurant**

In the heart of nature, in between the Alps and the Rhône River, next to the surprising "Palais Idéal du facteur Cheval", the Graillat family welcomes you as friends, in an authentic and refined setting.

**RATES (indication)**

Double room: 89 €  
Twin room: 103 €  
Single room: 89 €  
Triple room: 103 €  
Breakfast: 10 €  
Supplementary payment for pets: 6 €.

**38 people**

☎ 04 75 68 81 12

@ contact@hotel-relais-drome.com

🌐 www.hotel-relais-drome.com

From 01/01 to 31/12/2022, every Tuesday, Wednesday, Thursday, Friday, Saturday and Sunday.

**HÔTEL-RESTAURANT LES OLIVIERS** ★★

Rue Louis d'Arbalestier - 26270 Loriol-sur-Drôme

**Hotel - restaurant**

In the sun of Drôme Provençale, between Valence and Montélimar, 3 minutes from exit "Loriol" on motorway A7. Calm, green setting.

**RATES (indication)**

Double room: 104 to 239 €  
Half-board: 90 to 154.50 €  
Breakfast: from 12 €  
Supplementary payment for pets: from 10 €.

Tax not included.

**156 people**

☎ 04 75 61 00 55

@ info@hotel-les-oliviers.fr

🌐 www.hotel-les-oliviers.fr



From 01/01 to 31/12.

**HÔTEL-RESTAURANT PONT DU CHALON** ★★

50 route des Dauphins - 26260 Margès

**Hotel**

Charming hotel in Drôme des Collines, with a family atmosphere combining contemporary and refined decoration. Cozy comfort, mini-bar, air conditioning. Closed parking. TGV station 20 minutes away.

**RATES (indication)**

Double room: 115 to 120 €  
Single room: 99 to 101 €  
Suite: 125 to 135 €  
Breakfast: 12 to 15 €.

**12 rooms, 24 people**

☎ 04 75 45 62 13

@ info@pontduchalon.com

🌐 pontduchalon.com

Group rate available for &gt; 25



From 01/01 to 31/12.

**HÔTEL DE FRANCE** ★★★

Place Emile Loubet - 26740 Marsanne

**Hotel - restaurant**

For a night, a weekend, or more...  
The Hôtel de France is a village hotel like no other!

**RATES (indication)**

Double room: 90 to 150 €  
Breakfast: 12 €.

**21 people**

☎ 04 75 00 71 06

@ hoteldefrance@les-aubergistes.fr

🌐 www.hotel-de-france-marsanne.fr/

Tax not included.



All year round.

**HÔTEL DE MIRMANDE** ★★★

3 rue André Lhote - 26270 Mirmande

**Hotel**

Situated in the heart of Drôme region, close to the highway "Autoroute du soleil", a charming hotel with a warm atmosphere. This 18th century old building is comfortable and smartly decorated and has a restaurant.

**22 people**

☎ 04 75 63 13 18

@ resa@hotelmirmande.fr

🌐 www.hotelmirmande.fr/fr/

**RATES (indication)**

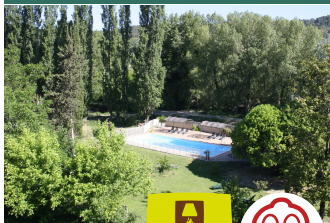
Double room: 70 to 160 €  
Single room: 70 to 160 €  
Triple room: 116 to 176 €  
Room sleeping 4: 132 to 192 €  
Breakfast: 13 to 15 €  
Supplementary payment for pets: 8



From 01/01 to 31/12.

**HÔTEL-RESTAURANT LE SAINT-MARC** ★★★

50 rue de l'Ancienne Gare - 26170 Mollans-sur-Ouvèze

**Hotel - restaurant****RATES (indication)**

Double room: 75 to 102 €  
Double room with breakfast: 101 to 128 €  
Single room: 75 to 102 €  
Triple room: 105 to 120 €  
Room sleeping 4: 125 to 150 €  
Half-board: 38 €  
Breakfast: 13 €  
Supplementary payment for pets: 6 €.

**20 rooms, 40 people**

☎ 04 75 28 70 01

@ hotel@saintmarc.com

🌐 www.saintmarc.com

Group rate available for > 12 people.



From 05/04 to 15/10/2022.

**HÔTEL-RESTAURANT LA VIVANDE** ★★★

20 impasse des senteurs - Route de Cléon d'Andran - 26740 Marsanne

**Hotel**

In a calm setting surrounded by trees, discover this charming, with 9 bright bedrooms, 6 of which have mezzanines to welcome whole families. With all mod cons (air conditioning, TV, wifi...) Also a spacious apartment for up to 6 people.

**9 rooms, 30 people**

☎ 04 75 51 27 53

☎ 06 32 65 02 69

@ info@lavivande.com

🌐 www.lavivande.com

**RATES (indication)**

Double room: from 79 €.

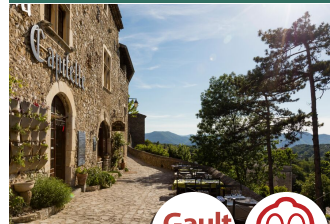
Tax not included.



From 01/02 to 31/12.

**HÔTEL-RESTAURANT LA CAPITELLE** ★★★

1 Rue du Boulanger - Le Village - 26270 Mirmande

**Hotel - restaurant**

House dating from the Renaissance period, former workshop of the cubist painter André LHOPE.

**RATES (indication)**

Double room: 75 to 150 €  
Room sleeping 4: 125 to 160 €  
Breakfast: 12 €.

**24 people**

☎ 04 75 63 02 72

@ capitelle@wanadoo.fr

🌐 www.lacapitelle.com

Tax not included.



From 01/02 to 31/12.

**APPART'CITY MONTÉLIMAR** ★★★

1 rue du Général Chabrilan - 26200 Montélimar

**Hotel**

At Appart-City Montélimar, you stay in the town centre, in the heart of the prestigious Quartier Saint Martin. From a furnished one-room flat to a furnished 3-room apartment, you will have the service and comfort of a hotel, for a short or long stay.

**287 people**

☎ 04 75 00 38 50

@ montelimar@appartcity.com

🌐 www.appartcity.com/fr/appart-hot-el/montelimar-a-montelimar.html#

**RATES (indication)**

Double room: 49 to 129 €  
Breakfast: 8.50 €.



From 01/01 to 31/12.

**HÔTEL-RESTAURANT LE PRINTEMPS**

8 chemin de la Manche - 26200 Montélimar

**Hotel - restaurant**

In a calm and green setting, next to Montélimar city centre, its Provençal Avenues and the new "Quartier Saint Martin", Hotel and Restaurant "Printemps" and the personal touch of its welcoming, will satisfy you...

**25 people**

☎ 04 75 92 06 80

@ contact@hotelprintemps.com

www.hotelprintemps.com

**RATES (indication)**

Double room: 72 to 90 €

Breakfast: from 9 €.

Group rate available for > 30 people.



From 01/01 to 31/12/2022.

**ORIGINAL BOUTIQUE HÔTEL MONTÉLIMAR**

8 boulevard du Pêcher - 26200 Montélimar

**Hotel**

Our hotel is located in the heart of the city of Montélimar, a 5-minute walk from the train station. We welcome you in a 3 star hotel recently renovated in a warm and contemporary style.

**45 rooms, 103 people**

☎ 04 75 00 62 22

@ h2608@theoriginalshotels.com

www.theoriginalshotels.com/hotels/hotel-montelimar

**RATES (indication)**

Double room: 59 to 135 €

Breakfast: 11 €.

Group rate available for > 20 people.

Tax not included.



From 01/01 to 31/12.

**LA BASTIDE DES MONGES**

Quartier les Monges - Route d'Orange - 26110 Nyons

**Hotel**

Between the vineyards and the countryside, facing Mont Ventoux and the dazzling countryside of Nyons and Drôme Provençale, this old farmhouse has been renovated with passion.

☎ 04 75 26 99 69

@ lesmonges@wanadoo.fr

www.bastidedesmonges.com

**RATES (indication)**

Double room: 75 to 135 €

Twin room: 75 to 95 €

Single room: 75 to 95 €

Triple room: 120 to 150 €

Breakfast: 8 to 12 €.



From 01/03 to 30/11/2022.

**HÔTEL SPHINX**

Allées Provençales - 19 boulevard Marre Desmarais - 26200 Montélimar

**Hotel**

In the town centre, 200 metres from the railway station a former private mansion in the 17th century, today a charming hotel, combining the charm of the past with today's comfort. Meeting room. Closed car park.

**58 people**

☎ 04 75 01 86 64

@ reception@sphinx-hotel.fr

www.sphinx-hotel.fr

**RATES (indication)**

Double room: 88 to 107 €

Breakfast: from 10.30 €.

Tax not included.



From 01/01 to 24/12.

**HÔTEL-RESTAURANT COLOMBET**

53 place de la Libération - 26110 Nyons

**Hotel - restaurant**

Behind the plane trees of the square, this 19th century beautiful building hides some secrets and pleasures... A large shaded terrace, a peaceful patio with trees, spacious bedrooms, refined lounges, a restaurant with flavours of the Drôme Provençale.

**66 people**

☎ 04 75 26 03 66

@ info@hotelcolombet.com

www.hotelcolombet.com

**RATES (indication)**

Double room: 86 to 170 €

Single room: 78 to 148 €

Half-board: 80 to 120 €

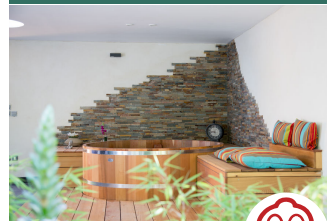
Full-board: 102 to 134 €

Breakfast: 13 to 15 €.

From 25/01 to 04/12/2022 between 7 am and 9 pm.  
Closed Friday and Saturday.

**LA CARAVELLE**

8 rue des Antignans - 26110 Nyons

**Hotel**

Calm and tranquillity in the Drôme Provençale near the center of Nyons. This hotel offers the relaxing atmosphere of its garden and its shady terrace for breakfast. Wellness area (jacuzzi in cedar wood). 1 room for persons with reduced mobility.

**27 people**

☎ 04 75 26 07 44

@ lacaravellenyons@free.fr

www.lacaravelle-nyons.com

**RATES (indication)**

Tarifs groupes : Devis sur demande.



All year round.

**LA PICHOLINE**

Promenade de la Perrière - 26110 Nyons

**Hotel****RATES (indication)**

Double room: 81 to 114 €  
Single room: 81 to 114 €  
Breakfast: 8 to 12 €.

Tax not included.

☎ 04 75 26 06 21

@ picholine26503@orange.fr

www.hotel-lapicholine.com



From 26/02 to 31/10/2022.

**HÔTEL-RESTAURANT LE MOULIN DE LA PIPE**

Le Moulin de la Pipe - 26400 Omblèze

**Hotel - restaurant**

In the South of Vercors Natural Park, in the listed site of the Gorges of Omblèze and Druise waterfalls, le Moulin de la Pipe welcomes you for an unforgettable stay.

**RATES (indication)**

Double room: 95 €  
Twin room: 115 €  
Single room: 95 €  
Triple room: 115 €  
Room sleeping 4: 135 €  
Breakfast: 10.50 €  
Supplementary payment for pets: from 0 €

**58 people**

☎ 04 75 76 42 05

☎ 06 70 00 95 75

@ reservation@moulindepipe.com

www.moulindepipe.com

**HÔTEL-RESTAURANT LE DOMAINE DES OLIVIERS**

4 rue Paul d'Allard - 26700 Pierrelatte

**Hotel - restaurant**

A very comfortable hotel with refined interiors, set in grounds full of greenery with swimming-pool and restaurant.

**RATES (indication)**

Double room: 89 to 150 €  
Single room: 84 to 94 €  
Triple room: 105 to 150 €  
Room sleeping 4: 120 to 150 €  
Breakfast: 12 €.

**104 people**

☎ 04 75 92 43 30

@ contact@domainedesoliviers.fr

www.domainedesoliviers.fr



From 01/01 to 31/12/2022.

**HÔTEL-RESTAURANT LES HOSPITALIERS**

Vieux Village - 26160 Le Poët-Laval

**Hotel - restaurant**

In the village of "Poët-Laval", in Drôme Provençale, 5 kms from Dieulefit (village of potters), 20 kms from Montélimar, and at the top of one of France's most beautiful villages, this charming Hotel and Restaurant, welcomes you with great care.

**RATES (indication)**

Double room: 84 to 177 €  
Single room: 77 to 86 €  
Triple room: 148 to 187 €  
Half-board: from 45 €  
Breakfast: from 16 €

**42 people**

☎ 04 75 46 22 32

@ contact@hotel-les-hospitaliers.com

www.hotel-les-hospitaliers.com



From 01/04 to 31/10/2022.

**HÔTEL-RESTAURANT LE NOUVEL**

108 avenue Jean Jaurès - 26800 Portes-lès-Valence

**Hotel - restaurant**

Discover this charming Hotel and Restaurant, entirely renovated with 27 bedrooms, with all mod cons. As the nicer days arrive, you will be able to enjoy your meal outdoors, on our shady terrace, rocked by the sound of our fountain.

**RAT** From 04/01 to 12/06 between 7 am and 10 pm.  
Dou Closed Saturday and Sunday.

From 13/06 to 11/09  
Sinç Opening hours on Monday between 9 am and 10 pm. On Tuesday, Wednesday, Thursday, Friday and Saturday between 7 am and 10 pm. On Sunday between 7 am and 11.30 am.

From 12/09 to 23/12 between 7 am and 10 pm.  
Roc Closed Saturday and Sunday.

**25 rooms, 47 people**

☎ 04 75 57 46 46

@ contact@nouvelhotel.fr

www.nouvelhotel.fr

**HÔTEL L'OUSTAU DE LA FONT**

240 montée du village - 26570 Reilhanette

**Hotel**

Situated in Reilhanette, between Sault and Montbrun-les-Bains, the hotel offers you 6 comfortable rooms in a friendly and warm atmosphere. Wellness facilities are also available.

**RATES (indication)**

Double room: 65 to 140 €  
Single room: 65 to 140 €  
Breakfast: 10 to 12 €.

**16 people**

☎ 04 75 28 83 77

@ info@oustaudelafont.com

www.oustaudelafont.com

Tax not included.



From 11/02 to 15/11/2022.



**HÔTEL-RESTAURANT LE CLOS DES TANNEURS** ★★

Clos des Tanneurs - Avenue Adolphe Figuet - 26100 Romans-sur-Isère

**Hotel - restaurant**

Calm Hotel near the city centre, along the Isère river.

**RATES (indication)**

Réservation possible au 04 75 05 10 20.

**80 people**

☎ 04 75 05 10 20

@ romans@comfort-drome.fr

🌐 www.comfort-drome.fr

*All year round between 7 am and 11 pm.***VICTORIA BOUTIQUE HÔTEL** ★★

15 place de l'Esplan - 26130 Saint-Paul-Trois-Châteaux

**Hotel****RATES (indication)**

Double room: 95 to 130 €  
 Single room: 90 to 125 €  
 Triple room: 115 to 130 €  
 Suite: 125 to 130 €  
 Breakfast: 14 €.

☎ 04 75 91 84 75

@ contact@levictoriaboutiquehotel.com

🌐 levictoriaboutiquehotel.com/

*All year round.**Canceled or closed.***HÔTEL-RESTAURANT IBIS MONTÉLIMAR NORD** ★★

Zone du Pavé - RN 7 - 26270 Saulce-sur-Rhône

**Hotel - restaurant**

The ibis Montélimar Nord hotel is located in the heart of the Drôme Provençale and close to the Ardèche gorges. It is 5 minutes away from the A7 highway (exit 17).

**RATES (indication)**

Double room: 53 to 98 €  
 Breakfast: 10.50 €  
 Supplementary payment for pets: 8 €.

**156 people**

☎ 04 75 63 09 60

@ h0623@accor.com

🌐 all.accor.com/hotel/0623/index.fr.shtml

Group rate available for &gt; 10 people.

*From 01/01 to 31/12.***HÔTEL-RESTAURANT KARÈNE** ★★

455 rue du Soleil - 26750 Saint-Paul-lès-Romans

**Hotel - restaurant**

Modern and practical Hotel in the heart of the business centre in Drôme des collines.

**RATES (indication)**

Double room: 75 to 85 €  
 Double room with breakfast: 97 to 107 €  
 Twin room: 80 to 87 €  
 Single room: 66 to 74 €  
 Triple room: 90 to 100 €  
 Room sleeping 4: 105 to 115 €  
 Breakfast: 11 €  
 Group rate half-board/person: from 85 €

**36 rooms, 75 people**

☎ 04 75 05 12 50

@ contact@hotelkarene.com

🌐 www.hotelkarene.com

**HÔTEL-RESTAURANT IBIS LYON SUD-SAINT-RAMBERT-D'ALBON** ★★

7 Quartier Champagnère - 7 Route Nationale 7 - 26140 Saint-Rambert-d'Albon

**Hotel - restaurant**

Hotel Ibis in St Rambert d'Albon is situated in the Drôme's vineyards, 60 km south of Lyon and next to a Motorway Exit, on RN7 towards Valence. It is next to the "Palais Idéal du Facteur Cheval", "Peaugres zoo" and the golf course of Albon.

**157 people**

☎ 04 75 03 04 00

@ H0725@accor.com

🌐 www.ibis.com/fr/hotel-0725-ibis-lyon-sud-saint-rambert-d-albon/index.shtml

**RATES (indication)**

Chambre double : de 77 à 136 €  
 Chambre single : de 77 à 136 €  
 Chambre triple : de 87 à 146 €

*From 01/01 to 31/12/2022.***HÔTEL-RESTAURANT LA BASTIDE SAINT-BACH** ★★

80 chemin de la Bastide - 26790 Suze-la-Rousse

**Hotel - restaurant**

This charming Mansion of the 18th century is situated in the heart of vineyards and truffle oaks. This beautiful house is the perfect place to stay, for a break or holidays in a calm and relaxing setting.

**RATES (indication)**

Double room: 75 to 120 €  
 Triple room: 100 to 135 €  
 Half-board: 27 €  
 Breakfast: 12 €.

**24 people**

☎ 04 75 04 85 67

@ accueil@bastidesaintbach.fr

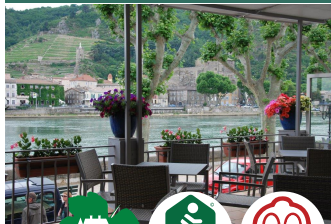
🌐 www.bastidesaintbach.fr

Tax not included.

*From 16/01 to 14/12.*

**HÔTEL LES DEUX CÔTEAUX** ★★

18 rue Joseph Péala - 26600 Tain-l'Hermitage

**Hotel**

You will appreciate the perfect situation of Hotel "Les 2 Coteaux". Even though it is situated in the city center, the Hotel benefits from a calm setting next to a pedestrian street, and the Rhône river runs just nearby.

**RATES (indication)**

Double room: 88 €  
Twin room: 88 €  
Single room: 70 to 75 €  
Breakfast: 12 €  
Supplementary payment for pets: 10 €

**36 people**

☎ 04 75 08 33 01

@ contact@2coteauxhotel.fr

🌐 2coteauxhotel.fr



From 01/01 to 31/12.

**HÔTEL-RESTAURANT CAMPANILE MONTÉLIMAR NORD - LES TOURETTES** ★★

Zone hôtelière commerciale et tertiaire - 695 rue de Bérianne - 26740 Les Tourettes

**Hotel - restaurant**

On the way out of the city centre, "le Campanile Montélimar Les Tourettes" offers you inexpensive bedrooms in an agreeable setting. The proximity of motorway A7 gives you easy access to the cities of Valence (going north) and Avignon (to the south).

**80 people**

☎ 04 75 90 02 23

@ montelimar.lestourettes@campanile.fr

🌐 www.campanile-montelimar-les-tourettes.fr

**RATES (indication)**

Double room: 59 to 155 €  
Breakfast: 11.90 €  
Supplementary payment for pets: 5 €



From 01/01 to 31/12.

**DOMAINE LES MÉJEONNES** ★★

9 chemin de la Méjeonne - 26230 Valaurie

**Hotel - restaurant**

On your way to Grignan, 6 km from Exit "Montélimar Sud" (On motorway A7), the Hotel and Restaurant « Les Méjeonnes » welcome you in a unique and charming place.

**RATES (indication)**

Double room: from 79 €  
Chambre familiale: 129 to 249 €  
Breakfast: 14 €

**70 people**

☎ 04 75 98 60 60

@ contact@mejeonnes.com

🌐 www.mejeonnes.com



Tax not included.



From 01/01 to 31/12/2022.

**HÔTEL LOGIS LE MAS DE LILY ROSE** ★★

263 route de Montélimar - 26230 Valaurie

**Hotel - restaurant**

"Mas provençal" (typical Provence Mansion) with park and pool. Charming hotel with 14 bedrooms with AC. On the menu: Nicole will make you taste specialties from Lyon, and local provençal dishes, quality guaranteed!

**38 people**

☎ 04 75 98 52 03

☎ 06 10 48 11 59

@ lemasdelilyrose@yahoo.fr

🌐 lemasdelilyrose.com

**RATES (indication)**

Double room: 70 to 130 €  
Room sleeping 4: 95 to 175 €  
Breakfast: from 12 €

Group rate available for &gt; 10 people.



From 01/01 to 31/12.

**HÔTEL ACE VALENCE** ★★

47 avenue des Auréats - 26000 Valence

**Hotel****RATES (indication)**

Double room: 56 to 70 €  
Single room: 56 to 70 €  
Triple room: 64 to 80 €  
Room sleeping 4: 73 to 90 €  
Suite: 82 to 100 €  
Breakfast: 7.50 €  
Supplementary payment for pets: 8 €

**164 people**

☎ 04 75 56 05 60

@ valence@ace-hotel.com

🌐 www.ace-hotel.com



From 01/01 to 31/12.

**HÔTEL-RESTAURANT CALIFORNIA** ★★

174 avenue Maurice Faure - 26000 Valence

**Hotel - restaurant****RATES (indication)**

Group rate available for &gt; 20 people.

**41 people**

☎ 04 75 44 36 05

@ hotelcaliforniadrome@orange.fr

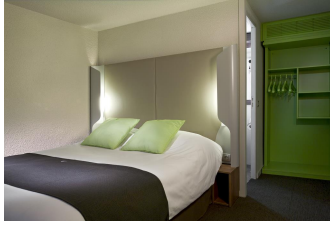
🌐 www.hotel-california-valence.fr/



All year round.

**HÔTEL-RESTAURANT CAMPANILE VALENCE SUD** ★★

9 rue Henri Abel - 26000 Valence

**Hotel - restaurant**

RATES (indication)  
Tarifs non communiqués.

**129 people**

☎ 04 75 56 92 80

@ valence@campanile.fr

🌐 www.campanile-valence-sud.fr/fr/index.aspx



From 01/01 to 31/12.

**HÔTEL-RESTAURANT IBIS VALENCE SUD** ★★

355 avenue de Provence - 26000 Valence

**Hotel - restaurant**

RATES (indication)  
Double room: 71 to 150 €  
Single room: 71 to 150 €  
Triple room: 91 to 160 €  
Room sleeping 4: 91 to 180 €  
Breakfast: 10.50 €.

**221 people**

☎ 04 75 44 42 54

@ h0644@accor.com

🌐 all.accor.com/hotel/0644/index.fr.shtml

Group rate available for > 15 people.

Tax not included.



All year round.

**HÔTEL THE ORIGINAL CITY VALENCE-EST** ★★

Place Jean Rostand - Chemin du Pan - Plateau des Couleures 1 - 26000 Valence

**Hotel - restaurant**

RATES (indication)  
Double room: from 79 €  
Double room with breakfast: from 99 €  
Twin room: from 79 €  
Single room: from 69 €  
Triple room: from 100 €  
Room sleeping 4: from 120 €  
Half-board: from 65.50 €  
Full-board: from 82.50 €  
Breakfast: from 12 €  
Supplementary payment for pets: 9 €.

**112 people**

☎ 04 75 79 03 00

@ vn2606@inter-hotel.com

🌐 www.comfort-drome.fr/-Comfort-Hotel-Valence-.html



From 01/01 to 31/12.

**HÔTEL IBIS LYON SUD** ★★

145 rue Pasteur - 38670 Chasse-sur-Rhône

**Hotel - restaurant**

The hotel is ideally located near the intersection of the main motorways, 8 km from Vienne. It is open 24 hours a day and 7 days a week for a quick break or a business trip.

**116 people**

☎ 04 72 24 32 12

@ h2169-gm@accor.com

RATES (indication)

Double room: 72 to 150 €

Single room: 72 to 150 €

Breakfast: 10.50 €

Supplementary payment for pets: 8 €

**IBIS STYLES LYON SUD VIENNE** ★★

1363 Avenue Frédéric Mistral - 38670 Chasse-sur-Rhône

**Hotel - restaurant**

At the intersection of the main motorways, this hotel-restaurant provides guests with comfortable, fully equipped and spacious rooms for a business trip or holiday.

RATES (indication)

Double room with breakfast: 79 to 319 €

Twin room: 79 to 319 €

Single room: 69 to 309 €

Triple room: 89 to 329 €

Supplementary payment for pets: 10 €.

**115 rooms, 230 people**

☎ 04 72 49 58 68

@ H0349@accor.com

🌐 all.accor.com/hotel/0349/index.fr.shtml



From 16/04 to 31/12/2022, every Monday, Tuesday, Wednesday, Thursday and Friday.

**LE COTTAGE DE CLAIREFONTAINE** ★★

616 Chemin du Marais - 38121 Chonas-l'Amballan

**Hotel - restaurant**

In the charming village of Chonas, come and stay at the Cottage, a haven of peace in warm, contemporary style. At "Le Bistrot" restaurant next door, you can enjoy regional and flavoursome cuisine.

**12 rooms, 27 people**

☎ 04 74 58 83 28

@ contact@cottage38.fr

🌐 www.domaine-de-clairefontaine.fr

RATES (indication)

Double room: from 95 €

Double room with breakfast: 119.60 to 125.60 €

Single room: 95 to 130 €

Triple room: 117 to 280 €

Room sleeping 4: 240 to 280 €

Suit

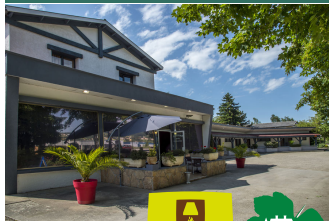
From 04/03 to 26/12/2022  
Opening hours on Monday, Tuesday, Friday,  
Saturday and Sunday.

Closed Wednesday and Thursday.  
Closed exceptionally on May 1st.



**RELAIS 500 DE VIENNE** ★★

986 RN 7 - 38121 Chonas-l'Amballan

**Hotel - restaurant**

Just a few miles south of Vienne, the Relais 500 is designed in 1960s American motel style. It brings to life the atmosphere on the legendary Nationale 7 road. If you love vintage cars, then you've come to the right place!

**RATES (indication)**

Double room: 80 to 95 €  
 Single room: 75 to 90 €  
 Triple room: 90 to 104 €  
 Room sleeping 4: 135 to 160 €  
 Half-board: 70 to 85 €  
 Full-board: 85 to 100 €

**36 rooms, 85 people**

☎ 04 74 58 81 44

@ relais500@wanadoo.fr

www.relais-500-de-vienne.com



From 17/01 to 16/12/2022  
 Opening hours daily.

**HÔTEL LA GABETIÈRE** ★★

269 Le Logis Neuf - D 502 - 38780 Estrablin

**Hotel**

The La Gabetière hotel welcomes guests in a charming 16th century manor house in a vast park. In this country setting, you will love the poetry of the old stones, as well as the swimming pool on sunny days.

**RATES (indication)**

Double room: 85 to 95 €  
 Double room with breakfast: 97 to 107 €  
 Single room: from 70 €  
 Triple room: from 105 €  
 Room sleeping 4: from 135 €

**32 people**

☎ 04 74 58 01 31

@ lagabetiere@orange.fr

www.la-gabetiere.com



From 29/01 to 30/12.

**MOODZ HÔTEL** ★★

8 place Claude Barbier - 38780 Pont-Évêque

**Hotel**

MOODz is a boutique hotel between Vienne and Lyon, the ideal place to relax just like at home.

**RATES (indication)**

Double room: 90 to 185 €.

Tax not included.

**19 rooms**

☎ 04 81 62 00 47

☎ 06 09 32 65 55

@ contact@moodz-hotel.com

www.moodz-hotel.com



From 01/01 to 31/12/2022  
 Opening hours daily between 7.30 am and 9.30 am and between 6 pm and 8.30 pm.

**GRAND HÔTEL DE LA POSTE VIENNE** ★★

47 cours Romestang - 38200 Vienne

**Hotel**

This delightful and traditional hotel with air-conditioning is located in a converted 18th century coaching inn. It welcomes guests at the heart of the town and the monuments in a warm, friendly atmosphere.

**RATES (indication)**

Double room: 79 to 120 €  
 Single room: 79 to 120 €  
 Triple room: 89 to 140 €  
 Room sleeping 4: 104 to 140 €  
 Breakfast: 6 to 13 €

**36 rooms, 82 people**

☎ 04 74 85 02 04

@ hoteldelapostevienne@orange.fr

grandhoteldelapostevienne.com/



All year round  
 Opening hours on Monday, Tuesday, Wednesday, Thursday and Friday between 6.30 am and 12 am. On Saturday and Sunday between 8 am and 12 am. Closed exceptionally on December 25th.

**IBIS HÔTEL LYON SUD VIENNE SAINT LOUIS** ★★

Place Saint Louis - 38200 Vienne

**Hotel**

80 modern, comfortable and fully equipped rooms await guests in this hotel, ideally located in the town centre, a step or two away from the museum and the Saint-Romain-en-Gal - Vienne archaeological site.

**RATES (indication)**

Double room: 75 to 150 €  
 Single room: 75 to 150 €  
 Breakfast: 9.60 to 11 €.

**80 rooms, 185 people**

☎ 04 74 87 03 37

@ h6867@accor.com

www.accorhotels.com/fr/hotel-6867-ibis-lyon-sud-vienne-saint-louis/index.shtml



From 01/01 to 2014/12/31.

**LE DOMAINE DES VIGNES** ★★

41 route de la Taquière - 69420 Ampuis

**Hotel**

At the foot of the Côte-Rôtie vineyards, this hotel is the perfect place to visit the nearby wine area. What's more, the owners are also winemakers and will share a tasting of their excellent wines for an early evening in a friendly atmosphere.

**RATES (indication)**

Double room: 95 to 130 €  
 Twin room: 95 to 130 €  
 Single room: 79 to 95 €  
 Room sleeping 4: 140 to 205 €  
 Breakfast: 11 €

**12 rooms, 28 people**

☎ 04 74 59 21 24

@ contact@hoteldomainedesvignes.fr

domaine-des-vignes.com



From 02/01 to 31/12/2022.

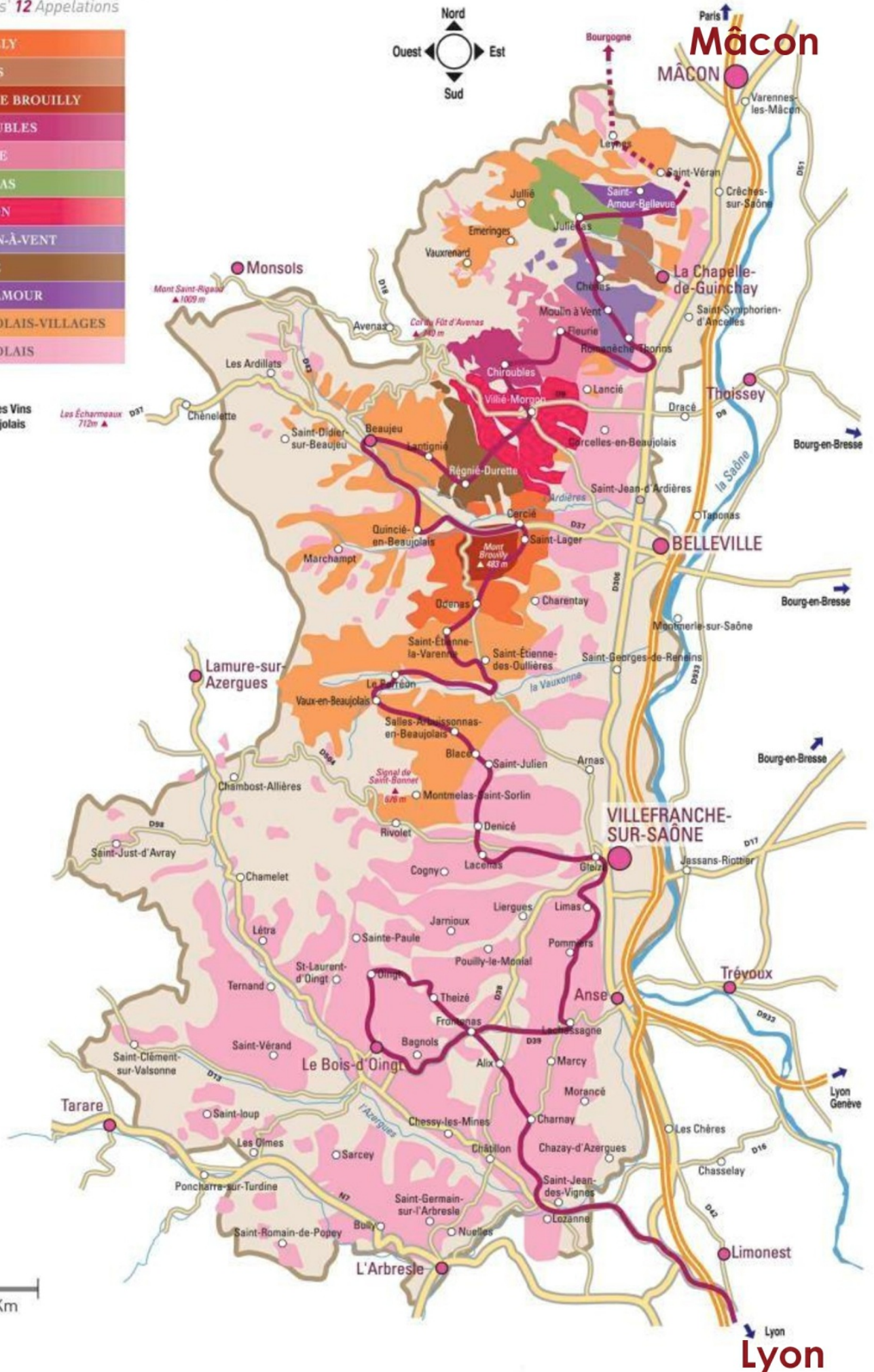
# MAP BEAUJOLAIS VINEYARDS

Les 12 Appellations du Beaujolais

Beaujolais' 12 Appellations

BROUILLY
CHÉNAS
CÔTE DE BROUILLY
CHIROUBLES
FLEURIE
JULIÉNAS
MORGON
MOULIN-À-VENT
RÉGNIÉ
SAINTE-AMOUR
BEAUJOLAIS-VILLAGES
BEAUJOLAIS

Route des Vins du Beaujolais



Lyon



# RHONE VALLEY – COTES DU RHONE VINEYARDS



Auvergne-Rhône-Alpes area



Rhone Valley Major taps

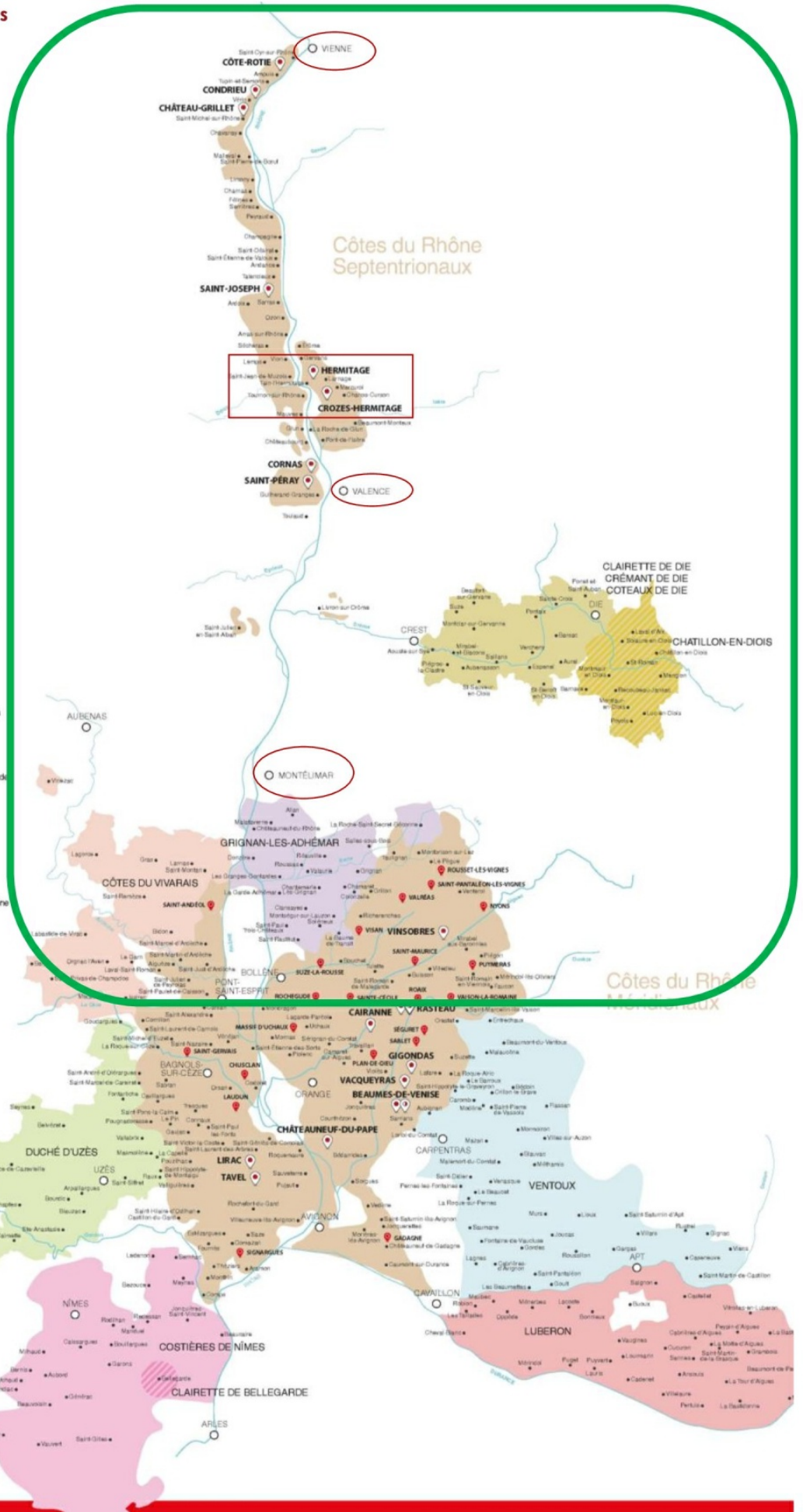


## VIGNOBLES DES CÔTES DU RHÔNE ET DE LA VALLÉE DU RHÔNE

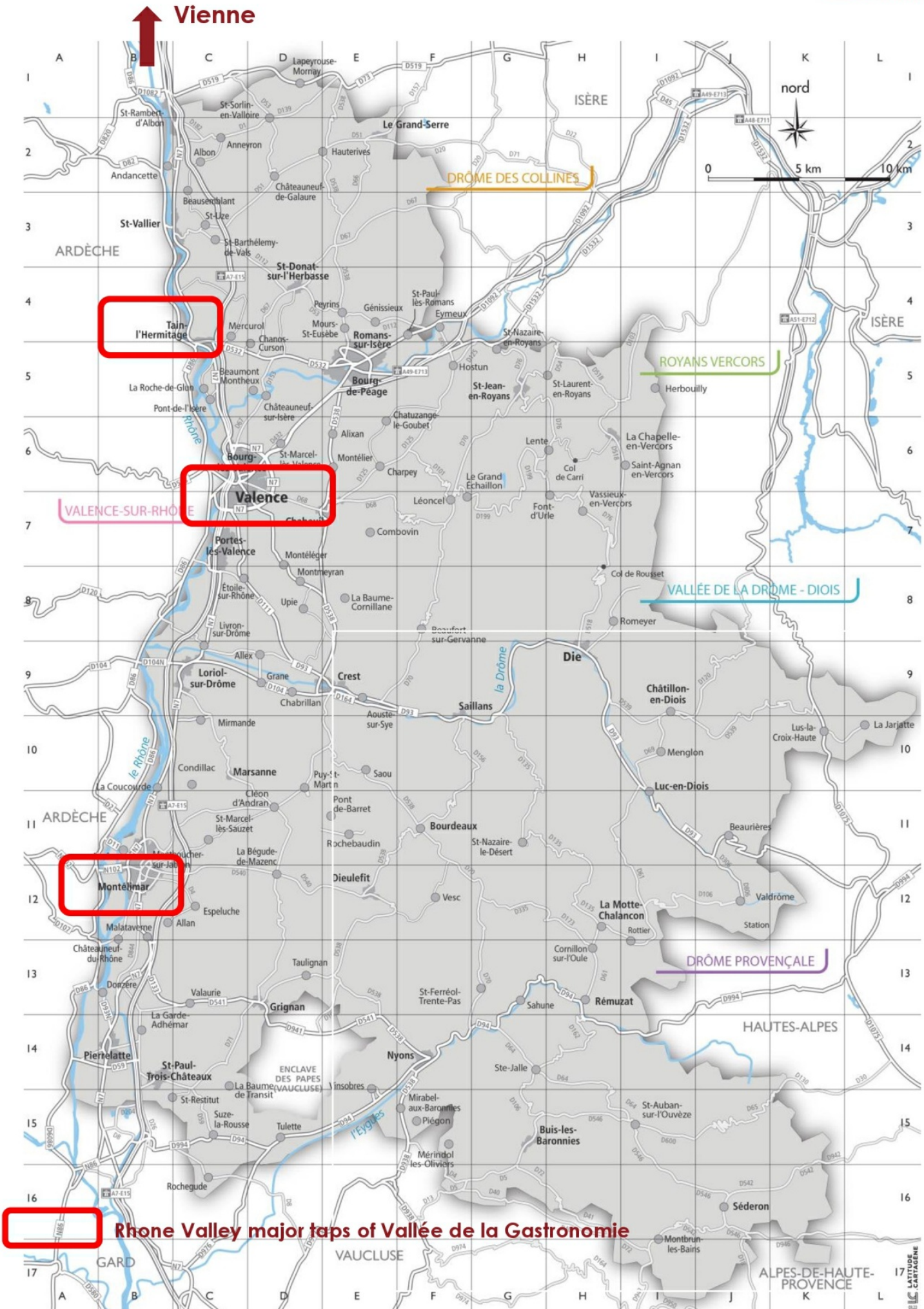
### CÔTES DU RHÔNE AND RHONE VALLEY VINEYARDS

#### LÉGENDE / LEGEND

- Aire de l'AOC Côtes du Rhône Côtés du Rhône production area
- Les 171 Communes productrices d'AOC Côtes du Rhône 171 Villages producing Côtés du Rhône AOC wines
- AOC Clairette de Die et vins du Diois
- Aire mixte AOC Châtillon-en-Diois
- AOC Costières de Nîmes
- Aire Mixte AOC Clairette de Bellegarde
- AOC Côtes du Vivarais
- AOC Duché d'Uzès
- AOC Grignan-les-Adhémar
- AOC Luberon
- AOC Ventoux
- Les 17 Crus AOC des Côtes du Rhône 17 Côtés du Rhône Crus AOC
- Les 2 Vins Doux Naturels 2 Natural sweet wines
- Les 22 Côtes du Rhône Villages avec noms géographiques 22 Côtés du Rhône Villages bearing a geographical name
- Les villes principales Main cities



# MAP RHONE VALLEY - DROME





# RHONE VALLEY - ARDECHE AREA



Rhone Valley major taps of Vallée de la Gastronomie