

# Sales Manual PROVENCE

© SHUTTERSTOCK / Bertrand Louis

OUTSTANDING  
EXPERIENCES

ACTIVITIES WINE  
& GASTRONOMY

WINE GROWERS,  
CELLARS AND PRODUCERS

GOURMET  
VISITS

MARKETS  
& EVENTS

RESTAURANTS  
AND INNS

MAJOR  
TOURISTIC SIGHTS

CONTACTS



## ACCESS TO PROVENCE SOUTH OF VALLEE DE LA GASTRONOMIE



**Marseille-Provence airport**

<https://www.marseille.aeroport.fr/>

**Paris CDG airport**

<https://www.parisaeroport.fr/en>

**Lyon Saint-Exupéry International airport**

<https://www.lyonaeroports.com/>

**By TGV (high speed train)**

<https://www.sncf-connect.com/en-en/>

- **Paris – Marseille : 3h**
- **Lyon – Marseille : 1h45**
- **Aix-en-Provence – Marseille : 45m**
- **Nîmes – Marseille : 1h30**

**By motorways / highways :**

- **A7 access to Provence - North**
- **A8 access to Provence - East**
- **A50 access to Provence - East**
- **A51 access to Provence - North**
- **A54 access to Provence - West**

More information : <https://www.viamichelin.com/>



## SOUTH OF VALLEE DE LA GASTRONOMIE: PROVENCE



**PROVENCE**



# Oustanding Experiences

## CHOCOLATERIE DE PUYRICARD (CHOCOLATE FACTORY)

Avenue Georges de Fabry - Quartier Maliverny - 13090 Aix-en-Provence



Venture inside the world of chocolate at the Chocolaterie de Puyricard.

### RATES (indication)

Free access.  
Group rate available for > 10 people.

Visit: 10 € per person / 5 € per person for groups

*From 17/01 to 31/10/2022, every Monday, Tuesday, Wednesday and Saturday between 9 am and 4 pm. Closed exceptionally on May 1st. Closed on public holidays.*

*From 02/11 to 31/12/2022, every Monday, Tuesday, Wednesday, Thursday, Friday and Saturday between 9 am and 6 pm. Closed exceptionally on December 25th. Closed on public holidays.*



☎ 04 42 28 18 18

@ visite@puyricard.fr

🌐 www.puyricard.fr

## LA FABRIQUE DES CALISSONS - ROY RENÉ CONFECTIONERY

5380 Route D'Avignon - 13090 Aix-en-Provence



Nougat with Calisson d'Aix: Roy René's Calissons are all about a family from Provence.

### RATES (indication)

Free access.

☎ 04 42 39 29 82

@ visites@calisson.com

🌐 www.calisson.com

*From 01/01 to 31/12, daily. Closed exceptionally on January 1st, May 1st and December 25th. Daily open from Monday to Saturday from 9.30am to 12.30pm and from 1.30pm to 7pm. On Sunday from 10am to 1pm and from 2pm to 6pm.*



## MAS SAINT GERMAIN

Villeneuve - 13200 Arles



### RATES (indication)

Paying

☎ 04 90 97 00 60

@ laure@massaintgermain.com

🌐 www.massaintgermain.com

## MAISON FERRONI

44 impasse de la Badiane - 13400 Aubagne



Maison Ferroni produces a range of French spirits that all either have a history with or are deeply rooted in the terroir of Provence.

### RATES (indication)

Free access.

☎ 04 91 24 88 91

@ info@ferroni.com

🌐 www.ferroni.com

*All year round, daily.*

## LA MAGDELEINE - MATHIAS DANDINE

2 rond-point des Charrons - 13420 Gémenos



The fine-dining establishment at the La Magdeleine hotel in Gémenos pays tribute every day, depending on the seasons, to the flavours and scents of Provence thanks to the local products meticulously selected by Michelin-starred chef Mathias Dandine.

### RATES (indication)

Paying

**75 seats, 70 terrace place settings**

☎ 04 42 32 20 16

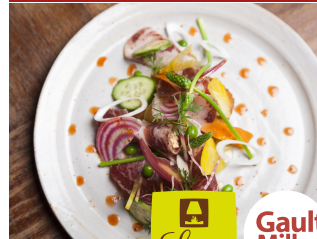
🌐 www.relais-magdeleine.com



*All year round, daily.*

## LE GRAND PUECH

8 Rue St Sébastien - 13105 Mimet



### Restaurant

The Le Grand Puech hotel-restaurant in Mimet, the village at the highest altitude in the Bouches-du-Rhône, is in an exceptional location with a clear view of the Etoile mountain range, offering a complete change of scenery for your corporate lunches or dinners.

**50 seats**

☎ 04 42 58 91 06

@ legrandpuech@orange.fr

🌐 www.legrandpuech.fr

### RATES (indication)

Adult menu: 14 to 42 €.



*From 01/01 to 31/12. Closed Monday and Tuesday.*



## FERME DU BRÉGALON

Mas du Brégalon - Chemin Du Gour - 13840 Rognes



### RATES (indication)

Free entry.

☎ 04 42 50 14 32

@ lesgirard0208@orange.fr

🌐 fermedubregalon.com

***From 02/01 to 31/12, every Tuesday, Wednesday, Thursday,  
Friday and Saturday between 3 pm and 7 pm.  
Closed exceptionally on 13/07/2022, 15/07/2022,  
16/07/2022, 17/07/2022, 18/07/2022 and July 14th.***





# Activities Wine & Gastronomy

## DOMAINE DU MAS DE REY

C 144 - Route De St Gilles - 13200 Arles



The Domaine du Mas de Rey offers the widest range of rare and local single-variety wines that are a perfect reflection of the Camargue terroir.

RATES (indication)  
Paying

☎ 06 04 53 31 71

☎ 04 90 96 11 84

@ contact@domaine-masderey.com

🌐 www.domaine-masderey.com



## DOMAINE VILLA BAULIEU

Domaine de Beaulieu - Route D14c - 13840 Rognes



RATES (indication)  
Paying

☎ 04 42 50 20 19

@ contact@pgadomaines.com

🌐 www.villabaulieuvignoble.com



## CHÂTEAU DE BEAUPRÉ

D7n Château de Beaupré - 13760 Saint-Cannat



The Château de Beaupré is one of the historic vineyards of the Coteaux d'Aix-en-Provence, just 10 minutes away from Aix town centre. This estate has belonged to the Double barons descendants since 1855.

RATES (indication)  
Free entry for accompanying guides.

☎ 04 42 57 33 59

@ boutique@beaupre.fr

🌐 www.beaupre.fr/



*All year round, daily between 10 am and 7 pm.  
Closed exceptionally on January 1st and December 25th.*

## DOMAINE CHÂTEAU LA COSTE

2750 Route de la Cride - 13610 Le Puy-Sainte-Réparate



Come and discover the Château La Coste wines and learn all about the winegrowing process on a tour of our wine cellar, created by architect Jean Nouvel, then sample the red, white and rosé wines in a tasting session.

RATES (indication)  
Paying

☎ 04 42 61 92 93

@ contact@chateau-la-coste.com

🌐 www.chateau-la-coste.com



*From 01/05 to 30/09  
Opening hours on Monday, Tuesday, Wednesday, Thursday,  
Friday and Saturday between 9 am and 8.30 pm. On Sunday  
between 10 am and 8 pm.*

*From 01/10 to 30/04  
Opening hours daily between 10 am and 6.30 pm.*

## DOMAINE TERRE DE MISTRAL

Route De Peynier - 13790 Rousset



Terre de Mistral is the story of how two families who share the same passion for Provence came together, with a strong desire to share and pass on their expertise.

RATES (indication)  
Free of charge.

☎ 04 42 29 14 84

@ tourisme@terre-de-mistral.com

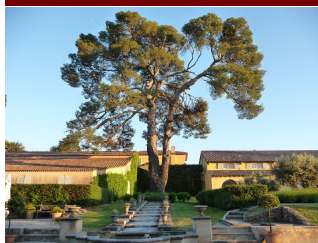
🌐 www.terre-de-mistral.com



*All year long.  
Opening hours on Monday between 2 pm and 7 pm. On  
Tuesday, Wednesday, Thursday, Friday and Saturday between  
9.30 am and 12.30 pm and between 2 pm and 7 pm.  
Closed on Sunday.*

## CHÂTEAU FERRY LACOMBE

2068 Route De Saint Maximin - 13530 Trets



A treasure at the heart of Provence: between the Sainte-Victoire mountain and Mount Aurélien, between Aix-en-Provence and Saint-Maximin-La-Sainte-Baume, you'll find one of the greatest terroirs of Provence, the Vallée de l'Arc.

RATES (indication)  
Nos cuvées de 6,75 euros (IGP Méditerranée rosé) à 28 euros (AOP Côtes Provence Ste Victoire rouge) et produits annexes à partir de 2 euros.

☎ 04 42 29 40 04

@ info@ferrylacombe.com

🌐 ferrylacombe.com



*All year long.  
Open from Monday to Friday: 10 am-12 pm and 2 pm- 6 pm.  
On Saturday : 10 am -6 pm. In summer, closure at 7 pm.  
Closed on Sunday and bank holidays.*

**LA POULE NOIRE RESTAURANT**

61 Rue Sainte - 13001 Marseille

**Restaurant**

Chef Damien Delgado concocts elegant gourmet bistro-style cuisine, serving the great classics of French cuisine, as well as inspirations from his many travels around the world.

**RATES (indication)**  
Paying

**50 seats, 10 terrace place settings**

☎ 04 91 55 68 86

☎ 06 33 93 84 10

@ lapoulenoirerestaurant@gmail.com

🌐 restaurant-lapoule noire.com/



*From 01/01 to 31/12 between 7 pm and 11 pm.  
Closed Monday and Sunday.*

**DÉCOUVERTE DE L'HUILE D'OLIVE EN CUISINE ET COSMÉTIQUE**

13006 Marseille

**Cultural activities**

**RATES (indication)**  
One price: 70 €.

☎ 09 52 82 35 49

*All year round, every Tuesday, Thursday, Friday and Saturday  
between 10 am and 2 pm.*

**DU MARCHÉ À L'ASSIETTE (FROM THE MARKET TO THE TABLE)**

50 cours Julien - 13006 Marseille

**Cultural activities**

The chef will take you on a tour of the market and all the best producers, then it's time for a 3-course meal (starter, main course and dessert) at the restaurant, made using the products selected that morning.

**RATES (indication)**  
One price: 58 €.

☎ 09 52 82 35 49

**GÉRARH RESTAURANT**

50 Cours Julien - 13006 Marseille

**Restaurant**

Gerarh is a restaurant at Cours Julien serving homemade dishes made using local, organic products. It is also a wine cellar, an exhibition venue and a live Jazz music venue.

**RATES (indication)**  
A la carte: 30 €.

☎ 06 19 88 52 93

☎ 09 52 82 35 49

@ contact@gerarh.fr

🌐 gerarh.fr/

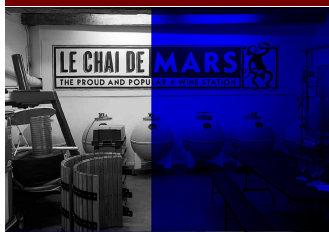
*All year round, every Wednesday between 10 am and 2 pm.*



*Every day throughout the year.  
Closed Monday and Sunday.*

**WINE TASTING AND CULINARY DISCOVERY**

Quai de Rive Neuve - 13007 Marseille

**Cultural activities**

The Chai de Mars is an urban wine tasting cellar where a part of the Mars Wine Station wines are produced. We offer visitors a unique tasting experience, to come and discover the culinary treasures of Marseille's craftspeople.

**RATES (indication)**  
Paying

☎ 06 14 81 49 29

☎ 0767085963

@ lboillot@we-wine.fr

🌐 www.mars-wine-station.com

*From 16/04 to 30/09/2022, daily.*



# Wine growers & cellars

## DOMAINE PEY BLANC

1200 Chemin Du Vallon des Mourgues - 13090 Aix-en-Provence



A friendly place with friendly owners, made even more enjoyable thanks to the superb wines produced on this historic estate.

RATES (indication)

Free access.

☎ 04 42 12 34 76

@ peyblanc@wanadoo.fr

🌐 pey-blanc.fr/

## DOMAINE DU MAS DE REY

C 144 - Route De St Gilles - 13200 Arles



The Domaine du Mas de Rey offers the widest range of rare and local single-variety wines that are a perfect reflection of the Camargue terroir.

RATES (indication)

Paying

☎ 06 04 53 31 71

☎ 04 90 96 11 84

@ contact@domaine-masderey.com

🌐 www.domaine-masderey.com

*From 01/01 to 31/12, every Monday, Tuesday, Wednesday, Thursday, Friday and Saturday. From 9.30am to 12.30pm and from 3pm to 7pm.*



## DOMAINE DES BÉATES

837 Route de Caireval - 13410 Lambesc



The Domaine des Béates is in Lambesc, at the heart of the PDO Aix-en-Provence terroir. The estate boasts 40 hectares of grapevines in the best soil of this village of Provence, north-west of Aix-en-Provence, between Alpilles, Luberon and the Sainte-Victoire mountain.

RATES (indication)

Paying

☎ 04 42 57 07 58

@ contact@lesbeates.com

🌐 www.lesbeates.com

## CHÂTEAU VIRANT

CD 10 - Route de St Chamas - 13680 Lançon-Provence



Winegrowing and olive production estate in an idyllic location surrounded by grapevines and olive trees.

RATES (indication)

Free entry for children < 12 years.

☎ 04 90 42 44 47

@ chateau-virant@wanadoo.fr

🌐 www.chateau-virant.com

*From 02/01 to 31/12, every Monday, Tuesday, Wednesday, Thursday, Friday and Saturday between 10 am and 6 pm. By appointment for other schedules or on bank holidays.*



*All year round, daily.*

## LE SANTENAIRE

Impasse Florida - 13055 Marseille



Production of vintage Vin de Noix (certified Organic by Ecocert).

RATES (indication)

Paying

☎ 04 91 02 64 58

@ Le.santenaire@gmail.com

🌐 fr.le-santenaire.com/

## DOMAINE LE LOUP BLEU

Piconin - 13114 Puylobier



The Domaine le Loup Bleu is in Puylobier, between the Sainte-Victoire mountain to the north and the Auréliens mountains to the south. It is a family-run winegrowing estate producing PDO Côtes de Provence and PDO Côtes de Provence Saint-Victoire, all certified organic.

RATES (indication)

Free entry.

☎ 07 72 55 91 31

@ contact@le-loup-bleu.com

🌐 www.le-loup-bleu.com

*All year round, every Monday, Tuesday, Wednesday, Thursday, Friday and Saturday between 9 am and 6 pm. On Sunday and public holidays by appointment.*

*All year round, daily.*



## DOMAINE CHÂTEAU LA COSTE

2750 Route de la Cride - 13610 Le Puy-Sainte-Réparate



Come and discover the Château La Coste wines and learn all about the winegrowing process on a tour of our wine cellar, created by architect Jean Nouvel, then sample the red, white and rosé wines in a tasting session.

☎ 04 42 61 92 93

@ contact@chateau-la-coste.com

🌐 www.chateau-la-coste.com

RATES (indication)

Paying

*From 01/05 to 30/09*  
**Opening hours on Monday, Tuesday, Wednesday, Thursday, Friday and Saturday between 9 am and 8.30 pm. On Sunday between 10 am and 8 pm.**

*From 01/10 to 30/04*  
**Opening hours daily between 10 am and 6.30 pm.**



## CHÂTEAU BARBANAU

Hameau De Roquefort - 13830 Roquefort-la-Bédoule



One part of the Château Barbanau is classified for the Cassis appellation and the other, Côtes de Provence. This estate is one of the greatest revelations of recent years.

RATES (indication)

Free entry.

☎ 04 42 73 14 60

@ contact@chateau-barbanau.com

🌐 www.chateau-barbanau.com

*All year long.*  
**Opening hours on Monday, Tuesday, Wednesday, Thursday, Friday and Saturday between 10 am and 12 pm and between 3 pm and 6 pm.**  
**Closed on Sunday and bank holidays.**



## DOMAINE VILLA BAULIEU

Domaine de Beaulieu - Route D14c - 13840 Rognes



RATES (indication)

Paying

☎ 04 42 50 20 19

@ contact@pgadomaines.com

🌐 www.villabaulieuvignoble.com



## DOMAINE TERRE DE MISTRAL

Route De Peynier - 13790 Rousset



Terre de Mistral is the story of how two families who share the same passion for Provence came together, with a strong desire to share and pass on their expertise.

RATES (indication)

Free of charge.

☎ 04 42 29 14 84

@ tourisme@terre-de-mistral.com

🌐 www.terre-de-mistral.com

*All year long.*  
**Opening hours on Monday between 2 pm and 7 pm. On Tuesday, Wednesday, Thursday, Friday and Saturday between 9.30 am and 12.30 pm and between 2 pm and 7 pm.**  
**Closed on Sunday.**



## TERRE DE MISTRAL FERME AUBERGE

Route Du Regagnas - CD 56b - 13790 Rousset



### Farmhouse inn

The kitchen team works hard to develop inventive cuisine with fresh and top-quality products at the Ferme-Auberge restaurant. The menu changes regularly depending on the chef's inspirations.

RATES (indication)

A la carte: 14 to 28 €  
 Adult menu: from 36 €  
 Menu of the day: from 19.50 €.

☎ 04 42 29 14 84

@ auberge@terre-de-mistral.com

🌐 www.terre-de-mistral.com



**All year round. From Wednesday to Sunday noon, Friday and Saturday evening.**

## WINE CASINO - BLIND TASTING AND WINE QUIZ

Chemin du Pavillon - 13790 Rousset



### Cultural activities

A fun activity for families or groups of friends, combining wine and olive oil, 2 of the star products of the Domaine Terre de Mistral. Who will win the most tokens in this casino with some rather unusual rules?

RATES (indication)

Adult: 26.40 €.

☎ 04 42 29 14 84

@ tourisme@terre-de-mistral.com

🌐 www.terre-de-mistral.com

**All year round, daily.**



## CHÂTEAU DE BEAUPRÉ

D7n Château de Beaupré - 13760 Saint-Cannat



The Château de Beaupré is one of the historic vineyards of the Coteaux d'Aix-en-Provence, just 10 minutes away from Aix town centre. This estate has belonged to the Double barons descendants since 1855.

☎ 04 42 57 33 59  
 @ boutique@beaupre.fr  
 🌐 www.beaupre.fr/

### RATES (indication)

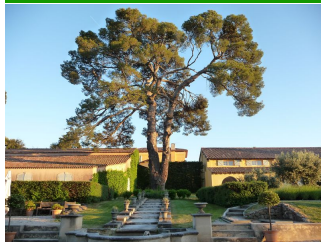
Free entry for accompanying guides.



*All year round, daily between 10 am and 7 pm.  
 Closed exceptionally on January 1st and December 25th.*

## CHÂTEAU FERRY LACOMBE

2068 Route De Saint Maximin - 13530 Trets



A treasure at the heart of Provence: between the Sainte-Victoire mountain and Mount Aurélien, between Aix-en-Provence and Saint-Maximin-La-Sainte-Baume, you'll find one of the greatest terroirs of Provence, the Vallée de l'Arc.

☎ 04 42 29 40 04  
 @ info@ferrylacombe.com  
 🌐 ferrylacombe.com

### RATES (indication)

Nos cuvées de 6,75 euros (IGP Méditerranée rosé) à 28 euros (AOP Côtes Provence Ste Victoire rouge) et produits annexes à partir de 2 euros.

*All year long.  
 Open from Monday to Friday: 10 am-12 pm and 2 pm- 6 pm.  
 On Saturday :10 am -6 pm. In summer, closure at 7 pm.  
 Closed on Sunday and bank holidays.*



## CHÂTEAU HENRI BONNAUD

585 Chemin De la Poudrière - 13100 Le Tholonet



Wines that are just as elegant as Cézanne's paintings are produced at the foot of Sainte-Victoire mountain. In barely ten years, the wines of the Château Henri Bonnaud, produced by Stéphane Spitzglous, have made a name for themselves, and were certified organic in 2010.

☎ 04 42 66 86 28  
 @ contact@chateau-henri-bonnaud.fr  
 🌐 www.chateau-henri-bonnaud.fr

### RATES (indication)

Paying



*All year long.  
 Opening hours on Monday, Tuesday, Wednesday, Thursday,  
 Friday and Saturday between 10 am and 12 pm and between 2  
 pm and 6 pm.  
 Closed on Sunday.*

## MAS DE CADENET

D 57 - 13530 Trets



The Mas de Cadenet is in an exceptional location, with a breathtaking view of Sainte-Victoire mountain.

### RATES (indication)

Visite hebdomadaire: 8 euros/personne-sans réservation. Les mardis et les jeudis à 14h30- Durée: 30 mins

Visite privative: 12 euros/personne-sur réservation ( 4 pers minimum)- Durée: 60 mins

Dégustation gratuite. Octobre à

*All year long.  
 Open from Monday to Saturday: 9.30 am-12.30 pm and 2 pm-  
 6.30 pm. From October to March, closure at 6 pm.  
 Closed on Sunday and bank holidays.*



# Producers

## DISTILLERIE GARAGAI

1053 chemin de la plaine des dés - 13090 Aix-en-Provence



Distillerie Garagai makes unique spirits that are anything but standard. Each vintage captures a spirit that arose in the Montagne Sainte-Victoire hills, the crowning jewel of the Provençal garrigue.

**RATES (indication)**

Free entry.

☎ 06 25 93 12 31

@ contact@distillerie-garagai.fr

🌐 distillerie-garagai.fr/

*All year round, every Monday, Tuesday, Wednesday, Thursday, Friday and Saturday. By appointment.*



## MAISON DU RIZ

Mas de la vigne - 13200 Arles



### Museum

Learn all about Camargue rice growing in a special educational centre. You will be welcomed by a family of passionate rice farmers.

**RATES (indication)**

Full price: 4 €.

☎ 06 31 03 40 11

@ maisonduriz@orange.fr

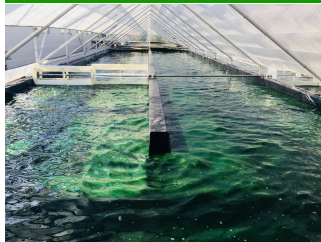
🌐 www.maisonduriz.com/

Free entry for children < 10 years.

*From 01/04 to 30/10  
Opening hours on Monday, Tuesday, Wednesday, Thursday, Friday and Sunday between 9 am and 12.30 pm and between 2 pm and 6 pm. Closed on Saturday. On reservation.*

## LA SPIRULINE DES OLIVIERS (EARL LA PERDRERIE)

3719 Voie Jean Pierre Lyon - 13130 Berre-l'Étang



We are Olivier and Agnès. We produce spirulina, organic citrus fruit, organic apricots and olives to make PDO Aix-en-Provence olive oil on our family-run estate.

**RATES (indication)**

Free entry.

☎ 06 17 98 06 33

@ spirulinedesoliviers@gmail.com

🌐 www.spirulinedesoliviers.com/

*All year round, every Monday and Thursday between 4.30 pm and 6.30 pm.*



## SAFRAN DE CUGES - ANNE JEANJEAN

La ferme du Léopard Vert - Chemin de la boucanière - 13780 Cuges-les-Pins



Organically grown saffron. The fertiliser used is composted horse manure from local stud farms.

**RATES (indication)**

Paying

☎ 07 82 53 61 33

@ safran-de-cuges@laposte.net

🌐 safrandecuges.jimdo.com

*All year round, daily.*



## LA FERME DE CABRIÈRES

480 Chemin De Cabrières - 13410 Lambesc



Red berries producer, all hand-picked and transformed by the owners into sorbets, syrups and jam.

**RATES (indication)**

Free entry.

☎ 07 86 92 48 85

☎ 06 07 12 94 89

@ lafermedecabrieres@gmail.com

🌐 xn-la-ferme-de-cabries-51b.fr/

*From 01/05 to 15/09  
Opening hours daily between 10 am and 12 pm and between 4 pm and 7 pm.*



## CHÂTEAU VIRANT

CD 10 - Route de St Chamas - 13680 Lançon-Provence



Winegrowing and olive production estate in an idyllic location surrounded by grapevines and olive trees.

**RATES (indication)**

Free entry for children < 12 years.

☎ 04 90 42 44 47

@ chateau-virant@wanadoo.fr

🌐 www.chateau-virant.com

*All year round, daily.*





### MOULIN CORNILLE - OLIVE OIL COOPERATIVE MILL IN THE BAUX VALLEY



The Moulin Cornille olive oil mill welcomes you to a 17th-century construction, which has been devoted to making olive oil since the very beginning.

**RATES (indication)**  
Packaging from 25CL to 5L from 24€.

- ☎ 00 33 4 90 54 32 37
- @ contact@moulin-cornille.com
- 🌐 www.moulin-cornille.com

**Every day throughout the year. Closed on Sunday.**  
 - from April to September from Monday to Friday from 9.30am to 12.30pm and from 2pm to 6.30pm / Saturday from 10am to 12.30pm and from 2pm to 6.30pm  
 - from July & August from Monday to Friday from 9.30am to 12.30pm and from 2pm to 7pm / Saturday from 10am to 12.30pm and from 2pm to 7pm / Sunday from 10am to 1pm.  
 - From October to March from Monday to Friday from 9.30am to 12.30pm and from 2pm to 6pm / Saturday from 10am to 12.30pm and from 2pm to 6pm.



### LE MOULIN DES COSTES



Manufacture and sale of traditional olive oil from Pélissanne and the surrounding region. The Moulin des Costes welcomes producers from Pélissanne and the local area to make olive oil that reflects the terroir.

**RATES (indication)**  
Paying

- ☎ 04 90 55 30 00
- @ moulinahuiledescostes@wanadoo.fr
- 🌐 www.moulindescostes.com

**From 01/01 to 31/12**  
**Opening hours on Monday, Tuesday, Wednesday, Thursday, Friday and Saturday between 9 am and 12 pm and between 2 pm and 6 pm.**



### CÔTÉ FISH



Côté Fish is the very first French platform for the sale of extra-fresh fish and seafood from the Mediterranean. Customers are guaranteed products of exceptional quality, delivered to their home straight out of the sea.

**RATES (indication)**  
Paying

- ☎ +33 4 66 71 99 50
- @ contact@cotefish.com
- 🌐 cotefish.fr/

### MOULIN SAINT MICHEL



Since 1744, in Mouriès, in Baux-de-Provence valley, the Moulin Saint Michel has been transforming olives harvested by the olive growers of the Alpilles. The ancient mill has been preserved and is open to visitors for the most authentic of tours.

- ☎ 00 33 4 90 47 50 40
- @ contact@moulinsaintmichel.com
- 🌐 www.moulinsaintmichel.net

**RATES (indication)**  
Adult: 5 € (Guided visit).

Free entry for children < 18 years.

**All year round, daily.**  
**Closed exceptionally on January 1st and December 25th. Monday to Saturday from 9am to 12pm and from 2pm to 6pm.**  
**Annual closure between Christmas and New Year.**



### CAMARGUE COQUILLAGES



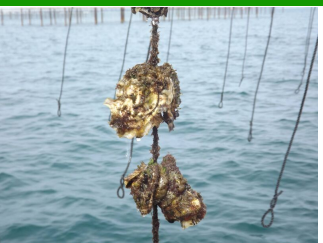
Camargue Coquillages is a company authorised to produce and sell shellfish, in Port Saint Louis, in Camargue. Oyster and mussels producer since 1995. The first producer in the PACA region of France to be organic certified.

- ☎ 04 42 86 03 03
- ☎ 06 86 28 66 98
- @ camargue-coquillages@orange.fr
- 🌐 www.camarguecoquillages.fr

**RATES (indication)**  
Au détail, demi-gros ou gros, venez découvrir les violets de roche, les tellines de Camargue, les palourdes blanche de Camargue, les huîtres creuses Bio de Camargue...

**Every day throughout the year between 9 am and 6 pm. Closed Saturday and Sunday.**

### LAURENT MOREAU



Laurent Moreau is a passionate and inventive oyster farmer. In 2005, this producer decided to focus all his efforts on oyster breeding, to offer consumers top-quality oysters.

- ☎ 06 76 12 65 75
- 🌐 www.huitredcarteau.fr

**RATES (indication)**  
Paying

**All year round, daily.**

### DOMAINE VILLA BAULIEU

Domaine de Beaulieu - Route D14c - 13840 Rognes



RATES (indication)  
Paying

- ☎ 04 42 50 20 19
- @ contact@pgadomaines.com
- 🌐 www.villabaulieuvignoble.com



### LA PASTORALE DU REGAGNAS

Hameau de Kirbon - 5553 Route de Saint Zacharie - 13530 Trets



**Company open to the public**  
Come to this farming estate for an educational experience. Nature and discovery trips organised for school groups.

RATES (indication)  
Paying

- ☎ 06 10 23 22 21
- @ lapastoraleduregagnas@gmail.com



*Every day throughout the year.  
Closed on Monday.*

### PRESSOIRS DE PROVENCE

1397, Chemin de la Crau - Z.A. La Crau - RN 7 - 13670 Saint-Andiol



Company producing 100% natural fruit juices, made using local products.

RATES (indication)  
Paying

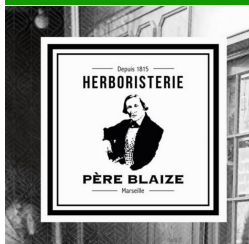
- ☎ 04 90 95 49 54
- @ contact@pressoirs-de-provence.com
- 🌐 www.pressoirs-de-provence.com



*Every day throughout the year between 9.30 am and 12.30 pm.  
Closed on Sunday.  
Closed exceptionally on January 1st, Easter Monday, Feast of the Ascension, Whit Monday, May 1st, May 8th, July 14th, August 15th, November 1st, November 11th and December 25th.*

### HERBORISTERIE DU PÈRE BLAIZE (HERBALIST'S SHOP)

4-6 Rue Méolan - 13001 Marseille



A family tradition, passed down from father to son, to great-granddaughter. This herbalist's shop bears the Living Heritage Company (EPV) label.

RATES (indication)  
Paying

- ☎ 04 91 54 04 01
- 🌐 pereblaize.fr/



*From 02/01 to 31/12, every Tuesday, Wednesday, Thursday, Friday and Saturday between 9.30 am and 6.30 pm.*



## AQUAE MALTAË - BREWERY OF PROVENCE

Rue De l'Ancienne Minoterie - 13090 Aix-en-Provence



Aquae Maltae is craft beer brewed in Aix-en-Provence by 'artistic brewers'.

RATES (indication)  
Paying

- 09 72 88 37 91
- 06 08 47 94 68
- [contact@aquaealtae.com](mailto:contact@aquaealtae.com)
- [www.aquaealtae.com/](http://www.aquaealtae.com/)

## CONFISERIE LÉONARD PARLI - LA GRANDE FABRIQUE (FACTORY) AND SHOP

Pôle d'Activités d'Aix-en-Provence - 95 Rue Famille Laurens - 13090 Aix-en-Provence



Maison Parli is a reference in the world of top-quality confectionery, not only for their 'calissons' of Aix, but also for their range of candied fruit, nougat, pralines, biscuits and chocolates.

RATES (indication)  
Free entry.

- 04 42 52 19 20
- [contact@parli.fr](mailto:contact@parli.fr)
- [www.leonard-parli.com](http://www.leonard-parli.com)

*Du 01/01 au 31/12/2021, tous les lundis, mardis, mercredis, jeudis, vendredis et samedis de 10h à 19h. Visites guidées sur rendez-vous.*



*From 01/10/2021 to 31/12/2022, every Monday, Tuesday, Wednesday, Thursday and Friday between 8 am and 5 pm.*



## DISTILLERIE GARAGAI

1053 chemin de la plaine des dés - 13090 Aix-en-Provence



Distillerie Garagai makes unique spirits that are anything but standard. Each vintage captures a spirit that arose in the Montagne Sainte-Victoire hills, the crowning jewel of the Provençal garrigue.

RATES (indication)  
Free entry.

- 06 25 93 12 31
- [contact@distillerie-garagai.fr](mailto:contact@distillerie-garagai.fr)
- [distillerie-garagai.fr/](http://distillerie-garagai.fr/)

## CONFISERIE D'ENTRECASTEAUX

Les Halles 1889 - 2690 route des Milles - 13510 Éguilles



The Confiserie d'Entrecasteaux is one of the oldest 'calisson' manufacturers that still operates according to traditional, craft production methods. Production workshop, shop, confectionery, pastries and tearoom at the Halles 1889 in Éguilles, near Aix-en-Provence.

RATES (indication)  
Prices not available.

- 04 13 91 24 02
- [contact@calissons-entrecasteaux.com](mailto:contact@calissons-entrecasteaux.com)
- [www.calisson-aix.com](http://www.calisson-aix.com)

*All year round, every Monday, Tuesday, Wednesday, Thursday, Friday and Saturday. By appointment.*



*All year round  
Opening hours on Tuesday, Wednesday, Thursday, Friday and Saturday between 7.30 am and 7.30 pm. On Sunday between 8 am and 2.30 pm.*

## LE SANTENAIRE

Impasse Florida - 13055 Marseille



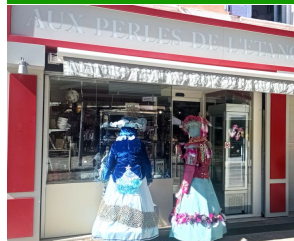
Production of vintage Vin de Noix (certified Organic by Ecocert).

RATES (indication)  
Paying

- 04 91 02 64 58
- [Le.santenaire@gmail.com](mailto:Le.santenaire@gmail.com)
- [fr.le-santenaire.com/](http://fr.le-santenaire.com/)

## AUX PERLES DE L'ETANG

5 Cours du 4 Septembre - 13500 Martigues



Homemade pastries, chocolate, and confectionery. Master pastry chef, chocolatier, confectioner.

RATES (indication)  
Prices not available.

- 04 42 07 02 51

*Every day throughout the year  
Opening hours on Tuesday, Wednesday, Thursday, Friday and Saturday between 7.30 am and 6 pm. On Sunday between 7.30 am and 1 pm. Closed on Monday.*



*All year round, daily.*



**BISCUITERIE CHARLY (BISCUIT FACTORY)**

RN7 - 13670 Saint-Andiol



Come and explore the wonderful world of the Charly Biscuits gourmet village, spread over a surface area of 1,000m<sup>2</sup> alongside the National 7 main road. Plunge into the authentic 1940s ambiance and discover the sweet and savoury delights made at this traditional factory in Provence.

**RATES (indication)**

Free of charge.

*From 01/07 to 31/08 between 9 am and 6.30 pm.  
Closed on Sunday.*

*From 01/09 to 30/09 between 9 am and 6.30 pm.  
Closed on Sunday.*

*From 01/12 to 25/12, daily between 9 am and 6.30 pm.*



☎ 04 90 95 17 18

@ info@biscuits-charly.fr

www www.biscuits-charly.fr

**PRESSOIRS DE PROVENCE**

1397, Chemin de la Crau - Z.A. La Crau - RN 7 - 13670 Saint-Andiol



Company producing 100% natural fruit juices, made using local products.

**RATES (indication)**

Paying

*Every day throughout the year between 9.30 am and 12.30 pm.  
Closed on Sunday.  
Closed exceptionally on January 1st, Easter Monday, Feast of the Ascension, Whit Monday, May 1st, May 8th, July 14th, August 15th, November 1st, November 11th and December 25th.*



☎ 04 90 95 49 54

@ contact@pressoirs-de-provence.com

www www.presseoirs-de-provence.com

**LES NAVETTES DES ACCOULES**

68 Rue Caisserie - 13002 Marseille

**RATES (indication)**

Paying

*All year round, daily between 9.30 am and 7 pm.*

☎ 04 91 90 99 42

@ orsoni.jose@wanadoo.fr

www www.les-navettes-des-accoules.fr

**LES SABLÉS MARSEILLAIS (SHORTBREAD BISCUITS)**

12 Rue De l'Evêché - 13002 Marseille



Once upon a time, there was... Dali... or the story of the shortbread biscuits maker from Marseille...

**RATES (indication)**

Paying

*All year round, daily between 10 am and 7 pm.*

☎ 04 91 52 23 76

☎ 06 88 74 59 04

@ lessablesmarseillais@gmail.com

www www.lessablesmarseillais.com



## AQUAE MALTAE - BREWERY OF PROVENCE

Rue De l'Ancienne Minoterie - 13090 Aix-en-Provence



Aquae Maltae is craft beer brewed in Aix-en-Provence by 'artistic brewers'.

RATES (indication)  
Paying

- 09 72 88 37 91
- 06 08 47 94 68
- contact@aquamaltae.com
- www.aquamaltae.com/



*Du 01/01 au 31/12/2021, tous les lundis, mardis, mercredis, jeudis, vendredis et samedis de 10h à 19h. Visites guidées sur rendez-vous.*

## DISTILLERIE GARAGAI

1053 chemin de la plaine des dés - 13090 Aix-en-Provence



Distillerie Garagai makes unique spirits that are anything but standard. Each vintage captures a spirit that arose in the Montagne Sainte-Victoire hills, the crowning jewel of the Provençal garrigue.

RATES (indication)  
Free entry.

- 06 25 93 12 31
- contact@distillerie-garagai.fr
- distillerie-garagai.fr/



*All year round, every Monday, Tuesday, Wednesday, Thursday, Friday and Saturday. By appointment.*

## MAISON DU RIZ

Mas de la vigne - 13200 Arles



### Museum

Learn all about Camargue rice growing in a special educational centre. You will be welcomed by a family of passionate rice farmers.

RATES (indication)  
Full price: 4 €.

Free entry for children < 10 years.

- 06 31 03 40 11
- maisonduriz@orange.fr
- www.maisonduriz.com/

## SAFRAN DE CUGES - ANNE JEANJEAN

La ferme du Léopard Vert - Chemin de la boucanière - 13780 Cuges-les-Pins



Organically grown saffron. The fertiliser used is composted horse manure from local stud farms.

RATES (indication)  
Paying

- 07 82 53 61 33
- safran-de-cuges@laposte.net
- safrandecuges.jimdo.com



*All year round, daily.*

## CONFISERIE D'ENTRECASTEAUX

Les Halles 1889 - 2690 route des Milles - 13510 Éguilles



The Confiserie d'Entrecasteaux is one of the oldest 'calisson' manufacturers that still operates according to traditional, craft production methods. Production workshop, shop, confectionery, pastries and tearoom at the Halles 1889 in Éguilles, near Aix-en-Provence.

RATES (indication)  
Prices not available.

- 04 13 91 24 02
- contact@calissons-entrecasteaux.com
- www.calisson-aix.com

## LA FERME DE CABIÈRES

480 Chemin De Cabrières - 13410 Lambesc



Red berries producer, all hand-picked and transformed by the owners into sorbets, syrups and jam.

RATES (indication)  
Free entry.

- 07 86 92 48 85
- 06 07 12 94 89
- lafermedecabrieres@gmail.com
- xn-la-ferme-de-cabrieres-51b.fr/



*All year round  
Opening hours on Tuesday, Wednesday, Thursday, Friday and Saturday between 7.30 am and 7.30 pm. On Sunday between 8 am and 2.30 pm.*

*From 01/05 to 15/09  
Opening hours daily between 10 am and 12 pm and between 4 pm and 7 pm.*

## CHÂTEAU VIRANT

CD 10 - Route de St Chamas - 13680 Lançon-Provence



Winegrowing and olive production estate in an idyllic location surrounded by grapevines and olive trees.

### RATES (indication)

Free entry for children < 12 years.

☎ 04 90 42 44 47

@ chateau-virant@wanadoo.fr

🌐 www.chateau-virant.com



All year round, daily.

## LE SANTENAIRE

Impasse Florida - 13055 Marseille



Production of vintage Vin de Noix (certified Organic by Ecocert).

### RATES (indication)

Paying

☎ 04 91 02 64 58

@ Le.santenaire@gmail.com

🌐 fr.le-santenaire.com/



All year round, daily.

## CAP COURONNE PÊCHE

12 Belvédère du Baou - 13500 Martigues



### Associations

Fishing trip at sea or from the shore with a professional guide (Blue Coast, Gulf of Fos and Camargue).

### RATES (indication)

- 1 hour of shore fishing, initiation and improvement, from 30 euros / hour

☎ 06 22 92 34 44

@ vincentgarciaguidepeche@outlook.fr

🌐 www.capcouronnepeche.fr



All year round.

## MOULIN CORNILLE - OLIVE OIL COOPERATIVE MILL IN THE BAUX VALLEY

Rue Charloun Rieu - 13520 Maussane-les-Alpilles



The Moulin Cornille olive oil mill welcomes you to a 17th-century construction, which has been devoted to making olive oil since the very beginning.

### RATES (indication)

Packaging from 25CL to 5L from 24€.

☎ 00 33 4 90 54 32 37

@ contact@moulin-cornille.com

🌐 www.moulin-cornille.com

*Every day throughout the year.*

*Closed on Sunday.*

*- from April to September from Monday to Friday from 9.30am to 12.30pm and from 2pm to 6.30pm / Saturday from 10am to 12.30pm and from 2pm to 6.30pm*

*- from July & August from Monday to Friday from 9.30am to 12.30pm and from 2pm to 7pm / Saturday from 10am to 12.30pm and from 2pm to 7pm / Sunday from 10am to 1pm.*

*- From October to March from Monday to Friday from 9.30am to 12.30pm and from 2pm to 6pm / Saturday from 10am to 12.30pm and from 2pm to 6pm.*



## MOULIN SAINT MICHEL

30 cours Paul Revoil - 13890 Mouriès



Since 1744, in Mouriès, in Baux-de-Provence valley, the Moulin Saint Michel has been transforming olives harvested by the olive growers of the Alpilles. The ancient mill has been preserved and is open to visitors for the most authentic of tours.

### RATES (indication)

Adult: 5 € (Guided visit).

Free entry for children < 18 years.

☎ 00 33 4 90 47 50 40

@ contact@moulinsaintmichel.com

🌐 www.moulinsaintmichel.net



*All year round, daily.  
Closed exceptionally on January 1st and December 25th.  
Monday to Saturday from 9am to 12pm and from 2pm to 6pm.*

*Annual closure between Christmas and New Year.*

## LE MOULIN DES COSTES

445 Chemin De Saint-Pierre - 13330 Pélissanne



Manufacture and sale of traditional olive oil from Pélissanne and the surrounding region. The Moulin des Costes welcomes producers from Pélissanne and the local area to make olive oil that reflects the terroir.

### RATES (indication)

Paying

☎ 04 90 55 30 00

@ moulinahuiledescostes@wanadoo.fr

🌐 www.moulindescostes.com



*From 01/01 to 31/12  
Opening hours on Monday, Tuesday, Wednesday, Thursday,  
Friday and Saturday between 9 am and 12 pm and between 2  
pm and 6 pm.*



## CAMARGUE COQUILLAGES

They St Antoine l'Ermite - Zone du Mazet - 13230 Port-Saint-Louis-du-Rhône



Camargue Coquillages is a company authorised to produce and sell shellfish, in Port Saint Louis, in Camargue. Oyster and mussels producer since 1995. The first producer in the PACA region of France to be organic certified.

### RATES (indication)

Au détail, demi-gros ou gros, venez découvrir les violets de roche, les tellines de Camargue, les palourdes blanche de Camargue, les huîtres creuses Bio de Camargue...

☎ 04 42 86 03 03

☎ 06 86 28 66 98

@ camargue-coquillages@orange.fr

🌐 www.camarguecoquillages.fr

*Every day throughout the year between 9 am and 6 pm.  
Closed Saturday and Sunday.*

## DELTA FISHING

Bassin Central - 13230 Port-Saint-Louis-du-Rhône



### Service providers

Come on a unique adventure with us!  
Cyril Gressot is a fishing guide and instructor, specialised in tuna and leerfish fishing with lures, and captain of the IGFA. He will be your fishing instructor/guide and will take you on a discovery of deep-sea fishing.

☎ 06 60 41 94 93

@ cyril.gressot@delta-fishing.fr

🌐 www.delta-fishing.fr/

### RATES (indication)

Entre 225€ et 250€

*From 01/04 to 30/11.*

## DOMAINE LE LOUP BLEU

Piconin - 13114 Puylobier



The Domaine le Loup Bleu is in Puylobier, between the Sainte-Victoire mountain to the north and the Auréliens mountains to the south. It is a family-run winegrowing estate producing PDO Côtes de Provence and PDO Côtes de Provence Saint-Victoire, all certified organic.

### RATES (indication)

Free entry.

☎ 07 72 55 91 31

@ contact@le-loup-bleu.com

🌐 www.le-loup-bleu.com

*All year round, every Monday, Tuesday, Wednesday, Thursday, Friday and Saturday between 9 am and 6 pm.  
On Sunday and public holidays by appointment.*

## DOMAINE CHÂTEAU LA COSTE

2750 Route de la Cride - 13610 Le Puy-Sainte-Réparate



Come and discover the Château La Coste wines and learn all about the winegrowing process on a tour of our wine cellar, created by architect Jean Nouvel, then sample the red, white and rosé wines in a tasting session.

### RATES (indication)

Paying

☎ 04 42 61 92 93

@ contact@chateau-la-coste.com

🌐 www.chateau-la-coste.com

*From 01/05 to 30/09  
Opening hours on Monday, Tuesday, Wednesday, Thursday, Friday and Saturday between 9 am and 8.30 pm. On Sunday between 10 am and 8 pm.*

*From 01/10 to 30/04  
Opening hours daily between 10 am and 6.30 pm.*



## DOMAINE VILLA BAULIEU

Domaine de Beaulieu - Route D14c - 13840 Rognes



### RATES (indication)

Paying

☎ 04 42 50 20 19

@ contact@pgadomaines.com

🌐 www.villabaulieuvignoble.com

## CHÂTEAU BARBANAU

Hameau De Roquefort - 13830 Roquefort-la-Bédoule



One part of the Château Barbanau is classified for the Cassis appellation and the other, Côtes de Provence. This estate is one of the greatest revelations of recent years.

### RATES (indication)

Free entry.

☎ 04 42 73 14 60

@ contact@chateau-barbanau.com

🌐 www.chateau-barbanau.com

*All year long.  
Opening hours on Monday, Tuesday, Wednesday, Thursday, Friday and Saturday between 10 am and 12 pm and between 3 pm and 6 pm.  
Closed on Sunday and bank holidays.*



## BISCUITERIE CHARLY (BISCUIT FACTORY)

RN7 - 13670 Saint-Andiol



Come and explore the wonderful world of the Charly Biscuits gourmet village, spread over a surface area of 1,000m<sup>2</sup> alongside the National 7 main road. Plunge into the authentic 1940s ambiance and discover the sweet and savoury delights made at this traditional factory in Provence.

### RATES (indication)

Free of charge.

*From 01/07 to 31/08 between 9 am and 6.30 pm.  
Closed on Sunday.*

*From 01/09 to 30/09 between 9 am and 6.30 pm.  
Closed on Sunday.*

*From 01/12 to 25/12, daily between 9 am and 6.30 pm.*



☎ 04 90 95 17 18

@ info@biscuits-charly.fr

🌐 www.biscuits-charly.fr

## PRESSOIRS DE PROVENCE

1397, Chemin de la Crau - Z.A. La Crau - RN 7 - 13670 Saint-Andiol



Company producing 100% natural fruit juices, made using local products.

### RATES (indication)

Paying

☎ 04 90 95 49 54

@ contact@pressoirs-de-provence.com

🌐 www.presseoirs-de-provence.com

*Every day throughout the year between 9.30 am and 12.30 pm.  
Closed on Sunday.*

*Closed exceptionally on January 1st, Easter Monday, Feast of the Ascension, Whit Monday, May 1st, May 8th, July 14th, August 15th, November 1st, November 11th and December 25th.*



## CHÂTEAU DE BEAUPRÉ

D7n Château de Beaupré - 13760 Saint-Cannat



The Château de Beaupré is one of the historic vineyards of the Coteaux d'Aix-en-Provence, just 10 minutes away from Aix town centre. This estate has belonged to the Double barons descendants since 1855.

### RATES (indication)

Free entry for accompanying guides.

*All year round, daily between 10 am and 7 pm.  
Closed exceptionally on January 1st and December 25th.*



☎ 04 42 57 33 59

@ boutique@beaupre.fr

🌐 www.beaupre.fr/

## CHÂTEAU HENRI BONNAUD

585 Chemin De la Poudrière - 13100 Le Tholonet



Wines that are just as elegant as Cézanne's paintings are produced at the foot of Sainte-Victoire mountain. In barely ten years, the wines of the Château Henri Bonnaud, produced by Stéphane Spitzglous, have made a name for themselves, and were certified organic in 2010.

### RATES (indication)

Paying

*All year long.  
Opening hours on Monday, Tuesday, Wednesday, Thursday, Friday and Saturday between 10 am and 12 pm and between 2 pm and 6 pm.  
Closed on Sunday.*



☎ 04 42 66 86 28

@ contact@chateau-henri-bonnaud.fr

🌐 www.chateau-henri-bonnaud.fr

## LA PASTORALE DU REGAGNAS

Hameau de Kirbon - 5553 Route de Saint Zacharie - 13530 Trets



### Company open to the public

Come to this farming estate for an educational experience. Nature and discovery trips organised for school groups.

### RATES (indication)

Paying

*Every day throughout the year.  
Closed on Monday.*



☎ 06 10 23 22 21

@ lapastoraleduregagnas@gmail.com

## MAS DE CADENET

D 57 - 13530 Trets



The Mas de Cadenet is in an exceptional location, with a breathtaking view of Sainte-Victoire mountain.

### RATES (indication)

Visite hebdomadaire: 8 euros/personne-sans réservation. Les mardis et les jeudis à 14h30- Durée: 30 mins

Visite privative: 12 euros/personne-sur réservation ( 4 pers minimum)- Durée: 60 mins

Dégustation gratuite. Octobre à

*All year long.  
Open from Monday to Saturday: 9.30 am-12.30 pm and 2 pm-6.30 pm. From October to March, closure at 6 pm.  
Closed on Sunday and bank holidays.*



☎ 04 42 29 21 59

@ boutique@masdecadenet.fr

🌐 masdecadenet.fr



### DÉCOUVERTE DE L'HUILE D'OLIVE EN CUISINE ET COSMÉTIQUE

13006 Marseille



#### Cultural activities

#### RATES (indication)

One price: 70 €.

📞 09 52 82 35 49

*All year round, every Tuesday, Thursday, Friday and Saturday between 10 am and 2 pm.*

### DU MARCHÉ À L'ASSIETTE (FROM THE MARKET TO THE TABLE)

50 cours Julien - 13006 Marseille



#### Cultural activities

The chef will take you on a tour of the market and all the best producers, then it's time for a 3-course meal (starter, main course and dessert) at the restaurant, made using the products selected that morning.

#### RATES (indication)

One price: 58 €.

📞 09 52 82 35 49

*All year round, every Wednesday between 10 am and 2 pm.*

# Markets & Events

## FESTIVAL DE LA CAMARGUE ET DU DELTA DU RHÔNE

13200 Arles



The Festival de la Camargue organising committee pulls out all the stops to offer an action-packed programme of events, in complete safety.

**RATES (indication)**

Paying

☎ 06 79 31 60 22

@ contact@festival-camargue.fr

🌐 festival-camargue.fr/

*From Thursday 25 to Tuesday 30 May.*

## LAURENT MOREAU

They Saint Antoine l'Ermite - Mas de détrocage - 13230 Port-Saint-Louis-du-Rhône



Laurent Moreau is a passionate and inventive oyster farmer. In 2005, this producer decided to focus all his efforts on oyster breeding, to offer consumers top-quality oysters.

**RATES (indication)**

Paying

☎ 06 76 12 65 75

🌐 www.huitredcarteau.fr

*All year round, daily.*

## GÉRARH RESTAURANT

50 Cours Julien - 13006 Marseille



### Restaurant

Gerarh is a restaurant at Cours Julien serving homemade dishes made using local, organic products. It is also a wine cellar, an exhibition venue and a live Jazz music venue.

**RATES (indication)**

A la carte: 30 €.

☎ 06 19 88 52 93

☎ 09 52 82 35 49

@ contact@gerarh.fr

🌐 gerarh.fr/

*Every day throughout the year.  
Closed Monday and Sunday.*



# Restaurants & inns

## GAODINA RESTAURANT

1075 Chemin Du Mont Robert - 13090 Aix-en-Provence



### Restaurant

The chef Yannis Lissari provides inventive and environmentally-friendly Mediterranean cuisine using a subtle blend of organic and local ingredients!

### RATES (indication)

Entrée : 7 - 15€

Plat : 17 - 30€

Dessert : 7,5€ - 9€.

**100 seats, 100 terrace place settings**

☎ 06 65 67 53 26

@ contact@gadina.com

🌐 www.gadina.com/



*From 09/06/2021 to 31/12/2022, daily.*

## LE ART RESTAURANT - CHÂTEAU DE LA GAUDE

3913 Route Des Pinchinats - 13090 Aix-en-Provence



### Restaurant

Within just months of opening Le Art, the front of house and kitchen teams were awarded a Michelin star.

### RATES (indication)

Adult menu: 97 to 185 €.

**30 seats**

☎ 04 84 93 09 30

@ contact@chateaudelagaude.com

🌐 chateaudelagaude.com/



*From 01/01 to 31/12/2022, every Wednesday, Thursday, Friday, Saturday and Sunday.*

## MAS DE PEINT

Le Sambuc - RD 36 - Camargue - 13200 Arles



### Restaurant

Right at the heart of the unspoilt and hidden part of the Camargue.

### RATES (indication)

A la carte: 29 €

Adult menu: 59 to 69 €.

**35 seats, 30 terrace place settings**

☎ 04 90 97 20 62

@ contact@masdepeint.com

🌐 www.masdepeint.com



*From 08/04 to 31/10/2022, daily.*

## LE PRÉ GOURMAND RESTAURANT

175 Avenue Max Dormoy - 13630 Eyragues



### Restaurant

The restaurant serves elegant dishes in an exquisite dining room and on the beautiful outdoor terrace.

### RATES (indication)

A la carte: 26 to 32 €

Adult menu: 38 to 82 €.

**30 seats, 30 terrace place settings**

☎ 00 33 4 90 94 52 63

@ contact@lepre-gourmand.com

🌐 www.lepre-gourmand.com/en/



*Every day throughout the year.  
Closed on Monday.  
Closed Saturday lunch and Sunday dinner.  
Closed 15 days in November and 15 days in January.*

## LES SENS DE LA TOUPINE RESTAURANT

Rue Mireille - Miramas le Vieux - 13140 Miramas



### Restaurant

This restaurant is at the heart of the medieval village of Miramas-le-Vieux, serving gourmet bistro-style, homemade cuisine, that respects the seasons and gives priority to local products.

### RATES (indication)

Menu: de 28 € à 34 €

Carte: de 11 € à 20 €.

**38 seats, 40 terrace place settings**

☎ 04 90 58 21 94

@ lessensdelatoupine@gmail.com

🌐 www.les-sens-de-la-toupine-restaurant-miramas.com/



*All year round, daily.*

## LES ARCADES RESTAURANT

Chemin Pied Gautier - RN 7 - 13660 Orgon



### Restaurant

Creative cuisine and specialities of Provence.

### RATES (indication)

Paying

**60 seats, 60 terrace place settings**

☎ 04 90 73 34 40

@ contact@restaurant-arcades-orgon.com

🌐 www.restaurant-arcades-orgon.com/



*From 01/01 to 31/12, every Monday, Tuesday, Thursday, Friday, Saturday and Sunday.*



**DOMAINE CHÂTEAU LA COSTE**  
2750 Route de la Cride - 13610 Le Puy-Sainte-Réparate



Come and discover the Château La Coste wines and learn all about the winegrowing process on a tour of our wine cellar, created by architect Jean Nouvel, then sample the red, white and rosé wines in a tasting session.

- ☎ 04 42 61 92 93
- @ contact@chateau-la-coste.com
- 🌐 www.chateau-la-coste.com

**RATES (indication)**  
Paying

*From 01/05 to 30/09*  
Opening hours on Monday, Tuesday, Wednesday, Thursday, Friday and Saturday between 9 am and 8.30 pm. On Sunday between 10 am and 8 pm.



*From 01/10 to 30/04*  
Opening hours daily between 10 am and 6.30 pm.

**LE MAS BOTTERO** ★  
2340 Route d'Aix-en-Provence - 13760 Saint-Cannat



**Restaurant**  
Le Mas Bottero is 15 minutes away from Aix-en-Provence, at the heart of the Coteaux d'Aix and just on the outskirts of the Luberon mountains. The chef, Nicolas Bottero, invites you to come and sample the flavours of southern France thanks to his very personal and refined cuisine which showcases the superb terroir of Provence.



**35 seats, 35 terrace place settings**

- ☎ 04 42 67 19 18
- @ contact@lemasbottero.com
- 🌐 lemasbottero.com

**RATES (indication)**  
Adult menu: 30 to 120 €.



*From 01/01 to 31/12/2022, daily.*

**LA POULE NOIRE RESTAURANT**  
61 Rue Sainte - 13001 Marseille



**Restaurant**  
Chef Damien Delgado concocts elegant gourmet bistro-style cuisine, serving the great classics of French cuisine, as well as inspirations from his many travels around the world.



**50 seats, 10 terrace place settings**

- ☎ 04 91 55 68 86
- ☎ 06 33 93 84 10
- @ lapoulenoirerestaurant@gmail.com
- 🌐 restaurant-lapoulenoire.com/

**RATES (indication)**  
Paying

*From 01/01 to 31/12 between 7 pm and 11 pm.*  
Closed Monday and Sunday.



**TERRE DE MISTRAL FERME AUBERGE**  
Route Du Regagnas - CD 56b - 13790 Rousset



**Farmhouse inn**  
The kitchen team works hard to develop inventive cuisine with fresh and top-quality products at the Ferme-Auberge restaurant. The menu changes regularly depending on the chef's inspirations.

**50 seats, 50 terrace place settings**

- ☎ 04 42 29 14 84
- @ auberge@terre-de-mistral.com
- 🌐 www.terre-de-mistral.com

**RATES (indication)**  
A la carte: 14 to 28 €  
Adult menu: from 36 €  
Menu of the day: from 19.50 €.



*All year round. From Wednesday to Sunday noon; Friday and Saturday evening.*

**LES GIRELLES RESTAURANT**  
15 Rue Frédéric Mistral - 13960 Sausset-les-Pins



**Restaurant**  
On the magnificent blue coast, at the seaside, come and take in the peaceful atmosphere at this charming restaurant.

**40 seats, 40 terrace place settings**

- ☎ 04 42 45 26 16
- @ contact@restaurantlesgirelles.fr
- 🌐 www.restaurant-les-girelles.fr

**RATES (indication)**  
Carte : de 25€ à 85€



*All year round, daily.*

**LE PAIN À L'AIL**  
5 rue de La Tour - 13001 Marseille



**Restaurant**  
**RATES (indication)**  
Adult menu: 11.90 €.

**30 seats, 20 terrace place settings**

- ☎ 09 51 98 23 71
- @ painalail.contact@gmail.com

*From 02/01 to 31/12 between 10 am and 6 pm.*  
Closed on Sunday.



## DÉCOUVERTE DE L'HUILE D'OLIVE EN CUISINE ET COSMÉTIQUE

13006 Marseille



### Cultural activities

#### RATES (indication)

One price: 70 €.

☎ 09 52 82 35 49

## DU MARCHÉ À L'ASSIETTE (FROM THE MARKET TO THE TABLE)

50 cours Julien - 13006 Marseille



### Cultural activities

The chef will take you on a tour of the market and all the best producers, then it's time for a 3-course meal (starter, main course and dessert) at the restaurant, made using the products selected that morning.

#### RATES (indication)

One price: 58 €.

☎ 09 52 82 35 49

*All year round, every Tuesday, Thursday, Friday and Saturday between 10 am and 2 pm.*

*All year round, every Wednesday between 10 am and 2 pm.*

## GÉRARH RESTAURANT

50 Cours Julien - 13006 Marseille



### Restaurant

Gerarh is a restaurant at Cours Julien serving homemade dishes made using local, organic products. It is also a wine cellar, an exhibition venue and a live Jazz music venue.

#### RATES (indication)

A la carte: 30 €.

☎ 06 19 88 52 93

☎ 09 52 82 35 49

@ contact@gerarh.fr

🌐 gerarh.fr/

## SEPIA

Jardin de la Colonne - 2 Rue Vauvenargues - 13007 Marseille



### Restaurant

The Sepia restaurant opened its doors in March 2017, close to the Notre-Dame-de-la-Garde basilica and at the top of Puget hill, in the Jardin des Colonnes.

#### RATES (indication)

Menu adulte : 38€

**50 seats, 180 terrace place settings**

☎ 09 83 82 67 27

@ contact@restaurant-sepia.fr

🌐 restaurant-sepia.fr/

*From 02/01/2021 to 31/12/2022  
Opening hours on Tuesday, Wednesday, Thursday, Friday and Saturday between 9.30 am and 3 pm and between 6 pm and 11 pm.*

## TABI

165 Corniche Kennedy - 13007 Marseille



### Restaurant

Japanese fine-dining restaurant in Marseille where 'The dishes will whisk you away to Japan'.

#### RATES (indication)

Menu adulte : de 79€ à 125€

**50 seats**

☎ 04 91 22 09 33

@ restaurant.tabi@gmail.com

🌐 www.restauranttabi.com

*From 01/01 to 31/12/2022  
Opening hours on Tuesday, Wednesday, Thursday, Friday and Saturday between 12 pm and 2 pm and between 7 pm and 9.30 pm.  
Closed Monday and Sunday.*

## AIX & TERRA RESTAURANT AND DELICATESSEN

Centre Prado 3ème étage - 41 bd Michelet - 13008 Marseille



### Restaurant

Aix & Terra showcases the flavours of Provence by combining delicious seasonal dishes and delicatessen products. The selection of tapas is a great way to discover the products.

#### RATES (indication)

A la carte: from 6.50 €

Adult menu: 14.90 €

Child menu: 11.50 €

Menu of the day: from 17 €.

**35 seats, 24 terrace place settings**

☎ 04 91 85 69 24

🌐 www.aixeterra.com/restaurants/aix-terra-marseille/

*From 01/01 to 31/12 between 9.30 am and 7 pm.  
Closed on Sunday.*

# Major touristic sights

## CEZANNE'S STUDIO

9 Avenue Paul Cézanne - 13090 Aix-en-Provence



### Museum

Cézanne's studio, also known as Atelier des Lauves is a veritable place of memory, marked by Cézanne's imprint. It allows to discover the familiar objects of the painter and his artistic preferences.

### RATES (indication)

Access to the Cézanne workshop enclosure is subject to the control of the Health Pass (Vaccination proof or a recent 48h negative test

**From 01/06 to 30/09/2022, daily.**  
Everyday from 9.30am till 6pm.

**From 01/10 to 31/12/2022, every Tuesday, Wednesday, Thursday, Friday and Saturday.**  
Closed exceptionally on December 25th.  
From 9.30am till 12.30pm and from 2pm till 5pm.



☎ 04 42 21 06 53

@ infos@atelier-cezanne.com

www.cezanne-en-provence.com/

## MEMORIAL SITE OF LES MILLES CAMP

40 Chemin De la Badesse - 13090 Aix-en-Provence



### Museum

A large French internment and deportation camp (1939-1942) still intact and accessible to the public, the Camp des Milles now houses an important historical museum, with educational and cultural purposes.

### RATES (indication)

Full price: 9.50 €  
Reduced price: 7.50 €.

Free entry for children < 9 years, press, teachers.

**From 01/01 to 31/12, daily between 10 am and 7 pm.**  
Closed exceptionally on January 1st, May 1st and December 25th.  
Ticket office closes at 5.30 pm.



☎ 04 42 39 17 11

@ contact@campdesmilles.org

www.campdesmilles.org

## MUSEUM OF THE PAVILLON DE VENDÔME

13, rue de la Molle ou - 32 Rue Célony - 13090 Aix-en-Provence



### Museum

Beautiful atlantes on the façade announce this classical style "folly" which was built in 1665 by Pierre Pavillon and Antoine Matisse for the Duke of Vendome, governor of Provence and cousin of Louis XIV.

### RATES (indication)

From 16/10/2021 to 14/04/2022  
Full price: 3.70 €.

From 15/04 to 15/10/2022  
Full price: 3.70 €.

**From 15/04 to 15/10/2022.**  
Closed on Tuesday.  
Closed exceptionally on May 1st.  
From 10am to 12.30pm and from 1.30pm to 6pm.



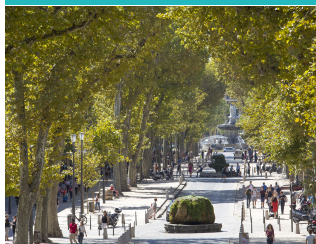
☎ 04 42 91 88 75

@ animationpavillon@mairie-aixenprovence.fr

www.aixenprovence.fr

## THE COURS MIRABEAU

Cours Mirabeau - 13090 Aix-en-Provence



### Historic site and monument

440 meters long and 42 meters wide, the Cours Mirabeau is the link between the Mazarin district to the south and the old commercial city to the north. Today, it is one of the most frequented and lively places in Aix en Provence.

### RATES (indication)

Free access.

☎ 04 42 91 90 00

www.aixenprovence.fr

## THE OLD TOWN OF AIX-EN-PROVENCE, ITS SQUARES AND ITS PRIVATE MANSIONS

13090 Aix-en-Provence



### Historic site and monument

During your escapade in the city of Aix-en-Provence, you will be invited to take a trip back in time. Your steps will lead you to an exceptional architectural and cultural heritage.

### RATES (indication)

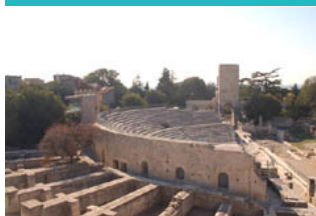
Free access.

☎ 04 42 91 90 00

www.aixenprovence.fr

## ANCIENT THEATRE

Rue De la Calade - 13200 Arles



### Historic site and monument

Date: End of the 1st century BC  
Period: Ancient times  
Type: Public Culture Architecture  
Status: Property of the City of Arles  
Listed as a Historical Monument (1840), Unesco World Heritage Site (1981).

### RATES (indication)

Admission: from 7€ to 9€.

**From 01/03 to 30/04, daily between 9 am and 6 pm.**

**From 01/05 to 30/09, daily between 9 am and 7 pm.**  
Closed exceptionally on May 1st.

**From 01/10 to 31/10, daily between 9 am and 6 pm.**

**From 02/11 to 28/02, daily between 10.30 am and 4.30 pm.**  
Closed exceptionally on January 1st and December 25th.  
Last entry 16h.



☎ 04 90 18 41 20

@ ot-arles@arlestourisme.com



## CAPELIÈRE - NATIONAL NATURE PROTECTION SOCIETY - CAMARGUE NATIONAL RESERVE

La Capelière - C 134 de Fiérouse - 13200 Arles



### Interpretation Centre

On the banks of the Vaccarès, La Capelière was opened in 1979 in a former Camargue farmhouse surrounded by marshes. Nature trails, nature information center, exhibitions, the Capelière is also the administrative center of the Natural Reserve of Camargue.

### RATES (indication)

From 01/10/2020 to 31/03/2021  
Full price: 4 €  
Reduced price: 2 €.

*From 01/04 to 30/09, every Wednesday, Saturday and Sunday between 9.30 am and 5.30 pm.*

*From 01/10 to 31/03.  
Closed on Tuesday.*

☎ 04 90 97 00 97

@ reservedecamargue@espaces-nat  
urels.fr

www.snpn.com/reservedecamarg  
ue



## DOMAINE DE LA PALISSADE

13200 Arles



### Interpretation Centre

Located between the sea and the Rhône, the Domaine de la Palissade, a site belonging to the Coastal Conservatory, is located outside the dikes, which gives it a particular ecological interest, with specific flora and fauna.

*From 01/07 to 30/09/2022, daily between 9 am and 6 pm.*

*From 01/10 to 31/10/2022, daily between 9 am and 5 pm.*

*From 01/11 to 30/11/2022 between 9 am and 5 pm.  
Closed Monday and Tuesday.  
Closed exceptionally on November 11th.*

*From 02/02 to 28/02/2023 between 9 am and 5 pm.  
Closed Monday and Tuesday.*

*From 01/03 to 30/06/2023, daily between 9 am and 5 pm.  
Closed exceptionally on May 1st.*

☎ 04 42 86 81 28

@ palissade@parc-camargue

www.palissade.fr



## PLACE DU FORUM

Place Du Forum - 13200 Arles



### Historic site and monument

### RATES (indication)

Paying

☎ 04 90 18 41 20

@ ot-arles@arlestourisme.com

www.arlestourisme.com

## CLOISTER OF ST. TROPHIME

Place De la Republique - 13200 Arles



### Historic site and monument

Built in the middle of the Middle Ages, between the 12th and 14th centuries, the cloister Saint Trophime is classified as a Historical Monument (1846 and 1943) and a Unesco World Heritage Site (1981)

☎ 04 90 18 41 20

@ ot-arles@arlestourisme.com

www.arlestourisme.com

### RATES (indication)

Admission: from 4.5€ to 5.5€.

*From 01/03 to 30/04, daily between 9 am and 6 pm.*

*From 01/05 to 30/09, daily between 9 am and 7 pm.  
Closed exceptionally on May 1st.*

*From 01/10 to 31/10, daily between 9 am and 6 pm.*

*From 02/11 to 28/02, daily between 10.30 am and 4.30 pm.  
Closed exceptionally on January 1st and December 25th.  
Last entry 16h.*



## MONTMAJOUR ABBEY

Route De Fontvieille - 13200 Arles



### Historic site and monument

Located at the gates of Arles, the Benedictine abbey is an example of a monument that testifies to nearly 8 centuries of history and architecture in Provence intended for a community of 50 to 80 monks.

☎ 04 90 54 64 17

@ abbaye-de-montmajour@monume  
nts-nationaux.fr

www.abbaye-montmajour

### RATES (indication)

Full price: 6 €

*From 01/05 to 31/05, daily between 10 am and 5 pm.  
Closed exceptionally on May 1st.  
Last admission at 4pm.*

*From 01/06 to 30/09, daily between 10 am and 6.30 pm.  
Last admission at 5:30 pm.*

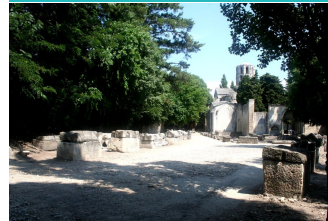
*From 01/10 to 30/04 between 10 am and 5 pm.  
Closed on Monday.*

*Closed exceptionally on January 1st and December 25th.  
Last admission at 4pm.*



## THE ALYSCAMPS

Avenue Des Alyscamps - 13200 Arles



### Historic site and monument

In Antiquity, cemeteries were outside the city walls and along road routes. From the beginning of the Empire, incineration graves, sarcophagi and mausoleums were erected on the outskirts of the Via Aurelia, constituting a vast necropolis.

☎ 04 90 18 41 20

@ ot-arles@arlestourisme.com

www.arlestourisme.com

### RATES (indication)

Admission: from 2.5€ to 4.5€

*From 01/03 to 30/04, daily between 9 am and 6 pm.*

*From 01/05 to 30/09, daily between 9 am and 7 pm.  
Closed exceptionally on May 1st.*

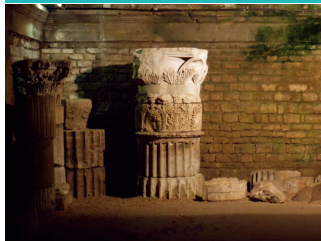
*From 01/10 to 31/10, daily between 9 am and 6 pm.*

*From 02/11 to 28/02, daily between 10.30 am and 4.30 pm.  
Closed exceptionally on January 1st and December 25th.  
Last entry 16h.*



## THE FORUM'S CRYPTOPORTICES

Hôtel de ville - Place De la République - 13200 Arles



### Historic site and monument

The cryptoporticoes form the base, the invisible part of the forum, the central public square of the Roman city. Little is known about the Arles forum itself. Nothing remains of its layout and decoration.

☎ 04 90 18 41 20

@ ot-arles@arlestourisme.com

www www.arlestourisme.com

### RATES (indication)

Admission: from 3.6€ to 4.5€.

*From 01/03 to 30/04, daily between 9 am and 6 pm.*

*From 01/05 to 30/09, daily between 9 am and 7 pm.  
Closed exceptionally on May 1st.*

*From 01/10 to 31/10, daily between 9 am and 6 pm.*

*From 02/11 to 28/02, daily between 10.30 am and 4.30 pm.  
Closed exceptionally on January 1st and December 25th.  
Last entry 16h.*



## THE MARSHES OF THE VIGUEIRAT

Cabanes de l'Etourneau - 13200 Arles



### Interpretation Centre

Situated at the junction of the Camargue and the Crau, the Marais du Vigueirat are home to a remarkable biodiversity. In this vast wild space live 286 species of birds, 641 species of plants and bulls and horses, so specific to the Camargue.

☎ 04 90 98 70 91

@ visites.mdv@espaces-naturels.fr

www www.marais-vigueirat.reserves-nat  
urelles.org

### RATES (indication)

Entrée : de 2€ à 81€



## THE ROMAN AMPHITHEATRE

1 Rond-point Des Arènes - 13200 Arles



### Historic site and monument

The amphitheatre is the most important monument of the ancient Roman colony that we can admire, some two millennia after its construction. A monument that alone is worth a stay in Arles.

☎ 04 90 18 41 20

@ ot-arles@arlestourisme.com

www www.arlestourisme.com

### RATES (indication)

Free entry for children < 18 years.

Admission: from 7€ to 9€.

*From 01/03 to 30/04, daily between 9 am and 6 pm.*

*From 01/05 to 30/09, daily between 9 am and 7 pm.*

*From 01/10 to 31/10, daily between 9 am and 6 pm.*

*From 02/11 to 28/02, daily between 10.30 am and 4.30 pm.  
Last entry 16h.*



## MARCEL PAGNOL'S LITTLE WORLD

Atelier Thérèse Neveu - 4 Cour de Clastre - 13400 Aubagne



### Museum

Marcel Pagnol's Petit Monde is a heritage institution dear to the hearts of the people of Aubagne.

### RATES (indication)

Full price: 3 €

Child: 2 €.

☎ 04 42 03 49 98

@ accueil@tourisme-paysdaubagne.f  
r

www www.tourisme-paysdaubagne.fr

Pass 2 museums 5 € / per person  
3 € for children from 6 to 16 years.

*From 30/08 to 31/12/2022*

*Opening hours on Tuesday, Wednesday, Thursday, Friday and  
Saturday between 9 am and 12.30 pm and between 2 pm and  
6 pm.*

*Closed Monday and Sunday.*

*Closed exceptionally on December 25th.*

*Due to the presence of a large number of people, the site may  
be temporarily closed.*



## CHAPELLE SAINT BLAISE

13520 Les Baux-de-Provence



### Historic site and monument

### RATES (indication)

Free of charge.

☎ 04 90 49 20 02

@ message@chateau-baux-p  
com

www www.chateau-baux-prover

*From 01/01 to 28/02, daily between 10 am and 5 pm.*

*From 01/03 to 31/03, daily between 9.30 am and 6.30 pm.*

*From 01/04 to 30/06, daily between 9 am and 7 pm.*

*From 01/07 to 31/08, daily between 9 am and 7.30 pm.*

*From 01/09 to 30/09, daily between 9 am and 7 pm.*

*From 01/10 to 31/10, daily between 9.30 am and 6.30 pm.*

*From 01/11 to 31/12, daily between 10 am and 5 pm.*



## LE VILLAGE DES BAUX DE PROVENCE

13520 Les Baux-de-Provence



### Historic site and monument

### RATES (indication)

Paying

☎ 04 90 54 34 39

@ tourisme@lesbauxdeprovence.co  
m

www www.lesbauxdeprovence.com



**PORT OF CASSIS**

Quai Saint Barthélemy - 13260 Cassis

**Historic site and monument**

Nestled between the high golden cliffs of Cap Canaille and the white majesty of the Calanques, the small fishing port of Cassis symbolizes the sweetness of life in Provence.

**RATES (indication)**  
Paying

**PARC DU MUGEL**

Avenue Des Calanques - Calanque du Mugel - 13600 La Ciotat

**Park and garden**

**RATES (indication)**  
Free of charge.

☎ 04 42 08 61 32

**ABBAYE DE SAINT PONS**

Vallée de Saint Pons - 13420 Gémenos

**Historic site and monument**

**RATES (indication)**  
Free of charge.

☎ 04 13 31 50 30

*From 01/04 to 30/09, daily between 8 am and 8 pm.**From 01/10 to 31/03, daily between 9 am and 6 pm.***VILLAGE DE MIRAMAS LE VIEUX**

13140 Miramas

**Historic site and monument**

**RATES (indication)**  
Free of charge.

☎ 04 90 58 08 24

@ ot.miramas@free.fr

**SILVACANE ABBEY**

D 561a - Avenue Silvacane - 13640 La Roque-d'Anthéron

**Historic site and monument**

**RATES (indication)**  
Free entry for children < 12 years.  
Group rate available for > 20 people.

☎ 04 42 50 41 69

@ abbaye@ville-laroquedantheron.fr

www www.abbaye-silvacane.com

*From 01/04 to 31/05, every Tuesday, Wednesday, Thursday,  
Friday, Saturday and Sunday.  
Closed exceptionally on May 1st.*

*From 01/06 to 30/09, daily.*

*From 01/10 to 31/03, every Tuesday, Wednesday, Thursday,  
Friday, Saturday and Sunday.  
Closed exceptionally on January 1st and December 25th.*

**CHÂTEAU D'AVIGNON**

Domaine du Château d'Avignon - Route D'Arles - 13460 Saintes-Maries-de-la-Mer

**Historic site and monument**

The Château d'Avignon in Saintes-Maries-de-la-Mer was built by the Avignon family in the 18th century. The estate consists of a landscaped park, in the middle of agricultural fields. Guided tour on the 1st Sunday of each month.

@ info.chateau.davignon@departement13.fr

www www.departement13.fr/nous-decouvrir/chateau-davignon/

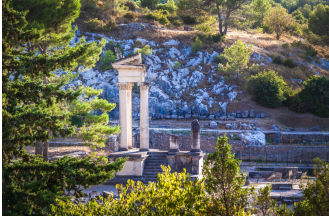
**RATES (indication)**  
Free of charge.

*From 20/04 to 02/10/2022, daily between 10 am and 6 pm.*



## ARCHAEOLOGICAL SITE OF GLANUM

Avenue Vincent Van Gogh - Route des Baux-de-Provence - 13210 Saint-Rémy-de-Provence



### Historic site and monument

More than a century of archaeological research has made it possible to present the evidence of an exceptional architectural ensemble. Located in the heart of the Alpilles massif, the Gallic city was bathed in Greek and then Roman influences.

☎ 00 33 4 90 92 23 79

@ resa.glanum@monuments-nationaux.fr

🌐 www.site-glanum.fr/

### RATES (indication)

Full price: 8 €  
Audioguide: 3 € (Available in English, French, German, Spanish)

*All year round, daily.  
Closed exceptionally on January 1st, May 1st, November 1st, November 11th and December 25th.  
1st April to 30 September: 9.45am - 6pm.  
1st October to 31 March: 10am - 5pm.  
Closed on Mondays from October to March.  
Last access 45 minutes before closing time.*



## CLOISTER OF SAINT PAUL OF MAUSOLE, VAN GOGH CULTURAL AND TOURIST CENTRE

2 Chemin Des carrières - 13210 Saint-Rémy-de-Provence



### Historic site and monument

At the foot of the Alpilles, next to the Roman ruins of GLANUM, there has been, since about the year 1000, a monastery containing a beautiful Romanesque cloister where monks of different congregations have followed one another.

☎ 00 33 4 90 92 77 00

@stpaul.cloitre@vivre-devenir.fr

🌐 saintpauldemausole.fr/

### RATES (indication)

Full price: 7 €  
Reduced price: 5 €

*All year round, daily.  
Closed exceptionally on November 1st and December 25th.  
- from 1 November 2021 to 31 March 2022: from 10.15am to 12pm and from 1pm to 5pm. (last entry at 4.30pm).  
- from 1 April to 30 September 2022: from 9.30am to 7pm (last entry at 6.30pm).*



## CASTLE OF THE EMPÉRI

Montée Du Puech - 13300 Salon-de-Provence



### Historic site and monument

Perched on the rock of the Puech, the Empéri dominates the living room. This castle was from the ninth to the eighteenth s, residence of the archbishops of Arles.

### RATES (indication)

Entrance fee: 5.1€.

☎ 04 90 44 72 80

@accueil.museeemperis@salondeprovence.org

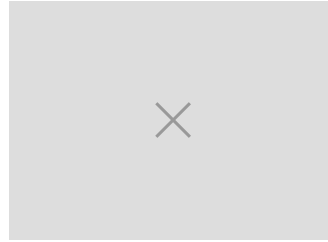
🌐 www.salondeprovence.fr/index.php/emperi



*From 01/01 to 31/12, every Tuesday, Wednesday, Thursday, Friday, Saturday and Sunday.*

## MAISON DE NOSTRADAMUS

Rue Nostradamus - 13300 Salon-de-Provence



### Museum

Discovery of the House of the famous doctor astrophile, who lived there from 1547 to 1566. The course has been set to ensure the visitor to follow the same path of initiation that was able to know Michel de Nostredame to the sixteenth century.

☎ 04 90 56 64 31

@m.nostradamus@salondeprovence.fr

🌐 www.salondeprovence.fr/index.php/nostradamus

### RATES (indication)

Entrance fee : 4.9

Entrance fee : 3.15

*From 16/04 to 30/09, every Monday, Wednesday, Thursday, Friday, Saturday and Sunday.*



*From 01/10 to 15/04, every Monday, Wednesday, Thursday, Friday, Saturday and Sunday at 7 pm.*

## CHÂTEAU DE TARASCON - RENÉ D'ANJOU ART CENTRE

Boulevard du Roi René - 13150 Tarascon



### Historic site and monument

Built in the first half of the 15th century, the castle of Tarascon is a perfect example of a fortress that combines the Gothic and Renaissance styles. Built on a rock, at the intersection of land and river routes, it links Provence to Languedoc.

☎ 04 90 91 01 93

@contact-chateau@mairie-tarascon13.fr

### RATES (indication)

Entrée : 7.5€ / Adulte

Entrée : 6.5€

Entrée : 5.5€

*From 01/01 to 31/12, every Monday, Tuesday, Wednesday, Thursday, Friday, Saturday and Sunday.  
Closed exceptionally on January 1st, May 1st and December 25th.*



## FORT SAINT NICOLAS AND FORT D'ENTRECASTEAUX

2 Boulevard Charles Livon - 13001 Marseille



### Historic site and monument

The fort is composed of the fort d'Entrecasteaux, above, and the fort Ganteaume below. Located on a strategic site at the entrance of the Old Port, this fort was built under Louis XIV to impose the royal power on the population of Marseille.

☎ 04 91 59 23 56

### RATES (indication)

Free of charge.

*From 01/01 to 31/12, daily.*

### THE OLD PORT

13001 Marseille



#### Historic site and monument

Marseille can claim to have existed for 2,600 years and therefore qualifies as France's oldest city. In 600 B.C., Greeks from Phocaea (in present-day Turkey) arrived in the Lacydon creek which was then inhabited by people belonging to the Ligurian branch of the Celts.

#### RATES (indication)

Paying

All year round, daily.

### CATHÉDRALE DE LA MAJOR

Place De la Major - 13002 Marseille



#### Historic site and monument

The new cathedral "La Major" was built by Léon Vaudoyer between 1852 and 1893 in a romano-byzantine style.

#### RATES (indication)

Free of charge.

☎ 07 72 15 60 10

@ ndmajor.cathedrale@gmail.com

🌐 notredamedelamajor.fr

From 01/04 to 30/09/2022, daily between 10 am and 6.30 pm.

### CENTER DE LA VIEILLE CHARITÉ - (CVC)

2 Rue De la Charité - 13002 Marseille



#### Historic site and monument

Located in the district of " Le Panier", this old hospice of the 17th century is composed of several wings closed on the outside and opened on a rectangular court by galleries on the three levels.

#### RATES (indication)

Free access. Free access for the permanent collections

☎ 04 91 14 58 80

🌐 culture.marseille.fr/patrimoine-culturel/la-vieille-charite%a9

From 01/01 to 31/12 between 9 am and 6 pm.  
Closed on Monday.  
Weekly closure on Mondays, except Easter and Whitsun Mondays.

Closed on the following days: January 1, May 1, November 1 and 11 and December 25.

The ticket office closes 30 minutes before the museums close.

### FORT SAINT-JEAN

Quai du Port - 13002 Marseille



#### Historic site and monument

In the 13th century, the Hospitallers of Saint John of Jerusalem set up a fortress and a commandery at the entrance to the port.

#### RATES (indication)

Free of charge.

☎ 04 84 35 13 13

🌐 www.mucem.org/

From 01/01 to 31/12 between 10 am and 7 pm.  
Closed on Tuesday.

### MUSÉE DES CIVILISATIONS D'EUROPE ET MÉDITERRANÉE

7 Promenade Robert Laffont - 13002 Marseille



#### Museum

Three sites, three different atmospheres offering rewarding and amazing proposals to be discovered on 40 000 m2: the Mucem is a true 21 century museum able to seduce with a wide range of activities.

#### RATES (indication)

Full price: 11 €  
Reduced price: 7.50 €

From 09/07 to 30/08/2022 between 10 am and 8 pm.

From 31/08 to 06/11/2022 between 10 am and 7 pm.

From 07/11 to 31/12/2022 between 10 am and 6 pm.  
Closed on Tuesday.

From 06/04 to 08/07/2023, daily between 10 am and 7 pm.

### PRÉAU DES ACCOULES

29 Montée Des Accoules - 13002 Marseille



#### Historic site and monument

#### RATES (indication)

Tarif réduit

☎ 04 91 91 52 06

🌐 musees.marseille.fr/presentation-du-preau-des-accoules

From 01/01 to 31/12, daily.



### THE OLD MARSEILLE AND THE PANIER

13002 Marseille



#### Historic site and monument

Behind the Hôtel de Ville, the historical heart of the city called "Le Panier" develops. The origin of the name comes from the sign of an inn "Le Logis du Panier", installed in the 17th century.

**RATES (indication)**  
Paying

☎ 08 10 81 38 13

*From 01/01 to 31/12, daily.*

### CORNICHE JOHN FITZERALD KENNEDY

Corniche John Fitzgerald Kennedy - 13007 Marseille



#### Historic site and monument

Begun in 1848, the work on the Corniche led in 1863 to the construction of two viaducts to cross the Auffes and Fausse-Monnaie creeks.

**RATES (indication)**  
Paying

☎ 04 91 00 00 00

*From 01/01 to 31/12, daily.*

### NOTRE-DAME DE LA GARDE

Rue Fort du Sanctuaire - 13007 Marseille



#### Historic site and monument

Notre-Dame de la Garde " La Bonne Mère ", emblematic figure of the city, watches over the sailors, the fishermen and all the inhabitants of Marseilles.

**RATES (indication)**  
Free of charge.

☎ 04 91 13 40 80

@ recteurnotredamedelagarde@gmail.com

www www.notredamedelagarde.com

*From 01/05 to 31/12, every Monday, Tuesday, Wednesday, Thursday, Friday, Saturday and Sunday between 7 am and 6 pm.  
7am opening, 6pm closing of the crypt, the basilica, and the terraces, 6:15pm closing of the parking lots.*



### PALAIS DU PHARO

58 Boulevard Charles Livon - 13007 Marseille



#### Historic site and monument

**RATES (indication)**  
Free of charge.

☎ 04 91 55 15 75

www palaisdupharo.marseille.fr

*From 04/01 to 31/12, daily.*

### THE IF CASTLE

Archipel du Frioul - 13007 Marseille



#### Historic site and monument

In 1516, François I, King of France, stopped in Marseille after the victory of Marignan. From the island of If, he studied the city's defenses and noted that nothing protected it against invasion.

**RATES (indication)**  
Full price: 6 to 8 € (6 euros entrance fee normal rate

8 euros guided tour).

☎ 04 91 59 02 30

☎ 06 03 06 25 26

@ resa-if@monuments-nationaux.fr

www www.if.monuments-nationaux.fr

September 18 - 19, 2021: European

### LES GOUDES

Chemin des Goudes - 13008 Marseille



#### Historic site and monument

Les Goudes  
Located to the south-east of the city, Les Goudes is the last little "village" of Marseille before Callegongue and the succession of coastal fjords known as the "Massif des Calanques".

**RATES (indication)**  
Free access.

www mairie-marseille6-8.fr/

*All year round, daily.*





# Incoming travel agencies

## LEFRENCHTOURISM

30, avenue Gambetta - 26260 Saint-Donat-sur-l'Herbasse



### Services

Based in the heart of the Drôme for more than 70 years, we are the specialist for all your stays, tours and itineraries within the Drôme and Auvergne Rhône-Alpes region, for unique and exclusive experiences.

### RATES (indication)

Sur demande selon le voyage.

☎ 04 75 42 86 00

@ contact@lefrenchtourism.com

🌐 www.lefrenchtourism.com/

## DESTINATION PROVENCE DMC

17 rue Honoré de Balzac - 26000 Valence



### Services

Destination Provence, incoming and events agency, is your trusted partner to design totally customized trips in the South East of France for your groups from 6 to 150 people and even much more. Our perfectly planned tours will allow travellers worldwide share and experience the passion of France.

### RATES (indication)

Free quote and 100% customizable.

☎ 06 82 06 56 52

☎ 06 87 86 21 74

@ info@destination-provence.fr

🌐 www.destination-provence.fr

*From 01/01 to 31/12.*

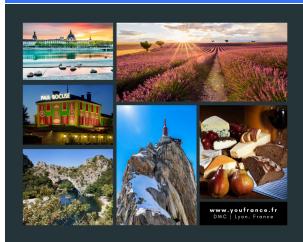
*Closed on Sunday.*

*Closed exceptionally on January 1st, May 1st, May 8th, July 14th, August 15th, November 1st, November 11th and December 25th.*

*All year round.*

## YOUFRANCE BY ANDARELA-TRAVEL

1104 route de Lyon - 38540 Valencin



Destination Management Company specializing in the Auvergne-Rhône-Alpes region: self-drive and guided tours for individuals and small groups.

### RATES (indication)

Paying

☎ +33(0) 682 816 073

@ contact@youfrance.fr

🌐 www.youfrance.fr

## PHILIBERT TRAVEL & EVENTS

PHILIBERT - BP 15 - 69300 Caluire-et-Cuire



### Services

Incoming DMC agency specialized in leisure and business tourism in Lyon, its region and throughout France. Philibert relies on its multilingual staff to help you adapt your tailor-made programs for the organization of customized journeys, visits and excursions, meetings & incentives.

### RATES (indication)

Paying

☎ 04 78 98 56 00

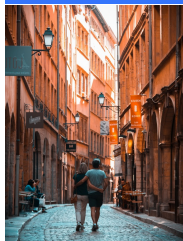
🌐 philibert-travel.fr/en/

*All year round, every Monday, Tuesday, Wednesday, Thursday and Friday between 9 am and 6 pm.*

*Closed exceptionally on January 1st, Easter Monday, Feast of the Ascension, Whit Monday, May 1st, May 8th, July 14th, August 15th, November 1st, November 11th and December 25th.*

## TRIP MY FRANCE

70 Place François Denoyer - 69640 Lachenas



### Services

Trip My France invites you into the world of personalized and customized travel. Whether you are a solo traveler, a couple, a group, a travel agency, ... we take the time to understand your priorities and expectations.

### RATES (indication)

Paying

☎ 06 77 86 67 72

@ laetitia@trip-my-france.com

🌐 www.trip-my-france.com

## EXCELYS TOURS

Galerie du Sofitel - 47 rue Sala - 69002 Lyon 2ème



### Services

Looking for enjoyment, discovery and new experiences? We propose a selection of high-end breaks to discover the treasures of the Rhône-Alpes and France in the best possible conditions.

### RATES (indication)

Tarifs sur demande pour les programmes sur mesure. Tarifs consultables pour nos offres packagées, selon la destination et le nombre de voyageurs.

☎ 06 32 10 74 98

☎ 04 78 92 47 75

@ france@excelystours.fr

🌐 www.excelystours.fr

*From 01/02 to 30/12  
Opening hours on Monday, Tuesday, Wednesday, Thursday and Friday between 9.30 am and 1 pm and between 2 pm and 5 pm.*

*Mon, Tue, Wed and Fri 9 am-5.30 pm.*

# Accommodation Provence

## AQUABELLA HÔTEL & SPA

2 Rue Des Etuves - 13090 Aix-en-Provence

★★★★



### Hotel - restaurant

The hotel is right in full heart of the old Aix-en-Provence, at the feet of the old city, Sextius thermal baths and the Fitness center. medieval fortifications.

#### RATES (indication)

Double room: 119 to 359 €.

**112 rooms, 220 people**

@ info-aquabella@partouche.com

www.aquabella.fr

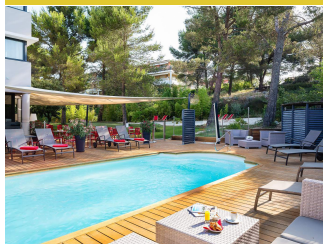


All year round.

## BEST WESTERN PLUS HÔTEL DE L'ARBOIS

97 Rue Du Docteur Albert Aynaud - Parc de la Duranne - 13090 Aix-en-Provence

★★★★



### Hotel - restaurant

#### RATES (indication)

Double room: 85 to 290 €  
Supplementary payment for pets: 15 €.

**56 rooms, 120 people**

@ 04 42 58 59 60

@ bestwestern@hotelarbois.fr

www.bestwestern.fr/fr/hotel-Aix-En-Provence-Best-Western-Hotel-de-l-Arbois-93652



All year round.

## CHÂTEAU DE LA GAUDE

3959 Route des Pinchinats - 13090 Aix-en-Provence

★★★★★



### Hotel - restaurant

#### RATES (indication)

Double room: 290 to 1,100 €.

**14 rooms, 34 people**

@ 04 84 93 09 30

@ contact@chateaudelagaude.com

chateaudelagaude.com/

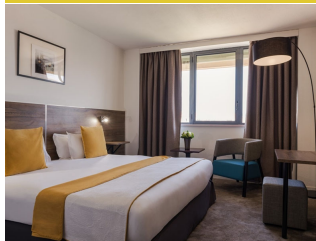


All year round.

## BEST WESTERN LE GALICE

5-7 Route De Galice - 13090 Aix-en-Provence

★★★★



### Hotel - restaurant

#### RATES (indication)

Single room: 110 €.

**90 rooms, 180 people**

@ 04 42 52 75 27

@ hotelgalice@bestwestern-aix.com

www.hotelgalice-aix.com/fr/



All year round.  
Reception desk daily open 24/24h.

## BOUTIQUE HÔTEL CÉZANNE

40 Avenue Victor Hugo - 13090 Aix-en-Provence

★★★★



### Hotel

A former family home transformed into a hotel in 1961, Le Cézanne is an integral part of the city's history.

#### RATES (indication)

Double room: 120 to 450 € (per night).

**55 rooms, 117 people**

@ 04 42 91 11 11

@ boutiquehotelcezanne@hotelaix.com

boutiquehotelcezanne.com/



All year round.

## GOLDEN TULIP AIX-EN-PROVENCE

42 Route de Galice - 13090 Aix-en-Provence

★★★★



### Hotel - restaurant

#### RATES (indication)

Double room: 89 to 400 €.

**83 rooms, 166 people**

@ 04 42 95 04 41

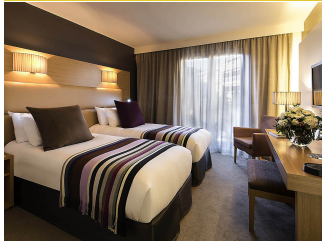
@ info@goldentulipaixenprovence.com

aix-en-provence.goldentulip.com



All year round.

**GRAND HOTEL ROI RENÉ AIX EN PROVENCE - MGALLERY** ★★★★★  
24 Boulevard Du Roi René - 13090 Aix-en-Provence



**Hotel - restaurant**  
A stone's throw from the Cours Mirabeau and the historic center of Aix-en-Provence, the Grand Hôtel Roi René is the ideal place for your getaway in the city of Aix and the surrounding area.

**RATES (indication)**  
Double room: from 140 €.

- 134 rooms, 268 people**
- ☎ 04 42 37 61 00
- @ h1169@accor.com
- 🌐 www.sofitel.com/fr/hotel-1169-grand-hotel-roi-rene-aix-en-provence-centre-mgallery-by-sofitel/index.shtml



All year round.

**HÔTEL BIRDY BY HAPPYCULTURE** ★★★★★  
775 Rue Jean René Guillibert Gauthier de la Lauzière - 13090 Aix-en-Provence



**Hotel - restaurant**  
**RATES (indication)**  
From 01/06 to 30/11/2021  
Double room: 100 to 300 €  
Single room: 90 to 300 €

- 95 rooms, 190 people**
- ☎ 04 42 97 76 00
- @ bonjour@hotel-birdy.com
- 🌐 www.hotel-birdy.com/

From 01/12/2021 to 28/02/2022  
Double room: 80 to 250 €  
Single room: 70 to 250 €.



All year round.

**HÔTEL LE PIGONNET** ★★★★★  
5 Avenue Du Pignonnet - 13090 Aix-en-Provence



**Hotel - restaurant**  
Le Pignonnet is a delightful upmarket hotel a step or two away from the centre of Aix-en-Provence.

**RATES (indication)**  
Double room: 280 to 580 €.

- 45 rooms, 65 people**
- ☎ 04 42 59 02 90
- @ reservation@hotelpignonnet.com
- 🌐 www.hotelpignonnet.com



From 03/02 to 31/12/2022.  
Annual closing from 2022, January 2nd to February 3rd.

**HÔTEL ROTONDE** ★★★★★  
15 Avenue Des Belges - 13090 Aix-en-Provence



**Hotel**  
**RATES (indication)**  
Double room: 90 to 199 € (per night).

- 41 rooms, 82 people**
- ☎ 04 42 26 29 88
- @ mail@hotel-ronde.com
- 🌐 www.hotel-ronde.com



All year round.

**LE MAS D'ENTREMONT** ★★★★★  
315 RN 7 - Montée d'Avignon - Célony - 13090 Aix-en-Provence



**Hotel - restaurant**  
**RATES (indication)**  
Double room: 115 to 360 €.

- 20 rooms, 44 people**
- ☎ 04 42 17 42 42
- @ entremont@masdentremont.com
- 🌐 www.masdentremont.com



From 01/01 to 31/12/2022.  
Closed from 2022, January 3rd to 21st.

**NEGRECOSTE HOTEL & SPA** ★★★★★  
33 Cours Mirabeau - 13090 Aix-en-Provence



**Hotel - restaurant**  
**RATES (indication)**  
Double room: 129 to 349 €.

- 35 rooms, 72 people**
- ☎ 04 42 27 74 22
- @ contact@hotelnegrecoste.com
- 🌐 hotelnegrecoste.com/



All year round.



**NOVOTEL AIX BEAUMANOIR** ★★★★★

8 Rue Marcel Arnaud - 13090 Aix-en-Provence

**Hotel - restaurant****RATES (indication)**

Double room: 89 to 149 € (per night).

**102 rooms, 332 people**

☎ 04 42 91 15 15

@ h0393@accor.com

🌐 www.all.accor.com

*All year round.***RENAISSANCE AIX-EN-PROVENCE HÔTEL** ★★★★★

320 Avenue Wolfgang Amadeus Mozart - 13090 Aix-en-Provence

**Hotel - restaurant****RATES (indication)**Double room: 165 to 400 €  
Double room with breakfast: 185 to 420 €  
Family room: 180 to 425 €.**133 rooms, 300 people**

☎ 04 86 91 55 00

@ reservation@renaissance-aix.com

🌐 www.renaissanceaixenprovencehoteltel.com

*All year round.***VILLA SAINT-ANGE** ★★★★★

7 Traverse Saint-Pierre - 13090 Aix-en-Provence

**Hotel - restaurant****RATES (indication)**

Double room: from 310 €.

**34 rooms, 68 people**

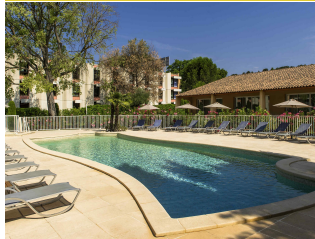
☎ 04 42 95 10 10

@ reservation@villasaintange.com

🌐 www.villasaintange.com

*From 10/02 to 31/12.  
Closed from 2022, January 2nd to February 9th.***NOVOTEL AIX-EN-PROVENCE PONT DE L'ARC FENOUILLERES** ★★★★★

Avenue Arc de Meyran - 13090 Aix-en-Provence

**Hotel - restaurant****RATES (indication)**

Chambre double : de 89€ à 149€ (Nuitée)

**80 rooms, 264 people**

☎ 04 42 16 09 09

@ h0394-fo@accor.com

*All year round.***VILLA GALLICI** ★★★★★

18 Avenue De la Violette - 13090 Aix-en-Provence

**Hotel - restaurant****RATES (indication)**Double room: 315 to 1,025 €  
Suite: 595 to 1,950 €.**23 rooms, 46 people**

☎ 04 42 23 29 23

@ reservation@villagallici.com

🌐 www.villagallici.com

*From 01/02 to 31/12.  
Closed from December 19th to 27th and  
from 2022, January 2nd to February 3rd.***ARLES PLAZA** ★★★★★

45 Avenue Sadi Carnot - 13200 Arles

**Hotel**

The Hotel Arles Plaza combines originality, design and comfort: a large reception hall with the reception, a heated swimming pool, its jacuzzi, its hammam, covered winter garden, a bar and a dining room for breakfast and group dinners.

**67 rooms, 160 people**

☎ 04 90 99 40 40

@ contact.hotel@arlesplaza.com

🌐 www.hotelarlesplaza.com

**RATES (indication)**Double room: 79 to 164 €  
Double room with breakfast: 91 to 176 €  
Twin room: 79 to 164 €  
Single room: 79 to 164 €*From 01/04 to 31/10/2022.*

**JULES CÉSAR**

9 Boulevard Des Lices - 13200 Arles

★★★★★

**Hotel - restaurant****RATES (indication)**Chambre double : de 129€ à 869€  
(Nuitée)

Petit-déjeuner : 23€

**130 people**

☎ 04 90 52 52 52

@ h9736@accor.com

🌐 www.hotel-julescesar.fr



From 01/01 to 31/12/2022.

**MAISON VOLVER**

8 Rue Le la Cavalerie - 13200 Arles

★★★★

**Hotel - restaurant**

Warmth and conviviality, this place like no other resembles above all the hostess who conceived it as an immobile journey

**RATES (indication)**Double room: 79 €  
Double room with breakfast: 111 €  
Twin room: 119 €  
Single room: 74 €  
Triple room: 179 €  
Room sleeping 4: 199 €  
Suite: 199 €  
Formule télétravail: 119 €  
Breakfast: 7.50 €**16 rooms, 37 people**

☎ 04 90 96 05 88

☎ 06 03 21 25 11

@ contact@maisonvolver.com

🌐 www.maisonvolver.com



From 01/01 to 31/12/2022.

**MAS DE PEINT**

Le Sambuc - En Camargue - 13200 Arles

★★★★★

**Hotel - restaurant**

This elegant 17th century mansion is a subtle balance between generosity, the love of a guesthouse and a charming hotel

**RATES (indication)**Double room: 270 to 760 €  
Double room with breakfast: 314 to 804 €  
Twin room: 315 to 710 €  
Single room: 270 to 760 €  
Triple room: 350 to 760 €  
Chambre familiale: 515 to 760 €  
Suite: 460 to 760 €  
Breakfast: 12 to 22 €**15 rooms, 30 people**

☎ 04 90 97 20 62

@ contact@masdepeint.com

🌐 www.masdepeint.com



From 08/04 to 02/11/2022.

**PARTICULIER**

4 Rue De la Monnaie - 13200 Arles

★★★★★

**Hotel - restaurant****RATES (indication)**Chambre double : de 369€ à 509€  
(Nuitée)

Petit-déjeuner : 26€

**10 rooms, 20 people**

☎ 04 90 52 51 40

@ contact@hotel-particulier.com

🌐 www.hotel-particulier.com



From 15/03 to 01/11/2022.

**RODIN**

20 Rue Auguste Rodin - 13200 Arles

★★★★★

**Hotel**

Here we cultivate the art of welcoming you as at home, while respecting our environment.

**RATES (indication)**Double room: 65 to 310 €  
Double room with breakfast: 65 to 310 €  
Single room: 65 to 310 €  
Triple room: 80 to 350 €  
Room sleeping 4: 95 to 350 €  
Chambre familiale: 95 to 350 €  
Suite: 95 to 350 €  
Half-board: 20 to 25 €  
Breakfast: 6 to 15 €**28 rooms, 83 people**

☎ 04 90 49 69 10

@ contact@hotel-lerodin.fr

🌐 www.hotel-lerodin.fr



From 01/04 to 30/09/2022.

**SOWELL HÔTELS L'OLIVIER**

Le Village Camarguais - Mas de Véran - Quartier Fourchon - 13200 Arles

★★★★★

**Hotel - restaurant****RATES (indication)**Double room: 75 to 235 €  
Half-board: 110 to 270 €  
Full-board: 175 to 335 €  
Breakfast: 12 €  
Supplementary payment for pets: 10 €  
Tourist taxes: 2.53 €.**52 rooms**

☎ 04 90 18 49 49

@ arles@sowell.fr

🌐 www.sowell.fr/hotel/olivier/

Tax not included.



From 01/03 to 30/11/2022.

**AUBERGE LA BENVENGUDO** ★★★★★

Route d'Arles - Vallon de l'Arcoule - 13520 Les Baux-de-Provence

**Hotel - restaurant****RATES (indication)**

From 16/12/2021 to 02/01/2022  
 Double room: from 145 €  
 Suite: from 175 €  
 Breakfast: 22 €  
 Tourist taxes: 2.53 €.

From 26/03 to 13/11/2022  
 Double room: from 145 €  
 Suite: from 175 €  
 Breakfast: 22 €  
 Tourist taxes: 2.53 €.

**28 rooms, 74 people**

☎ 04 90 54 32 54

@ reservations@benvengudo.com

🌐 www.benvengudo.fr

*From 26/03 to 13/11, daily.**From 16/12 to 02/01, daily.***DOMAINE DE MANVILLE** ★★★★★

Route de la Terre des Baux - 13520 Les Baux-de-Provence

**Hotel - restaurant****RATES (indication)**

Double room: 289 to 555 €  
 Suite: 405 to 1,290 €  
 Breakfast: 28 €  
 Supplementary payment for pets:  
 15 €  
 Tourist taxes: 3.30 €.

**30 rooms, 72 people**

☎ 04 90 54 40 20

@ contact@domainedemanville.fr

🌐 www.domainedemanville.fr

*All year round.***MAS DE L'OULIVIE** ★★★★★

Route d'Arles - 13520 Les Baux-de-Provence

**Hotel****RATES (indication)**

Double room: 157 to 495 €  
 Suite: 425 to 745 €  
 Breakfast: 22 €  
 Supplementary payment for pets:  
 25 €  
 Tourist taxes: 2.53 €.

Tax not included.

**27 rooms, 54 people**

☎ 04 90 54 35 78

@ contact@masdeloulivie.com

🌐 www.masdeloulivie.com

*From 26/03 to 12/11.***OUSTAU DE BAUMANIÈRE** ★★★★★

Mas Baumanière - Route d'Arles - 13520 Les Baux-de-Provence

**Hotel - restaurant****RATES (indication)**

Double room: 240 to 686 €  
 Suite: 360 to 1,350 €  
 Breakfast: 30 €  
 Supplementary payment for pets:  
 30 €  
 Tourist taxes: 3.30 €.

**53 rooms, 105 people**

☎ 04 90 54 33 07

@ contact@baumaniere.com

🌐 www.baumaniere.com

Tax not included.

*From 01/01 to 31/12.***LA BASTIDE DE BOULBON** ★★★★★

1 chemin de la Lône - 13150 Boulbon

**Hotel**

Boulbon is a small Provençal village that is home to a lovely small jewel of a hotel. At the foot of the range of hills, this Bastide from 1850 has been beautifully renovated into a charming hotel with a personal, warm welcome. A discreet, personalised venue that guarantees you an exceptional stay!

**RATES (indication)**

Double room: 180 to 260 €  
 Suite: 225 to 260 €  
 Breakfast: 14 to 19 €.

**8 rooms, 25 people**

☎ +33 (0)4 90 93 11 11

☎ +33 (0)6 11 68 44 54

@ contact@labastidedeboulbon.com

🌐 www.labastidedeboulbon.com

*From 01/04 to 05/10/2022.***HÔTEL SEA AND SPA LES ROCHES BLANCHES** ★★★★★

9 Route Des Calanques - 13260 Cassis

**Hotel - restaurant****RATES (indication)**

Paying

**36 rooms**

☎ 04 42 01 09 30

@ hotel@hotelrbc.com

🌐 www.roches-blanches-cassis.com

*From 01/04 to 09/01.*



**MERCURE AIX EN PROVENCE SAINTE VICTOIRE**

★★★★

RN 7 - 13790 Châteauneuf-le-Rouge

**Hotel - restaurant****RATES (indication)**

Double room: from 102 €.

**61 rooms, 142 people**

☎ 04 42 20 21 51

@ h7019@accor.com

🌐 www.hotelmercureaixsaintevictoire.fr



All year round.

**LA BASTIDE D'EYGALIÈRES**

★★★★

765 Chemin De Pestelade - Route d'Orgon. Le Braou - 13810 Eygalières

**Hotel - restaurant**

In the heart of the Alpilles, between scrubland and olive groves, La Bastide d'Eygalières awaits you.

**RATES (indication)**

Double room: 90 to 243 €  
 Chambre familiale: 110 to 293 €  
 Suite: 120 to 272 €  
 Half-board: 44 to 47.50 € (Only in high season)  
 Breakfast: 15 to 17.50 €.

**15 rooms, 37 people**

☎ 00 33 4 90 95 90 06

@ contact@hotellabastide.com

🌐 www.hotellabastide.com



Tourist tax included.

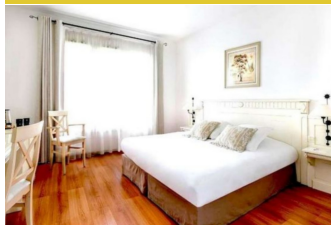


All year round.

**HÔTEL MOUNT VENTÛRI**

★★★★

RD 6 - Quartier château l'Arc - 13710 Fuveau

**Hotel - restaurant****RATES (indication)**

Tax not included.

**81 rooms, 198 people**

☎ 04 42 68 19 19

@ dir.aix@wikimail.fr

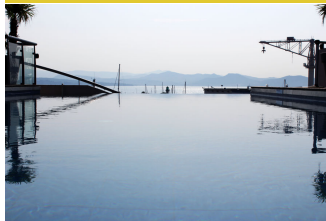


All year round, every Monday, Tuesday,  
 Wednesday, Thursday, Friday, Saturday and  
 Sunday.

**BEST WESTERN PREMIER VIEUX PORT HOTEL**

★★★★

252 Quai François Mitterrand - 13600 La Ciotat

**Hotel**

Just a few minutes from the beach and the Calanques du Mugel and Figuerolles, in the heart of the port of La Ciotat and a stone's throw from the city centre, the Best Western Premier Vieux Port combines its exceptional location with one of the most beautiful bays in the world..

**63 rooms, 126 people**

☎ +33 4 42 04 00 00

@ contact@bestwestern-laciotat.com

🌐 www.bestwestern-laciotat.com

**RATES (indication)**

Group rate available for &gt; 10 people.

Single and double room: from 99€



All year round.

**LA RÉGALIDO**

★★★★

118 Avenue Frédéric Mistral - 13990 Fontvieille

**Hotel - restaurant**

At La Régalido, there's a nice smell, it smells like holiday... Our 4-star hotel in Fontvieille is a big house of character, nestled in the village of Alphonse Daudet.

**RATES (indication)**

Double room: 99 to 309 €  
 Suite: 219 to 399 €  
 Half-board: 90 €  
 Breakfast: 18 €  
 Supplementary payment for pets: 20 €.

**15 rooms, 36 people**

☎ 00 33 4 90 54 60 22

@ contact@villa-regalido.com

🌐 www.villa-regalido.com/



All year round.

**RELAIS DE LA MAGDELEINE**

★★★★

40 avenue du 2eme Cuirassier - 2 Rond-point des Charrons - 13420 Gémenos

**Hotel - restaurant****RATES (indication)**

Basse saison : entre 150 à 360€ (hors petit déjeuner)

Haute saison : de 190 à 380€.

**28 rooms, 58 people**

☎ 04 42 32 20 16

@ contact@relais-magdeleine.com

🌐 www.relais-magdeleine.com



All year round.

**LE MOULIN DE VERNÈGUES**

★★★★

Domaine de Pont Royal - 13370 Mallemort

**Hotel - restaurant**

This magnificent 13th century bastide is located in the peace and greenery of a 7 hectare park. It houses 100 refined rooms, as well as the Spa la Bergerie By Sothys for a moment of relaxation.

**100 rooms, 200 people**

☎ 04 90 59 12 00

@ info@moulindevernegues.com

🌐 www.moulindevernegues.com

**RATES (indication)**

Chambre double : de 119€ à 390€ (Nuitée) / Adulte

Petit-déjeuner : 18€

Taxe de séjour : 2.5€



From 01/03 to 31/12/2022.

**GOLDEN TULIP MARTIGUES PROVENCE**

★★★★

12 avenue José Nobre - 13500 Martigues

**Hotel - restaurant**

The Golden Tulip Martigues Provence hotel opens its doors! Recently opened, discover this new establishment for your next vacation in Martigues.

**72 rooms**

☎ 09 74 36 49 49

@ contact@goldentulipmartiguesprovence.com

🌐 martigues-provence.goldentulip.com/fr-fr/

**RATES (indication)**

Breakfast: 18 €

10 € Supplementary payment for pets:

Tourist taxes: 2.10 €.

Tax not included.

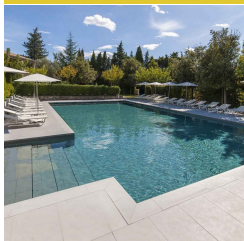


From 17/08 to 31/12/2022  
Check-out daily at 11 am.  
Check-in daily at 3 pm.

**B DESIGN & SPA**

★★★★★

1 Chemin de l'ancienne voie ferrée - 13520 Paradou

**Hotel - restaurant**

The hotel b design & spa, located at the base of Les Baux-de-Provence, offers a new 5\* concept in Paradou, in the heart of the Alpilles Regional Park. The 15 contemporary suites are a concentrate of great comfort, space and design...

**15 rooms, 30 people**

☎ 00 33 4 90 54 58 66

@ reservation@hotelbdesign.fr

🌐 www.hotelbdesign.fr/en/

**RATES (indication)**

Double room: 245 to 305 €

Suite: 490 to 690 €

Breakfast: 25 €.

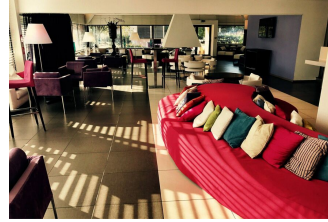


All year round.

**MARSEILLE INTERNATIONAL AIRPORT HÔTEL**

★★★★

Aéroport Marseille Provence - 13700 Marignane

**Hotel - restaurant****RATES (indication)**

A partir de 140 € pour un adulte.

**178 rooms, 376 people**

☎ 04 42 78 42 78

@ hotel@mia-marseille.com



All year round.

**AUBERGE DE NOVES**

★★★★

Domaine du Devés - Route De Chateaurenard - D 28 - 13550 Noves

**Hotel - restaurant****RATES (indication)**

Chambre double : de 165€ à 490€ (Nuitée) / Adulte

Petit-déjeuner : 22€

Demi-pension : de 355€ à 680€ (Nuitée) / Adulte.

**23 rooms, 55 people**

☎ 04 90 24 28 28

@ resa@aubergedenovés.com

🌐 www.aubergedenovés.com



All year round.

**DU CÔTÉ DES OLIVADES**

★★★★

1 Chemin de l'ancienne voie ferrée - 13520 Paradou

**Hotel - restaurant****RATES (indication)**

Double room: 195 to 245 €

Suite: 290 to 345 €

Breakfast: 25 €.

**10 rooms, 22 people**

☎ 00 33 4 90 54 56 78

@ reservation@ducotedesolivades.com

🌐 www.ducotedesolivades.com/en

Tax not included.



All year round.

**HÔTEL CHÂTEAU DE FONSCOLOMBE** ★★★★★  
Route de Saint Canadet - CD13 - 13610 Le Puy-Sainte-Réparate



**Hotel - restaurant**

**RATES (indication)**  
Double room: 205 to 505 €  
Chambre familiale: 545 to 665 €  
Suite: 585 to 705 €.

**50 rooms, 106 people**

- ☎ 04 42 21 13 13
- @ contact@fonscolombe.fr
- 🌐 fonscolombe.fr/



*From 01/04 to 31/10/2022.*

**VILLA LA COSTE** ★★★★★  
2750 Route De La Cride - 13610 Le Puy-Sainte-Réparate



**Hotel - restaurant**

**RATES (indication)**  
Double room: 650 to 1,200 €.

**28 rooms, 62 people**

- ☎ 04 42 50 50 00
- @ contact@villalacoste.com
- 🌐 www.villalacoste.com



*All year round.*

**VILLA BAULIEU** ★★★★★  
Domaine de Beaulieu - Route de Beaulieu - CD 14C - 13840 Rognes



**Hotel - restaurant**

**RATES (indication)**  
Double room: 330 to 650 €  
Suite: 650 to 860 €  
Price per room: 1,100 to 1,390 €.

**11 rooms, 24 people**

- ☎ 04 42 60 39 40
- @ contact@villabaulieu.com
- 🌐 www.villabaulieu.com



*From 25/03 to 01/11/2022.*

**AUBERGE CAVALIÈRE** ★★★★★  
RD 570 - Route d'Arles - 13460 Saintes-Maries-de-la-Mer



**Hotel - restaurant**

**RATES (indication)**  
De 175€ à 345€ (la nuitée)

21€ le petit déjeuner

De 45€ à 60€ le repas.

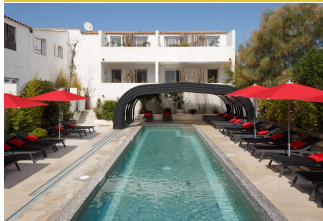
**69 rooms**

- ☎ 04 90 97 88 88
- @ info@aubergecavaliere.com
- 🌐 www.aubergecavaliere.com



*From 01/03 to 11/11.*

**BASTIDE BLANCHE** ★★★★★  
1bis Rue Camille Pelletan - 13460 Saintes-Maries-de-la-Mer



**Hotel - restaurant**

**RATES (indication)**  
Tax not included.

**33 rooms**

- ☎ 04 90 97 06 68
- @ contact@viladelamar.com
- 🌐 www.viladelamar.com



*From 14/02 to 03/01.*

**LE MANGIO FANGO** ★★★★★  
RD 570 - Route d'Arles - 13460 Saintes-Maries-de-la-Mer



**Hotel - restaurant**

**RATES (indication)**  
Chambre double : de 150€ à 230€ (Nuitée)

Petit-déjeuner : 23€ (Nuitée)

Prix repas : 35€ à 60€.

**23 rooms**

- ☎ 04 90 97 80 56
- @ mangio.fango@wanadoo.fr
- 🌐 www.hotelmangiofango.com



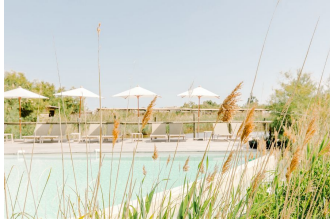
*From 25/03 to 13/11.*



**LES ARNELLES**

★★★★

RD 570 - Route d'Arles - 13460 Saintes-Maries-de-la-Mer

**Hotel - restaurant**

RATES (indication)  
Tax not included.

**17 rooms, 39 people**

☎ 04 90 97 61 59

@ reservation@lesarnelles.com

🌐 www.lesarnelles.com



From 12/02 to 11/11.

**LOU MASET COUCAGNO**

★★★★

RD 570 - Route d'Arles - 13460 Saintes-Maries-de-la-Mer

**Hotel**

RATES (indication)  
Petit-déjeuner : De 12€ à 19€  
(Nuitée).

**19 rooms, 52 people**

☎ 04 90 97 96 17

☎ 07 87 23 01 32

@ infos@mas-cocagne.com

🌐 www.mas-cocagne.com



From 04/02 to 13/11/2022.

**MAS DE LA FOUQUE**

★★★★

Route Du Petit Rhône D38 - 13460 Saintes-Maries-de-la-Mer

**Hotel**

RATES (indication)  
Tax not included.

**27 rooms**

☎ 04 90 97 81 02

@ bonjour@masdelafouque.com

🌐 www.masdelafouque.com



From 10/02 to 03/01.

**L'ESTELLE EN CAMARGUE**

★★★★★

Route Du Petit Rhône - RD38 - Lieu dit Dromar - 13460 Saintes-Maries-de-la-Mer

**Hotel - restaurant**

RATES (indication)  
Tax not included.

**20 rooms, 56 people**

☎ 04 90 97 89 01

@ reception@hotelestelle.com

🌐 www.hotelestelle.com



From 11/02 to 13/11, daily.

From 23/12 to 03/01, daily.

**MAS DE CALABRUN**

★★★★

Route de Cacharel, D85A - 13460 Saintes-Maries-de-la-Mer

**Hotel**

RATES (indication)  
Petit-déjeuner : 17€ (Nuitée)

Chambre double : de 104€ à 189€  
(Nuitée)

@ reservation@mas-de-calabrun.fr

🌐 www.mas-de-calabrun.fr



From 09/02 to 11/11.

**CHÂTEAU DE ROUSSAN**

★★★★

Route de Tarascon - 13210 Saint-Rémy-de-Provence

**Hotel - restaurant**

RATES (indication)  
Double room: 180 to 480 € (Low  
season : from 180€ to 4000€/night)

High season: from 240€ to  
480€/night)

Breakfast: 18 to 22 €.

Tax not included.

**20 rooms, 50 people**

☎ 00 33 4 90 90 79 00

@ reception@chateauderoussan.com

🌐 chateauderoussan.com/fr/



All year round.

**CHÂTEAU DES ALPILLES** ★★★★★  
1392 Route Du Rougadou - Lieu-dit le Rougadou - 13210 Saint-Rémy-de-Provence



**Hotel - restaurant**  
At the foot of the Alpilles, on the edge of Saint Rémy de Provence, nestles Le Château des Alpilles. From the moment you enter, the charm is there. After a majestic avenue of plane trees, this beautiful property extends over seven hectares of exotic and luxuriant plants.



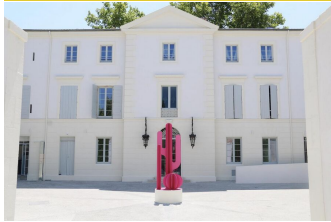
**20 rooms, 46 people**  
☎ 00 33 4 90 92 03 33  
@ contact@chateaudesalpilles.com  
🌐 www.chateaudesalpilles.com

**RATES (indication)**  
Double room: 240 to 510 € (Low season : from 240€ to 440€/night  
High season: from 310€ to



From 17/03/2022 to 03/01/2023.

**HÔTEL LE SAINT RÉMY** ★★★★★  
16 Boulevard Victor Hugo - 13210 Saint-Rémy-de-Provence



**Hotel - restaurant**  
**RATES (indication)**  
Double room: 230 to 650 € (Low season: from 230€ to 600€ / night.  
High season: from 295€ to 650€ / night)  
Breakfast: 15 to 27 € (27€/adult and 15€/child | free for children under 5).

**30 rooms, 68 people**  
☎ 00 33 4 84 51 04 51  
@ contact@lesaintremy.fr  
🌐 www.le-saint-remy.fr/en/5-star-hot-el-in-saint-remy-de-provence

Tax not included.



From 15/03 to 15/11.

**HÔTEL LE VALLON DE VALRUGUES & SPA** ★★★★★  
9 Chemin Canto Cigalo - 13210 Saint-Rémy-de-Provence



**Hotel - restaurant**  
**RATES (indication)**  
Double room: 180 to 1,350 € (Low season : from 180€ to 750€/night  
High season: from 240€ to 1350€/night)  
Half-board: from 85 €  
Breakfast: 25 €  
Supplementary payment for pets: 15 €.

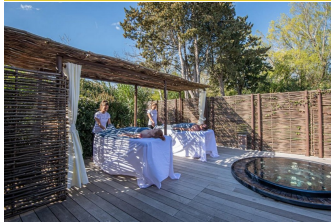
**50 rooms, 102 people**  
☎ 00 33 4 90 92 04 40  
@ resa@vallondevalrugues.com  
🌐 www.vallondevalrugues.com/en/5-star-spa-hotel-provence

Tax not included.



All year round.

**HÔTEL MAS VALENTINE** ★★★★★  
Mas Valentine - Route De Noves - 13210 Saint-Rémy-de-Provence



**Hotel - restaurant**  
**RATES (indication)**  
Chambre double : 130€ (Nuitée)  
Chambre double : 230€ (Nuitée).

**12 rooms, 30 people**  
☎ 04 90 90 14 91  
@ contact@masvalentine.com  
🌐 mas-valentine.com/



From 01/01 to 31/12.

**L'AUBERGE DE SAINT RÉMY** ★★★★★  
12 Boulevard Mirabeau - 13210 Saint-Rémy-de-Provence



**Hotel - restaurant**  
**RATES (indication)**  
Double room: 100 to 210 €  
Half-board: 330 €  
Breakfast: 15 €.

**10 rooms, 24 people**  
☎ 00 33 4 90 92 15 33  
@ contact@aubergesaintremy.com  
🌐 www.aubergesaintremy.com

Tax not included.



All year round.

**ABBAYE DE SAINTE CROIX** ★★★★★  
D16 - Route Du Val de Cuech - 13300 Salon-de-Provence



**Hotel - restaurant**  
**RATES (indication)**  
Sur la base d'une chambre pour 1 ou 2 personnes :  
Chambre double tradition basse saison : 184€ (Nuitée)  
Chambre double tradition moyenne saison : 224€ (Nuitée)  
Chambre double tradition haute saison : 289€ (Nuitée)

**25 rooms, 63 people**  
☎ 04 90 56 24 55  
@ resa-abbaye@garrigae.fr  
🌐 garrigae.fr/etablisements/abbaye-de-sainte-croix/



From 01/02 to 31/12. Closed exceptionally on December 25th.

**HÔTEL LE MAS AGELUSSI** ★★★★★

38 Chemin De Saint-Côme - 13300 Salon-de-Provence

**Hotel**

RATES (indication)  
Paying

☎ 04 90 53 49 78

@ hotelmangelussi@gmail.com



From 01/01 to 31/12.

**MAS DES COMTES DE PROVENCE** ★★★★★

651 chemin du Mas de Provence - Petite Route d'Arles - 13150 Tarascon

**Hotel**

RATES (indication)  
Twin room: 190 to 220 €  
Triple room: 260 to 290 €  
Suite: 380 to 420 €  
Breakfast: 18 €.

**11 rooms, 35 people**

☎ 04 90 91 00 13

@ contact@mas-provence.com

🌐 www.mas-provence.com



From 15/04 to 15/10/2022.

**LES LODGES SAINTE-VICTOIRE** ★★★★★

2250 Route Cézanne - 13100 Le Tholonet

**Hotel - restaurant**

RATES (indication)  
Paying

**39 rooms, 102 people**

☎ 04 42 24 80 40

@ contact@llsv.fr

🌐 www.leslodgessainte victoire.com



All year round.

**HÔTEL SAINTE VICTOIRE VAUVENARGUES** ★★★★★

33 Avenue Des Maquisards - 13126 Vauvenargues

**Hotel - restaurant**

Facing the majestic mountain Sainte-Victoire, the Hotel Sainte-Victoire offers you a breathtaking view of nature.

RATES (indication)

From 28/05 to 30/06/2021  
Double room: 229 to 349 €.

From 01/07 to 29/08/2021  
Double room: 269 to 389 €.

From 30/08 to 31/10/2021  
Double room: 189 to 309 €.

☎ 04 42 54 01 01

@ reception@hotelsainte victoire.com

🌐 www.hotelsainte victoire.com



All year round.

**HOLIDAY INN EXPRESS MARSEILLE PROVENCE AIRPORT** ★★★★★

7 Impasse Pythagore - Zi De Couperigne - 13127 Vitrolles

**Hotel - restaurant**

RATES (indication)  
Paying

**107 rooms, 234 people**

☎ 04 42 15 09 30

@ reception@goldentulipmarseilleairport.com

🌐 www.goldentulipmarseilleairport.com/fr



From 01/01 to 31/12.

**GRAND HÔTEL BEAUVAU MARSEILLE VIEUX-PORT - MGALLERY** ★★★★★

4 Rue Beauvau - 13001 Marseille

**Hotel**

RATES (indication)

Chambre double : de 111€ à 369€  
(Nuitée)

Suite : de 211€ à 499€ (Nuitée)

Petit-déjeuner : 25€ (Nuitée)

Taxe de séjour : 2.48€ (Nuitée)

☎ 04 91 54 91 00

@ h1293@accor.com

🌐 grandhotelbeauvaumarseille.com



From 01/01 to 31/12.



**MAISONS DU MONDE HÔTEL & SUITES** ★★★★★

43 Quai Des Belges - 13001 Marseille

**Hotel**

Style has no limits at Maisons du Mondes Hôtel and Suites! If you feel like an explorer, opt for the ExploChic room.

**RATES (indication)**

Chambre double : de 72€ à 253€ (Nuitée)

Chambre triple : de 99€ à 267€ (Nuitée)

Chambre double : de 114€ à 282€ (Nuitée)

**62 rooms, 124 people**

☎ 04 91 55 67 46

@ marseille@maisonsdumondehotel.com

www marseille.maisonsdumondehotel.com



From 01/01 to 31/12/2022.

**MERCURE MARSEILLE CANEBIÈRE VIEUX PORT** ★★★★★

48 La Canebière - 13001 Marseille

**Hotel - restaurant**

Sharing, simple pleasures and conviviality are values that characterize us. the Mercure Marseille Canebière Team welcomes you home for an unforgettable stay.

**RATES (indication)**

Double room: 115 to 285 €

Supplementary payment for pets: 15 €.

**186 people**

☎ 04 65 58 56 91

@ HA0D3@accor.com

www www.accor.com



From 01/01 to 31/12.

**MERCURE MARSEILLE CENTRE VIEUX PORT** ★★★★★

1 Rue Neuve Saint-Martin - 13001 Marseille

**Hotel - restaurant****RATES (indication)**

Chambre double : de 92€ à 230€ (Nuitée)

Petit-déjeuner : 19.5€ (Nuitée)

Supplément animaux : 15€ (Nuitée)

Supplément parking : 21€ (Nuitée)

Taxe de séjour : 2.48€ (Nuitée)

Chambre double : de 92€ à 230€ (Nuitée)

**200 rooms, 400 people**

☎ 04 96 17 22 22

@ h1148@accor.com

www www.mercure-marseille-centre-vieux-port.com



All year round.

**NEW HÔTEL VIEUX-PORT** ★★★★★

2 Place Gabriel Péri - 13001 Marseille

**Hotel**

Discover the New Hotel Le Quai in Marseille, fully renovated in 2018 and 2019. Enjoy its decoration inspired by the colonial era.

**RATES (indication)**

Chambre double : de 120€ à 260€ (Nuitée)

Petit-déjeuner : 14€ (Nuitée)

Taxe de séjour : 2.46€ (Nuitée)

Chambre double : de 120€ à 260€ (Nuitée)

**48 rooms, 96 people**

☎ 04 91 99 23 23

@ marseillelequai@new-hotel.com



From 01/01 to 31/12.

**BEST WESTERN PLUS LA JOLIETTE** ★★★★★

49 Avenue Robert Schuman - 13002 Marseille

**Hotel****RATES (indication)**

Chambre double : de 99€ à 259€ (Nuitée)

Petit-déjeuner : 15€ (Nuitée)

Taxe de séjour : 2.48€ (Nuitée)

**64 rooms, 124 people**

☎ 04 96 11 49 49

@ reservation@hotel-joliette.com

www www.bestwestern.fr



L'hôtel ferme jusqu'à nouvel ordre en accord avec les consignes sanitaires contre l'épidémie du coronavirus.

**GOLDEN TULIP MARSEILLE EUROMED** ★★★★★

6 Place Henri Verneuil - 13002 Marseille

**Hotel - restaurant****RATES (indication)**

Paying

**210 rooms, 435 people**

☎ 04 88 91 22 70

@ info@goldentulipmarseilleeuromed.com

www www.goldentulip.com/fr/hotels/goldentulip-marseille-centre-euromed



From 01/01 to 31/12.

**HOTEL LA RÉSIDENCE DU VIEUX PORT** ★★★★★  
18 Quai Du Port - 13002 Marseille



**Hotel**

**RATES (indication)**  
Chambre double : de 120€ à 400€ (Nuitée)

Petit-déjeuner : 18€ (Nuitée)

Taxe de séjour : 2.48€ (Nuitée)

**48 rooms, 114 people**

- ☎ 04 91 91 91 22
- @ info@hrvpm.com
- 🌐 www.hotel-residence-marseille.com



All year round.

**INTERCONTINENTAL MARSEILLE HOTEL DIEU** ★★★★★  
1 Place Daviel - 13002 Marseille



**Hotel - restaurant**

**RATES (indication)**  
Paying

**194 rooms, 400 people**

- ☎ 04 13 42 42 42
- @ marseille@ihg.com
- 🌐 www.intercontinental.com/marseille



From 01/01 to 31/12.

**NH COLLECTION MARSEILLE** ★★★★★  
37 Boulevard Des Dames - 13002 Marseille



**Hotel - restaurant**

**RATES (indication)**  
Chambre double : de 100€ à 300€ (Nuitée)

Chambre double : de 200€ à 400€ (Nuitée)

Petit-déjeuner : de 16.9€ à 21.9€ (Nuitée)

Supplément animaux : 20€ (Nuitée)

Taxe de séjour : 2.48€ (Nuitée)

**176 rooms, 352 people**

- ☎ 04 96 11 31 20
- @ nhcollectionmarseille@nh-hotels.com
- 🌐 www.nh-hotels.fr/hotel/nh-collection-marseille



From 01/01 to 31/12.

**NOVOTEL SUITES MARSEILLE CENTRE EUROMED** ★★★★★  
33 Boulevard De Dunkerque - 13002 Marseille



**Hotel**

**RATES (indication)**  
Paying

**127 rooms, 421 people**

- ☎ 04 91 01 56 50
- @ h6189@accor.com
- 🌐 www.accorhotels.com/6189



All year round.

**C2 HÔTEL** ★★★★★  
48 Rue Roux de Brignoles - 13006 Marseille



**Hotel**

**RATES (indication)**  
Double room: 169 to 539 €  
Single room: 169 to 539 €  
Triple room: 299 to 439 €  
Breakfast: 28 €  
Car park: 30 €  
Tourist taxes: 3.30 €.

**20 rooms, 44 people**

- ☎ 04 95 05 13 13
- @ contact@c2-hotel.com
- 🌐 c2-hotel.com



From 01/01 to 31/12.

**LE PETIT NICE - PASSEDAT** ★★★★★  
Anse de Maldormé - Corniche John Fitzgerald Kennedy - 13007 Marseille



**Hotel - restaurant**

**RATES (indication)**  
Paying

**16 rooms, 45 people**

- ☎ 04 91 59 25 92
- @ contact@passedat.fr
- 🌐 www.passedat.fr



From 01/01 to 31/12.

**LES BORDS DE MER** ★★★★★

52 Corniche John Fitzgerald Kennedy - 13007 Marseille

**Hotel - restaurant**

The rooms face outwards towards the sea but that's not all: the restaurant, bar, heated rooftop swimming pool, spa, fitness room and seaside café all open up onto the sea.

**19 rooms, 38 people**

☎ 04 13 94 34 00

@ contact@lesbordsdemer.com

🌐 www.lesbordsdemer.com

RATES (indication)

Paying



From 01/01 to 31/12.

**NEWHOTEL OF MARSEILLE** ★★★★★

71 Boulevard Charles Livon - 13007 Marseille

**Hotel - restaurant**

RATES (indication)

Paying

**100 rooms, 203 people**

☎ 04 91 31 53 15

@ info@newhotelofmarseille.com

🌐 www.new-hotel.com/fr/hotels-marseille/marseille



From 01/01 to 31/12.

**NOVOTEL MARSEILLE VIEUX PORT** ★★★★★

36 Boulevard Charles Livon - 13007 Marseille

**Hotel - restaurant**

RATES (indication)

Paying

**110 rooms, 220 people**

☎ 04 96 11 42 11

@ h0911@accor.com

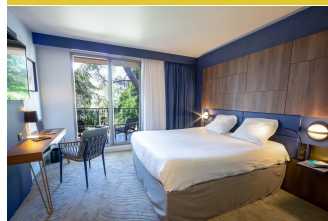
🌐 www.novotel.com



All year round.

**MERCURE MARSEILLE BOMPARD LA CORNICHE** ★★★★★

2 Rue Des Flots Bleus - 13007 Marseille

**Hotel**

RATES (indication)

Chambre double : de 160€ à 180€ (Nuitée)

Petit-déjeuner : 12€ (Nuitée)

Taxe de séjour : 2.48€ (Nuitée)

**55 rooms, 109 people**

☎ 04 91 99 22 22

@ hb5z5@accor.com

🌐 all.accor.com/hotel/B5Z5/index.fr.shtml



All year round.

**NHOW MARSEILLE** ★★★★★

200 Corniche John Fitzgerald Kennedy - 13007 Marseille

**Hotel - restaurant**

RATES (indication)

Paying

**150 rooms, 300 people**

☎ 04 91 16 19 00

@ nhpalmbeach@nh-hotels.com

🌐 www.nh-hotels.fr/hotel/nhow-marseille



From 01/01 to 31/12.

**RADISSON BLU HÔTEL MARSEILLE VIEUX PORT** ★★★★★

38-40 Quai Rive Neuve - 13007 Marseille

**Hotel - restaurant**

RATES (indication)

Paying

**189 rooms, 589 people**

☎ 04 88 44 52 00

@ groups.marseille@radissonblu.com

🌐 www.radissonblu.com/hotel-marseille



From 01/01 to 31/12.



**SOFITEL MARSEILLE VIEUX-PORT** ★★★★★

36 Boulevard Charles Livon - 13007 Marseille

**Hotel - restaurant****RATES (indication)**

Double room: 250 €  
Suite: 564 to 1,425 €  
Tourist taxes: 3.30 €.

**134 rooms, 402 people**

☎ 04 91 15 59 00

@ h0542@sofitel.com

www.sofitel-marseille-vieuxport.com



From 01/01 to 31/12.

**AC BY MARRIOTT MARSEILLE PRADO VÉLODROME** ★★★★★

4 Allée Marcel Leclerc - 13008 Marseille

**Hotel - restaurant****RATES (indication)**

Chambre double : de 129€ à 249€  
(Nuitée)

Petit-déjeuner : 19€ (Nuitée)

Supplément animaux : 15€ (Nuitée)

Supplément parking : 20€ (Nuitée)

**125 rooms, 250 people**

☎ 04 65 65 65 00

@ contact@ac-marseille.com

www.marriott.fr/hotels/travel/mrs-ar-ac-hotel-marseille/



From 01/01 to 31/12.

**GOLDEN TULIP VILLA MASSALIA** ★★★★★

17 Place Louis Bonnefon - 13008 Marseille

**Hotel - restaurant****RATES (indication)**

Paying

**140 rooms, 280 people**

☎ 04 91 72 90 00

@ info@goldentulipvillamassalia.com

villa-massalia.goldentulip.com/fr-fr/



All year round.

**MERCURE MARSEILLE CENTRE PRADO VÉLODROME** ★★★★★

11 Avenue de Mazargues - 13008 Marseille

**Hotel****RATES (indication)**

Paying

**100 rooms, 199 people**

☎ 04 96 20 37 37

@ h3004@accor.com

all.accor.com/hotel/3004/index.fr.shtml#origin=mercure



All year round.

**NOVOTEL MARSEILLE CENTRE PRADO VÉLODROME** ★★★★★

103 Avenue Du Prado - 13008 Marseille

**Hotel - restaurant****RATES (indication)**

Chambre double : de 95€ à 115€  
(Nuitée)

Suite : 135€ (Nuitée)

Petit-déjeuner : 18€ (Nuitée)

Supplément parking : 21€ (Nuitée)

Chambre double : de 95€ à 115€  
(Nuitée)

Suite : 135€ (Nuitée)

**120 rooms, 365 people**

☎ 04 91 83 10 10

@ h9013@accor.com

all.accor.com/hotel/9013/index.fr.shtml



All year round.

**NOVOTEL MARSEILLE EST** ★★★★★

184 Avenue De Saint Menet - 13011 Marseille

**Hotel - restaurant****RATES (indication)**

Paying

**77 rooms, 272 people**

☎ 04 91 43 90 60

@ h0444@accor.com

www.novotel.com



From 01/01 to 31/12.

### BEST WESTERN SEVAN PARC HÔTEL



914, Route de la Bastidonne - 84120 Pertuis



#### Hotel - restaurant

Sevan Parc Hôtel welcomes you for charming holidays at the heart of South Luberon. 4 star hotel restaurant in Pertuis. An amazing park offers peace and serenity.

#### RATES (indication)

Double room: 120 to 260 €

Single room: 110 to 185 €

Triple room: 140 to 200 €

Half-board: 37 €

Breakfast: 8 to 16 €

Supplementary payment for pets: 10 €

Tourist taxes: 2.53 €.

**48 rooms, 101 people**

☎ 04 90 79 19 30

@ contact@sevanparchotel.com

🌐 www.sevanparchotel.com



*All year round.*

## Contacts PROVENCE TOURISME :

### International

Mrs Anne-Sylvie Gautier  
[asgautier@myprovence.fr](mailto:asgautier@myprovence.fr)

### Products selection

Mr Nicolas Gueritain  
[ngueritain@myprovence.fr](mailto:ngueritain@myprovence.fr)

### Press relation

Mrs Annick Bordeyne  
[abordeyne@myprovence.fr](mailto:abordeyne@myprovence.fr)

### Social medias

Mrs Anne Marion  
[amarion@myprovence.fr](mailto:amarion@myprovence.fr)

### Project management :

Mrs Valérie Carbonne  
[vcarbonne@myprovence.fr](mailto:vcarbonne@myprovence.fr)